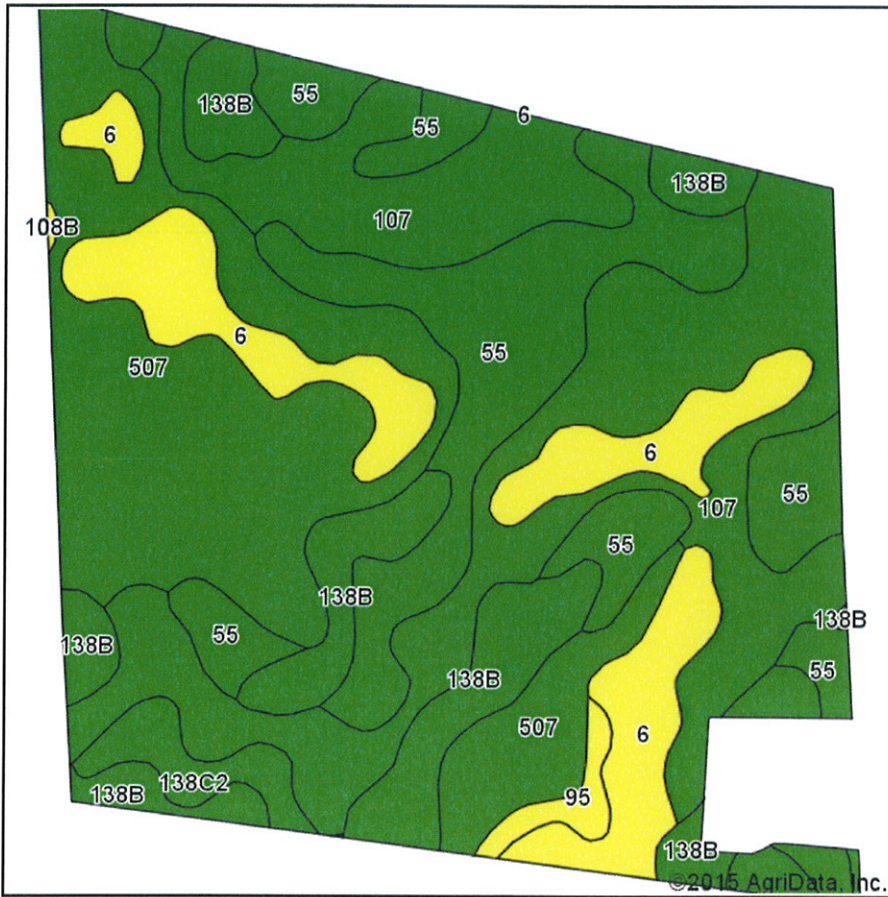
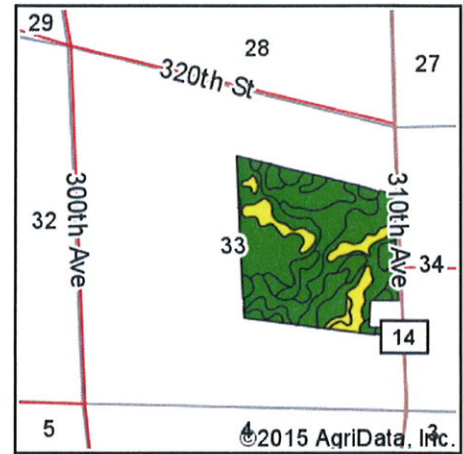


Soils Map-CSR2



Soils data provided by USDA and NRCS.



State: Iowa
 County: Clay
 Location: 33-97N-35W
 Township: Lake
 Acres: 143.35
 Date: 5/26/2015

MIDWEST LAND & REAL ESTATE, INC.
 712-262-3110 MANAGEMENT

Maps Provided By:



Area Symbol: IA041, Soil Area Version: 22

Code	Soil Description	Acres	Percent of field	CSR2 Legend	Non-Irr Class *c	CSR2**	CSR
107	Webster clay loam, 0 to 2 percent slopes	40.58	28.3%		llw	86	77
507	Canisteo clay loam, 0 to 2 percent slopes	33.77	23.6%		llw	86	73
55	Nicollet clay loam, 1 to 3 percent slopes	27.80	19.4%		lw	88	82
138B	Clarion loam, 2 to 6 percent slopes	18.69	13.0%		lle	90	74
6	Okoboji silty clay loam, depressional, 0 to 1 percent slopes	18.01	12.6%		llw	56	55
138C2	Clarion loam, 6 to 10 percent slopes, moderately eroded	2.93	2.0%		llle	83	59
95	Harps clay loam, 0 to 2 percent slopes	1.48	1.0%		llw	72	57
108B	Wadena loam, 24 to 32 inches to sand and gravel, 2 to 5 percent slopes	0.09	0.1%		lle	52	47
Weighted Average						82.9	73.3

Area Symbol: IA041, Soil Area Version: 22

*IA has updated the CSR values for each county to CSR2.

c: Using Capabilities Class Dominant Condition Aggregation Method

Soils data provided by USDA and NRCS.