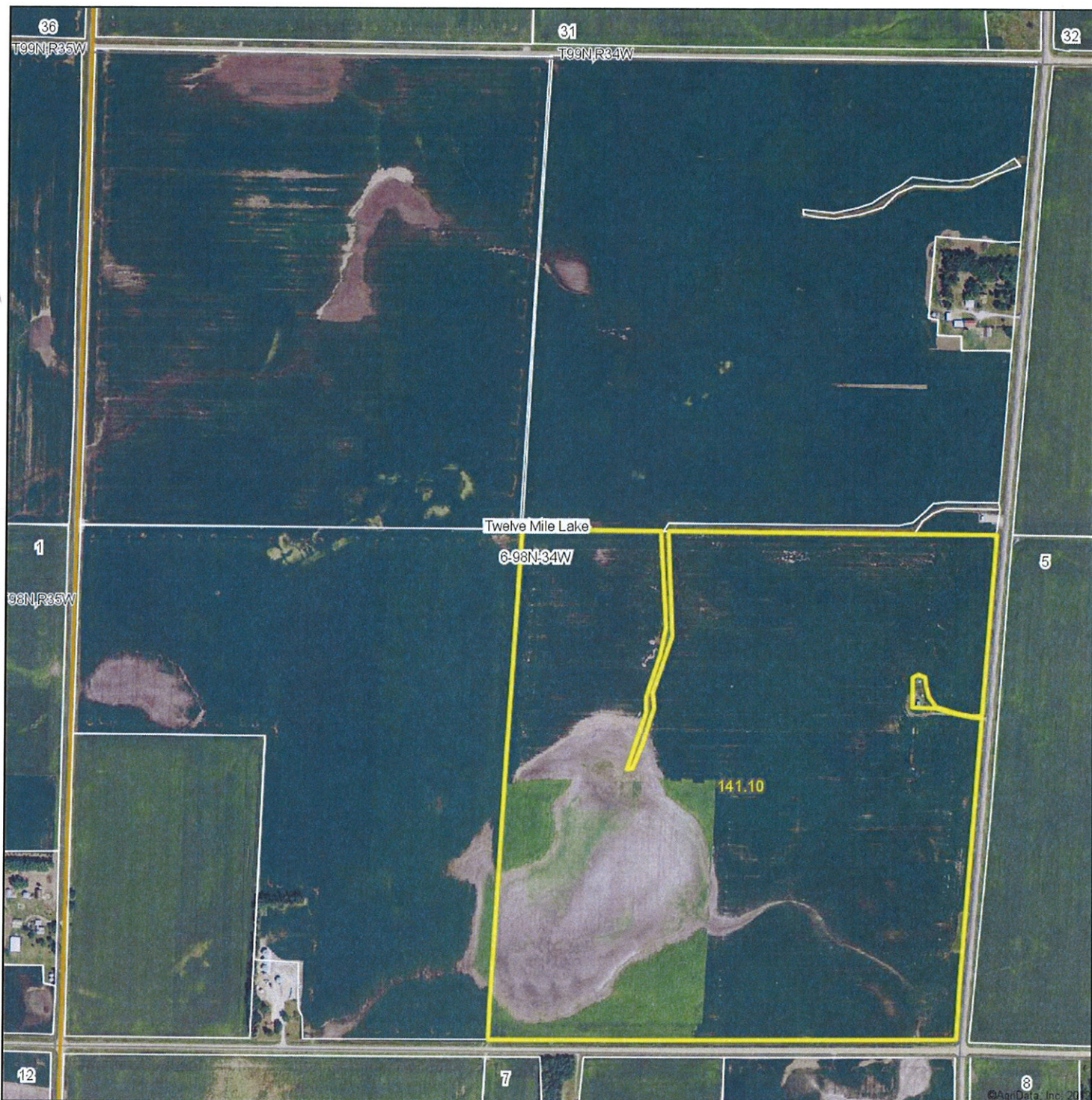


Aerial Map



MIDWEST LAND
712-262-3110 MANAGEMENT

Maps provided by:



©AgriData, Inc. 2012
www.AgrIDataInc.com

6-98N-34W
Emmet County
Iowa

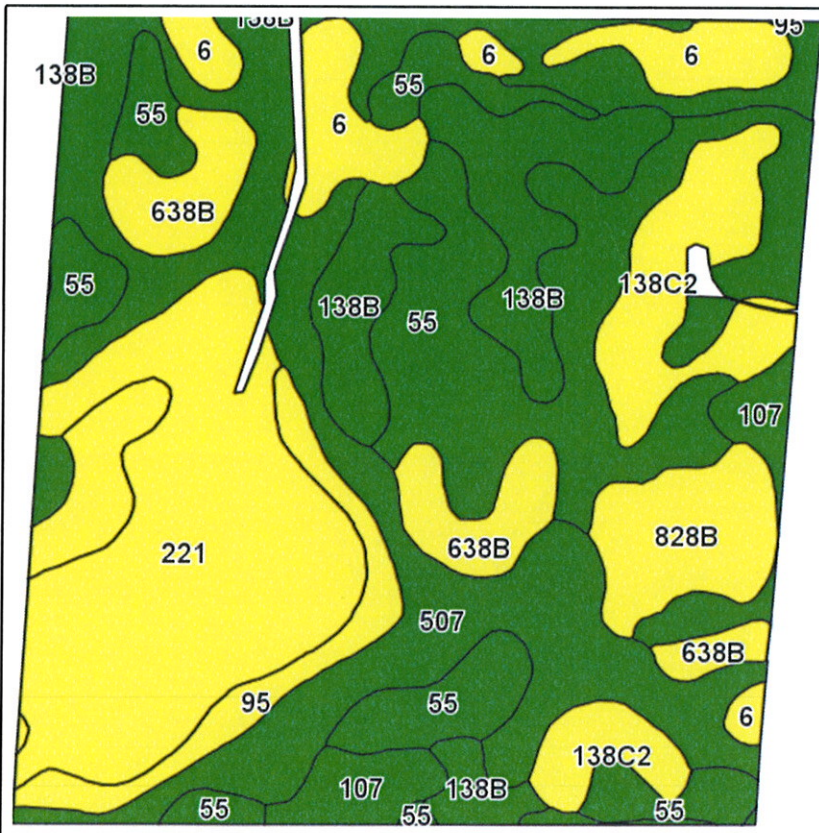
map center: 43° 20' 4.25, 94° 54' 17.54
scale: 8408



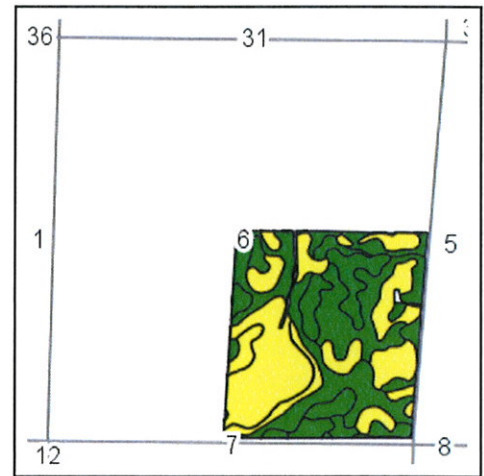
6/13/2012

Field borders provided by Farm Service Agency as of 5/21/2008. Aerial photography provided by Aerial Photography Field Office.

Soils Map



Field borders provided by Farm Service Agency as of 5/21/2008.
Soils data provided by USDA and NRCS.



State: Iowa
County: Emmet
Location: 6-98N-34W
Township: Twelve Mile Lake
Acres: 141.1
Date: 6/13/2012

REAL ESTATE, INC.
MIDWEST LAND
712-262-3110 MANAGEMENT



Maps provided by:



©AgriData, Inc 2012
www.AgriDataInc.com

Code	Soil Description	Acres	Percent of field	CSR Legend	Non-Irr Class	CSR	Corn	Soybeans
507	Canisteo clay loam, 0 to 2 percent slopes	31.6	22.4%		IIw	73	186	41
55	Nicollet loam, 1 to 3 percent slopes	30	21.3%		I	82	198	45
221	Palms muck, 0 to 1 percent slopes	23.9	16.9%		IIIw	45	148	33
138B	Clarion loam, 2 to 5 percent slopes	12.1	8.6%		IIe	74	187	42
138C2	Clarion loam, 5 to 9 percent slopes, moderately eroded	9.7	6.8%		IIIe	59	167	39
6	Okoboji silty clay loam, 0 to 1 percent slopes	8.1	5.7%		IIIw	53	159	34
95	Harps clay loam, 1 to 3 percent slopes	7.6	5.4%		IIw	57	164	36
638B	Clarion-Storden complex, 2 to 5 percent slopes	7.4	5.3%		IIe	68	179	43
828B	Zenor sandy loam, 2 to 5 percent slopes	5.8	4.1%		IIIe	45	148	26
107	Webster silty clay loam, 0 to 2 percent slopes	4.9	3.5%		IIw	77	191	42
Weighted Average						66	176.4	39.3