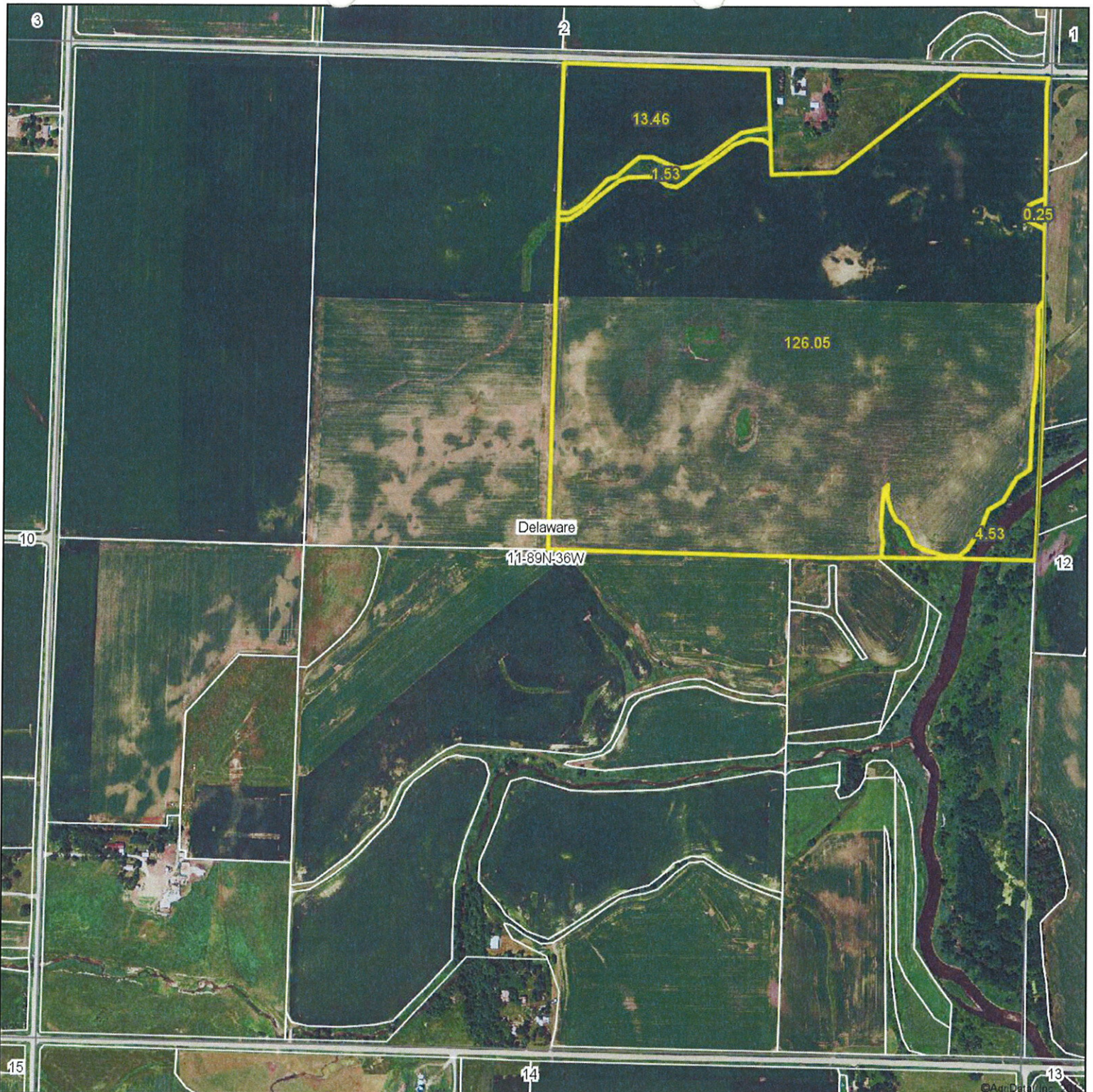


# Aerial Map



MIDWEST LAND & REAL ESTATE, INC.  
712-282-3110 MANAGEMENT

Maps provided by:  
 **surety**  
CUSTOMIZED ONLINE MAPPING

©AgriData, Inc. 2012  
www.AgriDataInc.com

**11-89N-36W**  
**Sac County**  
**Iowa**

map center: 42° 32' 23.49, 95° 3' 43.82  
scale: 8739

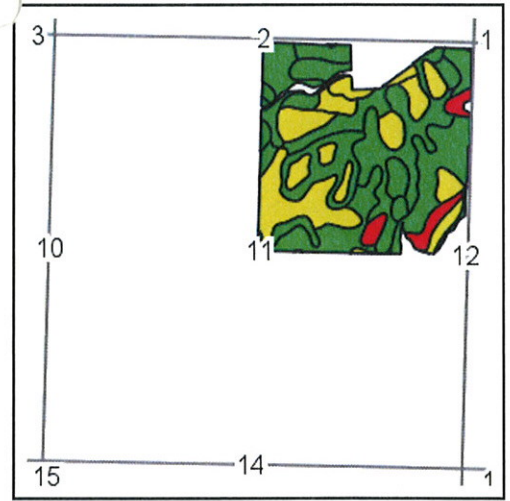
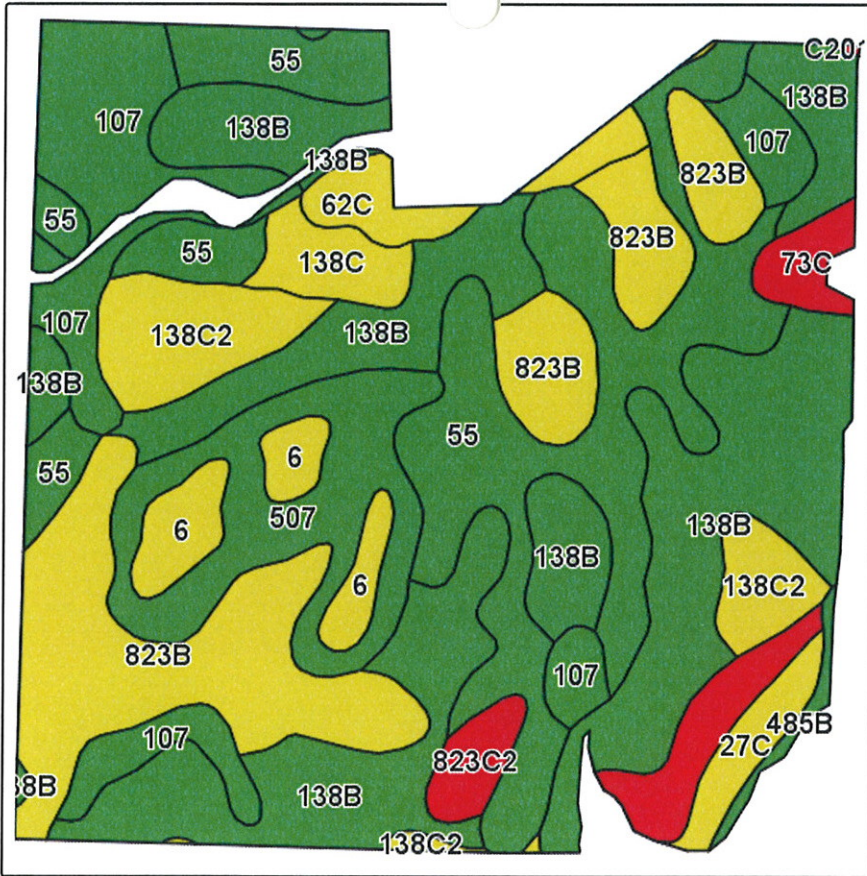


9/13/2012

Field borders provided by Farm Service Agency as of 5/21/2008. Aerial photography provided by Aerial Photography Field Office.



# Soils Map-CSR2



State: Iowa  
 County: Sac  
 Location: 11-89N-36W  
 Township: Delaware  
 Acres: 139.5  
 Date: 9/13/2012

AGRI & REAL ESTATE, INC  
**MIDWEST LAND**  
 712-262-3110 MANAGEMENT

Maps provided by:



**surety**  
 CUSTOMIZED ONLINE MAPPING  
 ©AgriData, Inc 2012  
 www.AgriDataInc.com

Field borders provided by Farm Service Agency as of 5/21/2008.  
 Soils data provided by USDA and NRCS.

Code	Soil Description	Acres	Percent of field	CSR Legend	Non-Irr Class	CSR2**
138B	Clarion loam, 2 to 5 percent slopes	40.6	29.2%	Green	Ile	73
55	Nicollet loam, 1 to 3 percent slopes	27.1	19.4%	Green	I	75
823B	Flagler sandy loam, calcareous subsoil variant, 2 to 5 percent slopes	21.4	15.3%	Yellow	IIIe	41
107	Webster silty clay loam, 0 to 2 percent slopes	13.4	9.6%	Green	IIw	74
507	Canisteo silty clay loam, 0 to 2 percent slopes	10.5	7.5%	Green	IIw	74
138C2	Clarion loam, 5 to 9 percent slopes, moderately eroded	7.5	5.4%	Yellow	IIIe	65
6	Okoboji silty clay loam, 0 to 1 percent slopes	4.2	3.0%	Yellow	IIIw	41
62E	Storden loam, 14 to 18 percent slopes	3	2.2%	Red	IVe	12
62C	Storden loam, 5 to 9 percent slopes	2.9	2.1%	Yellow	IIIe	50
138C	Clarion loam, 5 to 9 percent slopes	2.6	1.8%	Yellow	IIIe	68
27C	Terril loam, 3 to 8 percent slopes	2.2	1.6%	Yellow	IIIe	68
73C	Salida gravelly loamy sand, 5 to 9 percent slopes	1.7	1.2%	Red	III <sub>s</sub>	23
823C2	Flagler sandy loam, calcareous subsoil variant, 5 to 9 percent slopes, moderately eroded	1.7	1.2%	Red	IIIe	32
485B	Spillville loam, 2 to 5 percent slopes	0.7	0.5%	Green	Ile	75
<b>Weighted Average</b>						<b>64.2</b>

\*\*These values could be either CSR or CSR2 until updates are completed by October 1, 2012. To confirm value status, run a CSR map and compare values. If they are identical to the CSR2 map, the map reflects CSR values, if they are different, the map reflects CSR2 values