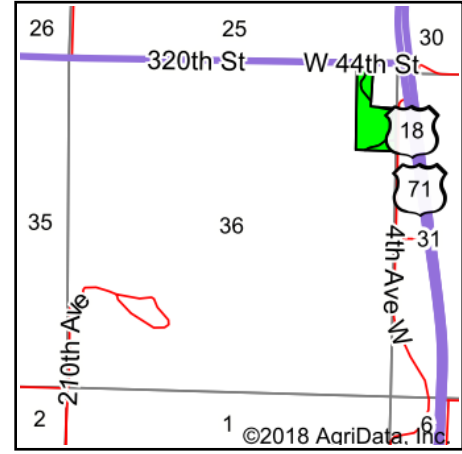


Soils Map



Soils data provided by USDA and NRCS.



State: **Iowa**
 County: **Clay**
 Location: **36-97N-37W**
 Township: **Spencer**
 Acres: **14**
 Date: **4/20/2018**

Maps Provided By:



Area Symbol: IA041, Soil Area Version: 27

Code	Soil Description	Acres	Percent of field	CSR2 Legend	Non-Irr Class *c	CSR2**	CSR
1508	Belmann clay loam, 0 to 2 percent slopes	10.09	72.1%		llw	74	64
379B	Ocheyedan clay loam, lacustrine substratum, 2 to 5 percent slopes	2.96	21.1%		lle	87	62
375	Fostoria clay loam, lacustrine substratum, 1 to 3 percent slopes	0.95	6.8%		lle	83	70
Weighted Average						77.4	64

**IA has updated the CSR values for each county to CSR2.

*c: Using Capabilities Class Dominant Condition Aggregation Method

Soils data provided by USDA and NRCS.