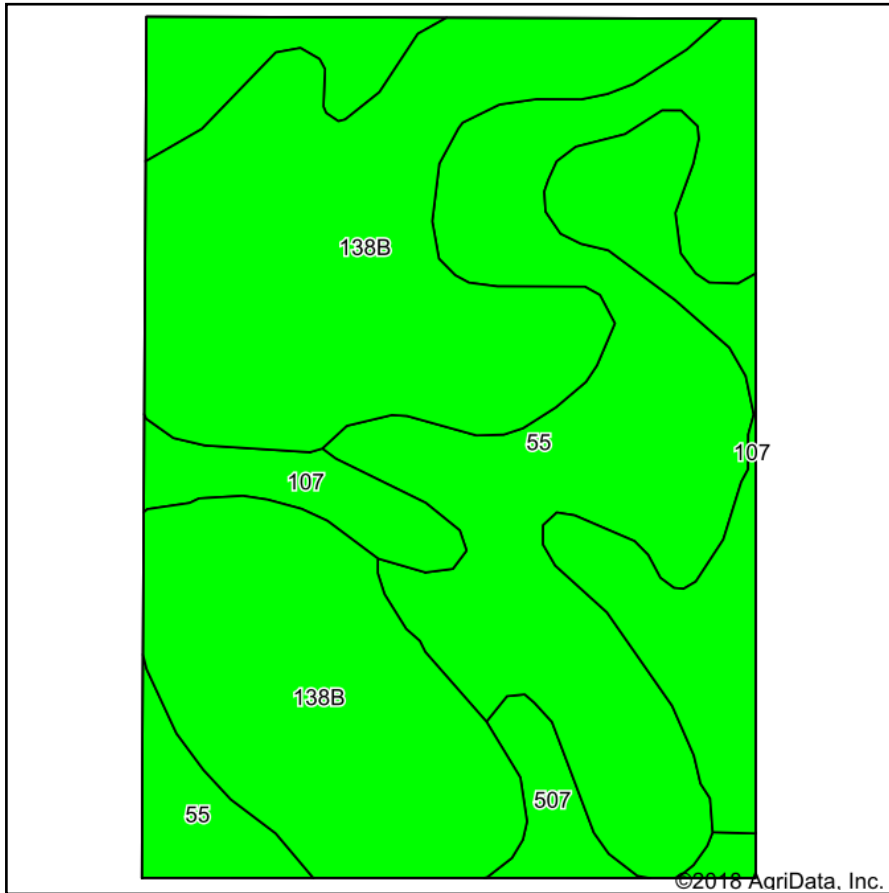
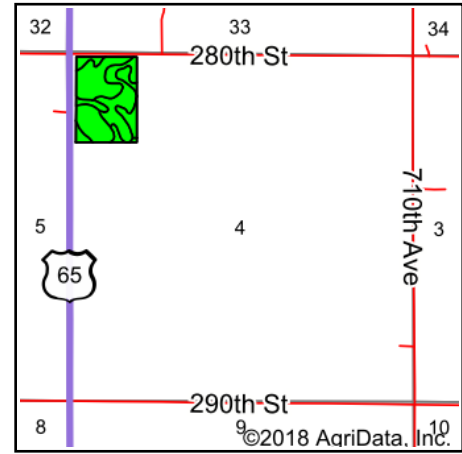


# Soils Map



Soils data provided by USDA and NRCS.



State: **Iowa**  
 County: **Story**  
 Location: **4-82N-21W**  
 Township: **Collins**  
 Acres: **27.9**  
 Date: **3/13/2018**

& REAL ESTATE, INC  
**MIDWEST LAND**  
 712-262-3110 MANAGEMENT

Maps Provided By:



## Archived Soils Ending 1/21/2012

Code	Soil Description	Acres	Percent of field	CSR Legend	Non-Irr Class *c	CSR*
138B	Clarion loam, 2 to 5 percent slopes	12.82	45.9%		Ile	86
55	Nicollet loam, 1 to 3 percent slopes	10.31	37.0%		Iw	94
107	Webster clay loam, 0 to 2 percent slopes	3.98	14.3%		IIw	89
507	Canisteo clay loam, 0 to 2 percent slopes	0.79	2.8%		IIw	84
<b>Weighted Average</b>						<b>89.3</b>

\*The CSR ratings are dated 1/21/2012 and will be available to aid in the transition to CSR2.

\*c: Using Capabilities Class Dominant Condition Aggregation Method

Soils data provided by USDA and NRCS.