

Midwest Land Management and Clinton Jones

LAND AUCTION

Thursday, November 1, 2018 at 10:00 A.M.



Sale Location: Clay County Fair & Events Center, 800 W 18th Street, Spencer, Iowa

Property Location: 1 mile east of Dickens, IA on Highway 18 and ¾ mile south on 300th Ave.

Legal Description: Parcel E located in the Southeast Quarter of the Northeast Quarter (SE¼ NE¼), Section Twenty (20), Township Ninety-six (96) North, Range Thirty-five (35) West of the 5th PM, Clay County, Iowa.

Surety/AgriData Avg. CSR2: 56.1

Surety/AgriData Avg. CSRI: 59.7

Primary Soils: Wadena, Cylinder and Biscay

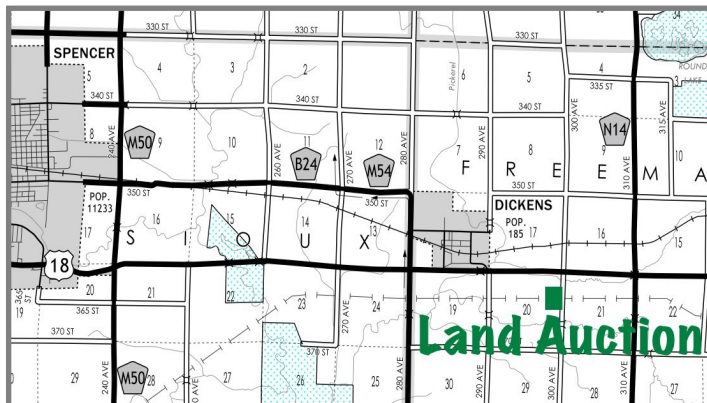
Real Estate Taxes: \$626

FSA Information (combined with adjoining land):

Cropland Acres: 60.29ac.

Corn Base: 30.1 ac. PLC Yield: 121 bu.

Soybean Base: 30.1 ac. PLC Yield: 40 bu.



Auctioneer's Note: Attention Land buyers here is a great opportunity to purchase a smaller tract of farmland in Clay County. The Tripp farm offers buyers an affordable opportunity to purchase farmland in Clay County. We look forward to seeing you at the auction.

For More Information Call Ben Hollesen 712-253-5779.

Terms: 10% earnest money down day of sale. Balance due at closing on or before December 7, 2018. Real estate taxes to be prorated to December 31, 2018. Farm has an open lease for the 2019 crop season. All final bids are subject to approval of seller.

Stanley Tripp, Owner

Auctioneers: Ben Hollesen 712-253-5779 and Clinton Jones 712-363-3522

Attorney: John Bjornstad • Bjornstad Law Office • Spirit Lake, Iowa

Midwest Land Management and Real Estate, Inc.

2506 11th Ave. SW, Spencer, IA 51301

Ben Hollesen • 712-253-5779

Travis Johnson • 712-330-5345

Shane Brant • 712-301-4664

www.midwestlandmanagement.com

MIDWEST LAND
 & REAL ESTATE, INC
 MANAGEMENT

Property information provided was obtained from sources deemed reliable, but the Auctioneer, Broker or Seller makes no guarantees as to its accuracy. All prospective buyers are urged to fully inspect the property, its conditions and to rely on their own conclusions. All sketches, dimensions and acreage figures in this information are approximate or "more or less". Average CSR information was obtained from Surety/Agri Data. Any announcements made the day of the sale shall supersede any previous information or oral statements. Midwest Land Management and Real Estate, Inc., affiliated licensees and the Auctioneer represent the Sellers exclusively.