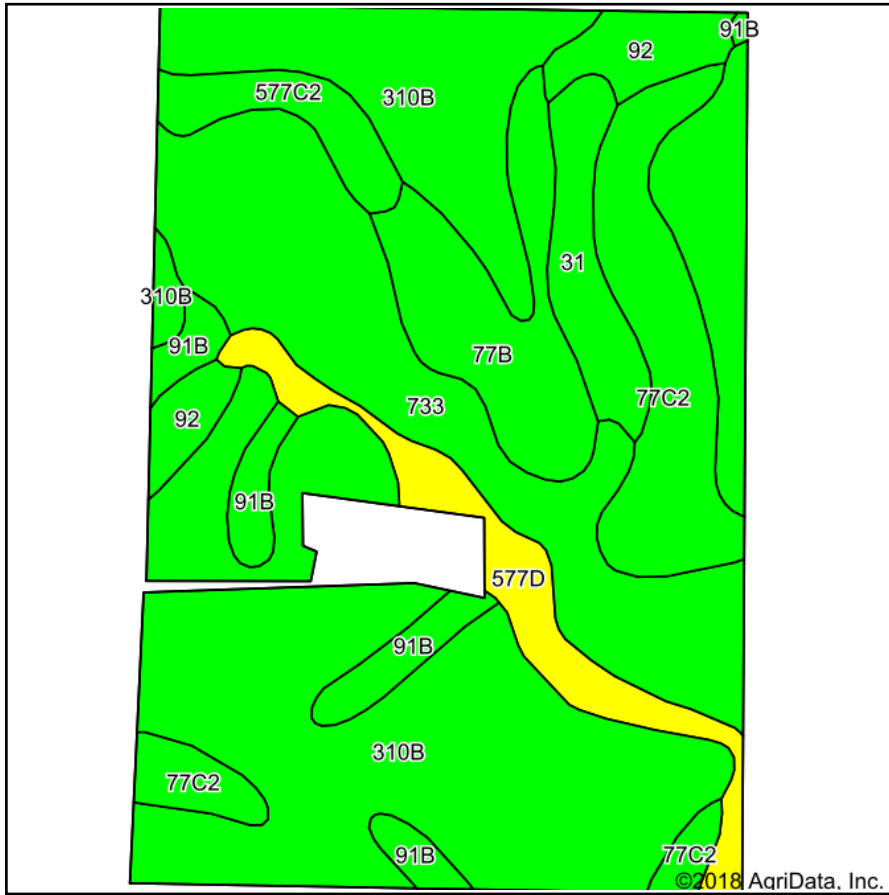
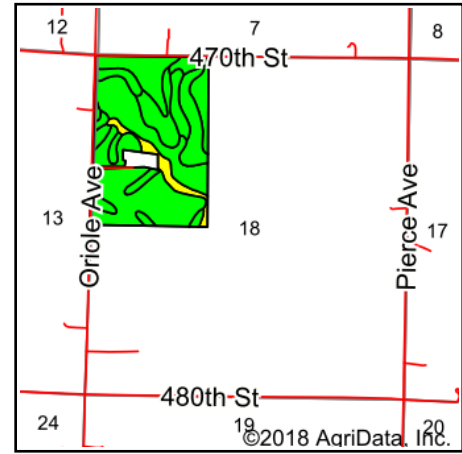


# Soils Map



Soils data provided by USDA and NRCS.



State: **Iowa**  
 County: **Obrien**  
 Location: **18-94N-41W**  
 Township: **Union**  
 Acres: **105**  
 Date: **10/30/2018**

**MIDWEST LAND** & REAL ESTATE, INC.  
 712-262-3110 MANAGEMENT

Maps Provided By:  

© AgriData, Inc. 2018 www.AgriDataInc.com

Area Symbol: IA141, Soil Area Version: 23

Code	Soil Description	Acres	Percent of field	CSR2 Legend	Non-Irr Class *c	CSR2**	CSR	*n NCCPI Soybeans
310B	Galva silty clay loam, 2 to 5 percent slopes	46.99	44.8%		Ile	95	70	74
733	Calco silty clay loam, 0 to 2 percent slopes, occasionally flooded	18.54	17.7%		IIw	78	68	71
77C2	Sac silty clay loam, loam substratum, 5 to 9 percent slopes, eroded	10.84	10.3%		IIIe	88	51	67
77B	Sac silty clay loam, loam substratum, 2 to 5 percent slopes	7.75	7.4%		Ile	95	68	75
577D	Everly clay loam, 9 to 14 percent slopes	5.85	5.6%		IIIe	56	39	70
91B	Primghar silty clay loam, 2 to 5 percent slopes	4.50	4.3%		Ile	95	78	76
31	Afton silty clay loam, 0 to 2 percent slopes, occasionally flooded	3.95	3.8%		IIw	80	72	65
92	Marcus silty clay loam, 0 to 2 percent slopes	3.71	3.5%		IIw	94	75	72
577C2	Everly clay loam, 5 to 9 percent slopes, moderately eroded	2.87	2.7%		IIIe	75	48	62
<b>Weighted Average</b>						<b>88</b>	<b>65.8</b>	<b>*n 71.9</b>

\*\*IA has updated the CSR values for each county to CSR2.

\*n: The aggregation method is "Weighted Average using major components"

\*c: Using Capabilities Class Dominant Condition Aggregation Method

Soils data provided by USDA and NRCS.