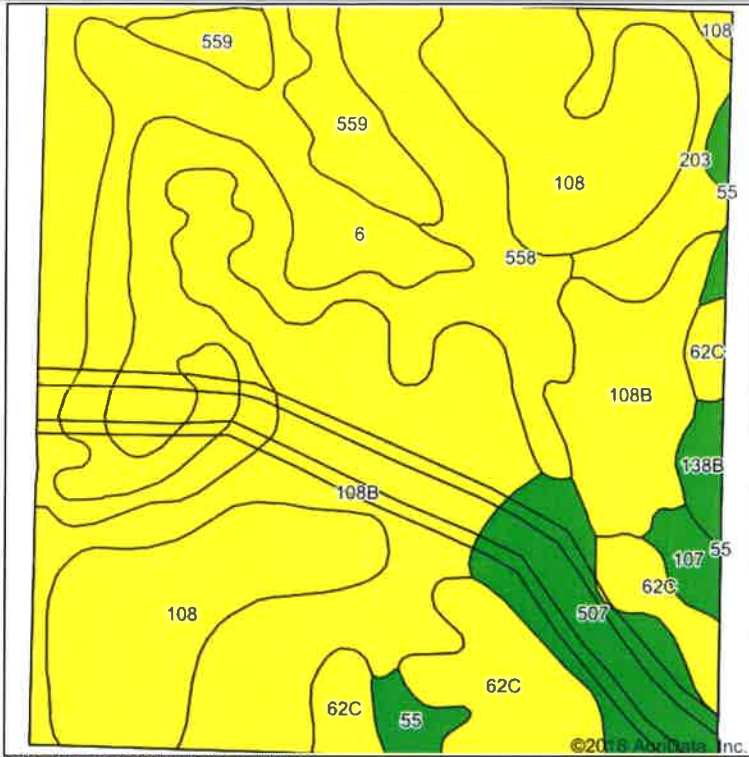
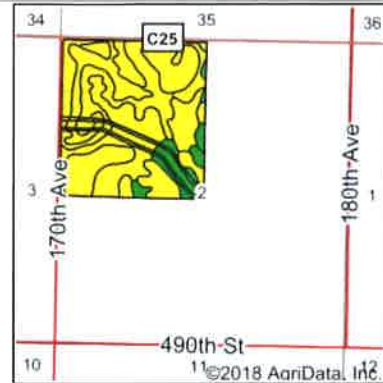


Soils Map



Soils data provided by USDA and NRCS.



State: **Iowa**
 County: **Buena Vista**
 Location: **2-92N-36W**
 Township: **Lincoln**
 Acres: **169.63**
 Date: **11/26/2018**

MIDWEST LAND & REAL ESTATE, INC.
 MANAGEMENT
 712-262-3110
 Maps Provided By
surety
 CUSTOMIZED ONLINE MAPPING
 © AgriData, Inc. 2018 www.AgrDataInc.com

Area Symbol: IA021, Soil Area Version: 24

Code	Soil Description	Acres	Percent of field	CSR2 Legend	Non-Irr Class *c	CSR2**	CSR	*n NCCPI Soybeans
108B	Wadena loam, 2 to 6 percent slopes	43.27	25.5%		Ile	52	48	52
558	Talcot clay loam, moderately deep, 0 to 2 percent slopes	35.49	20.9%		Ilw	54	60	52
108	Wadena loam, 0 to 2 percent slopes	30.25	17.8%		Ils	56	56	52
6	Okoboji silty clay loam, 0 to 1 percent slopes	17.76	10.5%		IIlw	59	54	77
62C	Storden loam, 6 to 10 percent slopes, moderately eroded	13.43	7.9%		IIIe	64	48	65
507	Canisteo clay loam, 0 to 2 percent slopes	10.34	6.1%		Ilw	84	74	79
559	Talcot clay loam, deep, 0 to 2 percent slopes	7.34	4.3%		Ilw	54	67	52
203	Cylinder loam, 0 to 2 percent slopes	5.90	3.5%		Ils	58		61
138B	Clarion loam, 2 to 6 percent slopes	2.48	1.5%		Ile	89	76	83
107	Webster clay loam, 0 to 2 percent slopes	1.71	1.0%		Ilw	86	79	80
55	Nicollet clay loam, 1 to 3 percent slopes	1.66	1.0%		lw	89	84	78
Weighted Average						58.3	*-	*n 58.6

**IA has updated the CSR values for each county to CSR2.
 *- CSR weighted average cannot be calculated on the current soils data, use prior data version for csr values.
 *n: The aggregation method is "Weighted Average using major components"
 *c: Using Capabilities Class Dominant Condition Aggregation Method

Soils data provided by USDA and NRCS.