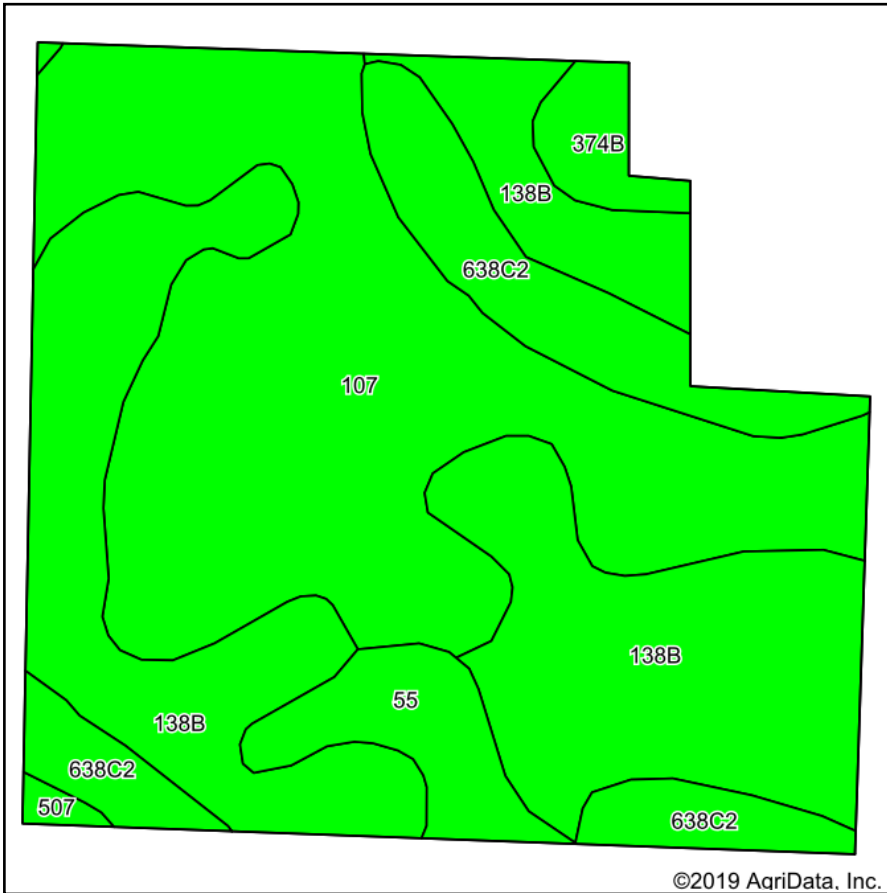
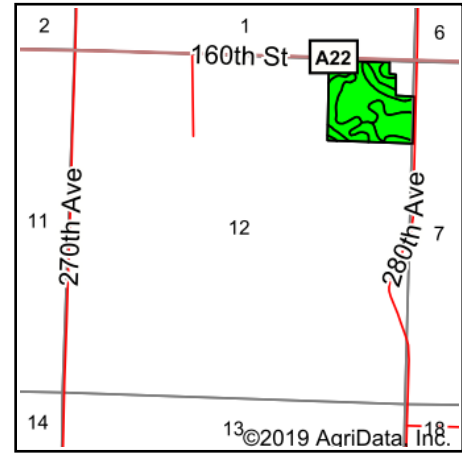


Soils Map



Soils data provided by USDA and NRCS.



State: **Iowa**
 County: **Dickinson**
 Location: **12-99N-36W**
 Township: **Center Grove**
 Acres: **33.97**
 Date: **1/23/2019**

& REAL ESTATE, INC
MIDWEST LAND
 712-262-3110 MANAGEMENT

Maps Provided By:



© AgriData, Inc. 2019

www.AgriDataInc.com



Area Symbol: IA059, Soil Area Version: 28

Code	Soil Description	Acres	Percent of field	CSR2 Legend	Non-Irr Class *c	CSR2**	CSR	*n NCCPI Soybeans
107	Webster clay loam, 0 to 2 percent slopes	13.86	40.8%		Ilw	86	70	80
138B	Clarion loam, 2 to 6 percent slopes	13.36	39.3%		Ile	89	73	83
638C2	Clarion-Storden complex, 6 to 10 percent slopes, moderately eroded	4.14	12.2%		IIIe	75	52	65
55	Nicollet clay loam, 1 to 3 percent slopes	1.66	4.9%		lw	89	73	78
374B	Okabena silty clay loam, 1 to 5 percent slopes	0.79	2.3%		lw	91	73	83
507	Canisteo clay loam, 0 to 2 percent slopes	0.16	0.5%		Ilw	84	71	79
Weighted Average						86.1	69.2	*n 79.3

**IA has updated the CSR values for each county to CSR2.

*n: The aggregation method is "Weighted Average using major components"

*c: Using Capabilities Class Dominant Condition Aggregation Method

Soils data provided by USDA and NRCS.