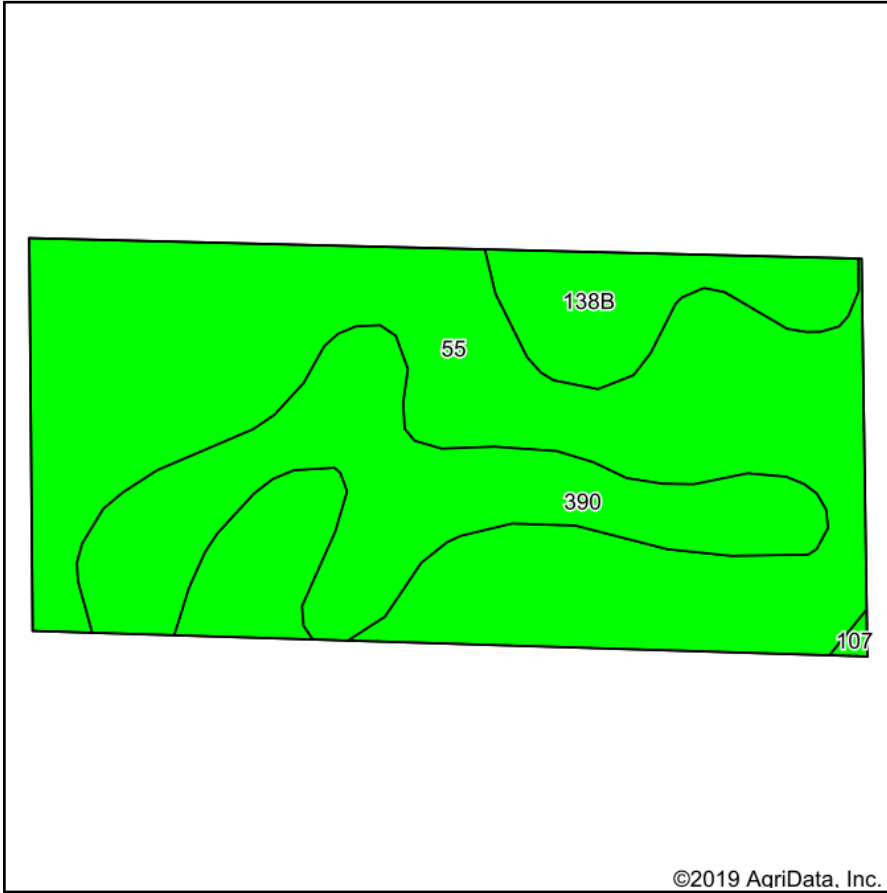
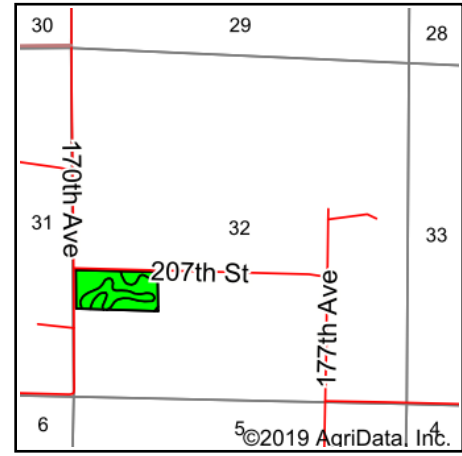


# Soils Map



Soils data provided by USDA and NRCS.



State: **Iowa**  
 County: **Dickinson**  
 Location: **32-99N-37W**  
 Township: **Lakeville**  
 Acres: **18.12**  
 Date: **4/15/2019**

& REAL ESTATE, INC  
**MIDWEST LAND**  
 712-262-3110 MANAGEMENT  
 Maps Provided By:  
  
 CUSTOMIZED ONLINE MAPPING  
 © AgriData, Inc. 2019 www.AgriDataInc.com



**Area Symbol: IA059, Soil Area Version: 28**

Code	Soil Description	Acres	Percent of field	CSR2 Legend	Non-Irr Class *c	CSR2**	CSR
55	Nicollet clay loam, 1 to 3 percent slopes	11.92	65.8%		lw	89	73
390	Waldorf silty clay loam, 0 to 2 percent slopes	4.54	25.1%		llw	69	59
138B	Clarion loam, 2 to 6 percent slopes	1.66	9.2%		lle	89	73
<b>Weighted Average</b>						<b>84</b>	<b>69.5</b>

\*\*IA has updated the CSR values for each county to CSR2.

\*c: Using Capabilities Class Dominant Condition Aggregation Method

Soils data provided by USDA and NRCS.