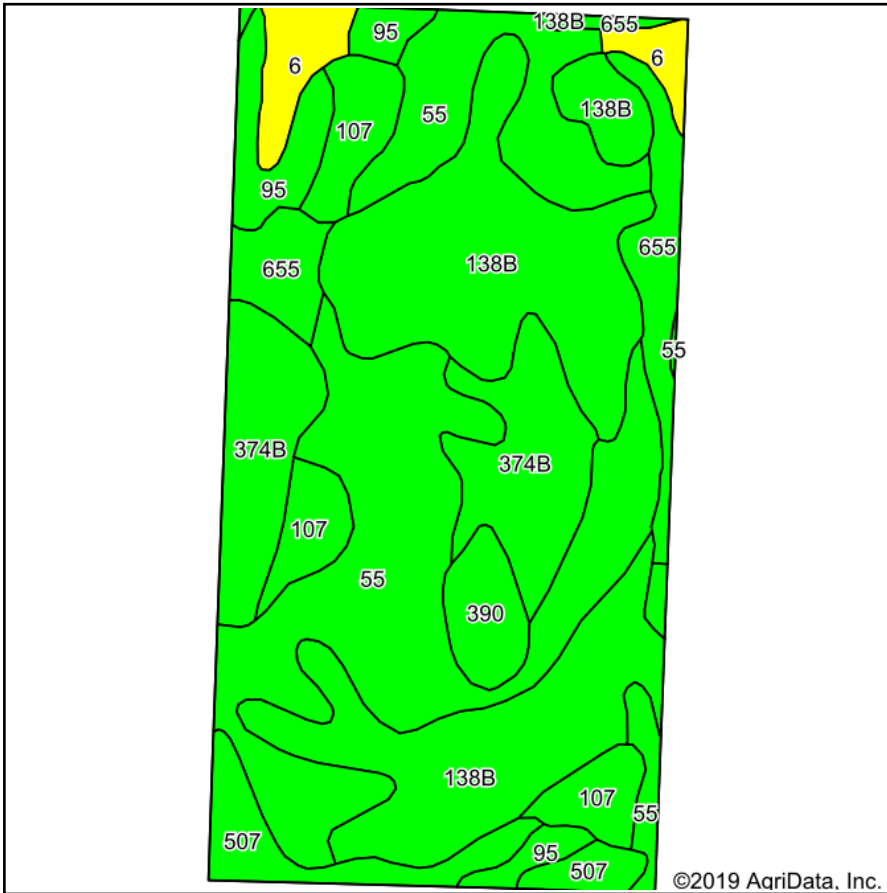
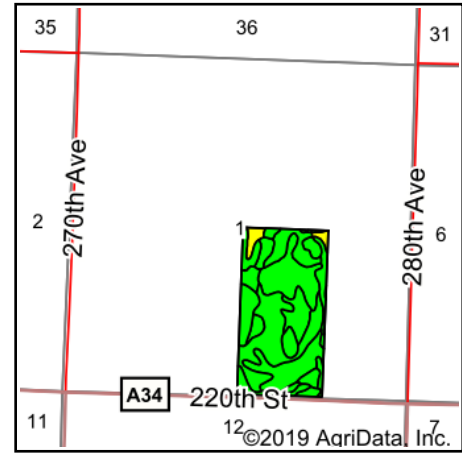


Soils Map



Soils data provided by USDA and NRCS.



State: **Iowa**
 County: **Dickinson**
 Location: **1-98N-36W**
 Township: **Milford**
 Acres: **78.26**
 Date: **5/7/2019**

MIDWEST LAND & REAL ESTATE, INC.
 712-262-3110 **MANAGEMENT**

Maps Provided By:

© AgriData, Inc. 2019 www.AgriDataInc.com

Area Symbol: IA059, Soil Area Version: 28

Code	Soil Description	Acres	Percent of field	CSR2 Legend	Non-Irr Class *c	CSR2**	CSR
55	Nicollet clay loam, 1 to 3 percent slopes	24.41	31.2%		Iw	89	73
138B	Clarion loam, 2 to 6 percent slopes	23.12	29.5%		Ile	89	73
374B	Okabena silty clay loam, 1 to 5 percent slopes	9.35	11.9%		Iw	91	73
655	Crippin loam, 1 to 3 percent slopes	4.87	6.2%		Ie	91	71
107	Webster clay loam, 0 to 2 percent slopes	4.84	6.2%		IIw	86	70
507	Canisteo clay loam, 0 to 2 percent slopes	3.57	4.6%		IIw	84	71
95	Harps clay loam, 0 to 2 percent slopes	3.51	4.5%		IIw	72	57
6	Okoboji silty clay loam, 0 to 1 percent slopes	2.59	3.3%		IIIw	59	43
390	Waldorf silty clay loam, 0 to 2 percent slopes	2.00	2.6%		IIw	69	59
Weighted Average						86.7	70.5

**IA has updated the CSR values for each county to CSR2.

*c: Using Capabilities Class Dominant Condition Aggregation Method

Soils data provided by USDA and NRCS.