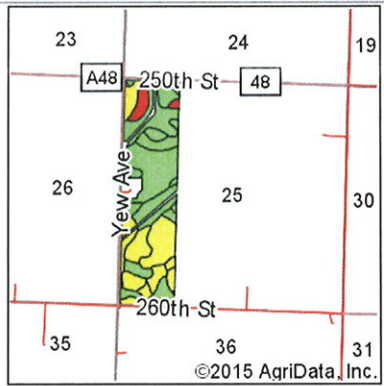
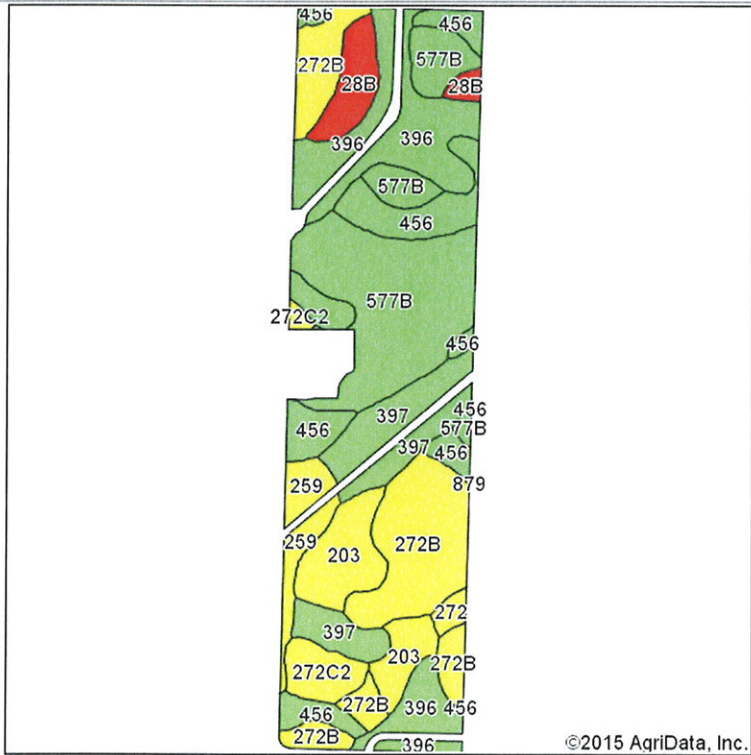


Soils Map-CSR2



State: Iowa
 County: Osceola
 Location: 25-98N-39W
 Township: Harrison
 Acres: 142.99
 Date: 12/16/2015

MIDWEST LAND & REAL ESTATE, INC.
 712-282-3110 MANAGEMENT

Maps Provided By:

Soils data provided by USDA and NRCS.

Area Symbol: IA143, Soil Area Version: 24

Code	Soil Description	Acres	Percent of field	CSR2 Legend	Non-Irr Class *c	CSR2**	CSR
577B	Everly clay loam, 2 to 5 percent slopes	32.55	22.8%		Ile	90	72
272B	Kanaranzi variant loam, 2 to 5 percent slopes	26.49	18.5%		IIle	65	47
396	Letri silty clay loam, calcareous, 0 to 2 percent slopes	21.47	15.0%		IIw	89	72
456	Wilmington silty clay loam, 0 to 3 percent slopes	18.77	13.1%		Iw	91	78
397	Letri silty clay loam, 0 to 2 percent slopes	14.04	9.8%		IIw	90	72
203	Cylinder clay loam, 32 to 40 inches to sand and gravel, 0 to 2 percent slopes	11.89	8.3%		IIs	60	49
28B	Dickman fine sandy loam, 2 to 5 percent slopes	6.12	4.3%		IIIle	28	14
259	Biscay clay loam, 0 to 2 percent slopes	5.57	3.9%		IIw	52	41
272C2	Kanaranzi variant loam, 5 to 9 percent slopes, moderately erode	4.93	3.4%		IVe	60	42
272	Kanaranzi variant loam, 0 to 2 percent slopes	1.16	0.8%		IIIs	70	52
Weighted Average						77.5	61.4

**IA has updated the CSR values for each county to CSR2.
 *c: Using Capabilities Class Dominant Condition Aggregation Method

Soils data provided by USDA and NRCS.