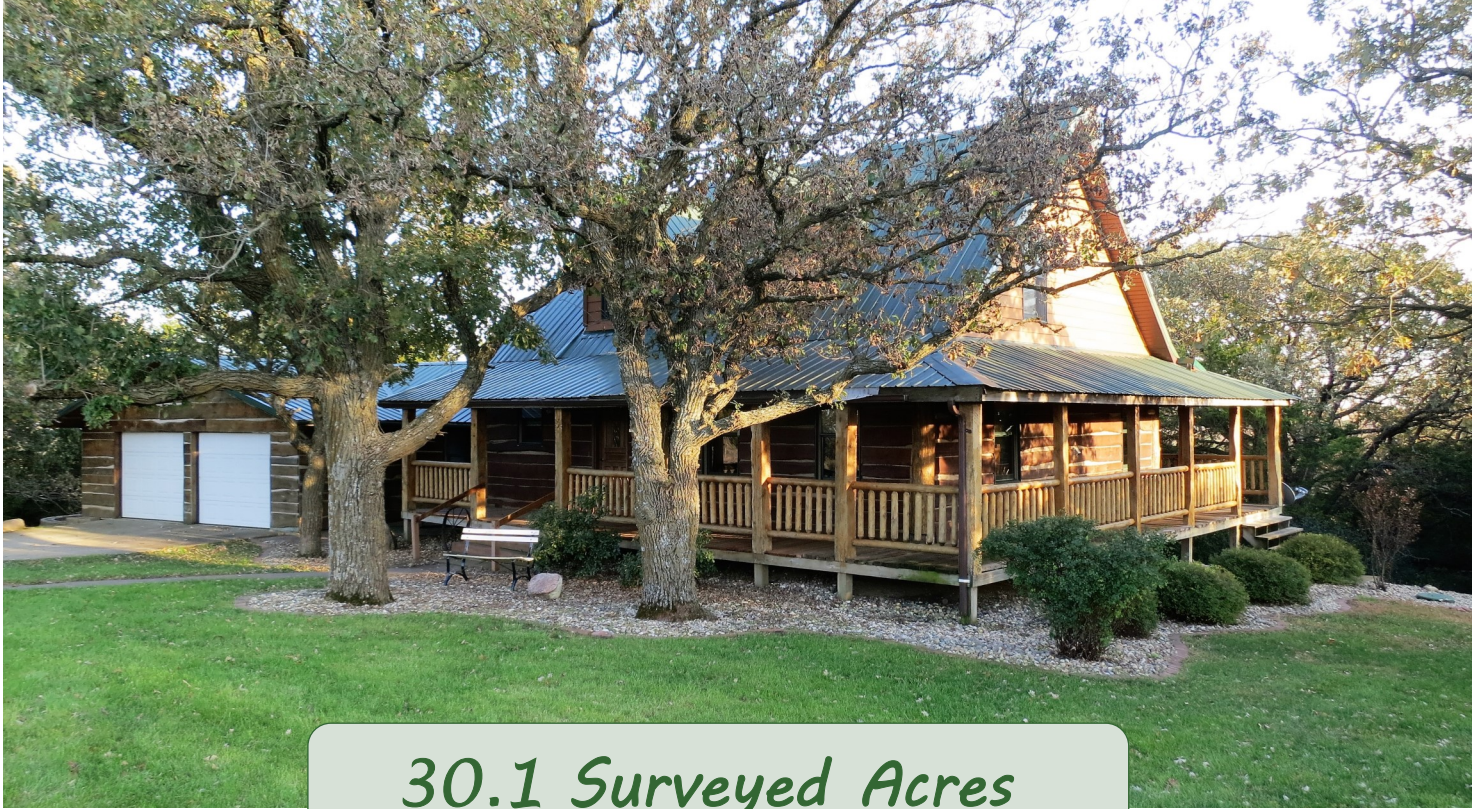


Midwest Land Management

LAND

FOR SALE

675 N. River Road • Linn Grove, Iowa



30.1 Surveyed Acres

With a total of 2,462 square feet of finished living area on 3 levels, this log home built in 2004 features:

- ◆ 3 bedrooms, 3 bathrooms
- ◆ Large open porch
- ◆ Stone fireplace
- ◆ Attached double car garage
- ◆ Scenic wooded and pasture views
- ◆ Excellent wildlife habitat

Real Estate Taxes: \$2,552 (estimated)



Legal Description: Lot E (excluding Lot I of Lot E) Section One (1), Township Ninety-three (93) North, Range Thirty-eight (38) West of the 5th P.M., Buena Vista County, Iowa.

For More Information, Call Ben Hollesen at 712-253-5779.

Price: \$289,000

Chris Hare, Owner

Attorney: Scot Bauermeister • Fitzgibbons Law Firm • Estherville, Iowa

Midwest Land Management and Real Estate, Inc.

Ben Hollesen • 712-253-5779

Travis Johnson • 712-330-5345

Shane Brant • 712-301-4664

Zach Anderson • 712-298-1606

www.midwestlandmanagement.com

& REAL ESTATE, INC
MIDWEST LAND
MANAGEMENT

Property information provided was obtained from sources deemed reliable, but the Broker or Seller makes no guarantees as to its accuracy. All prospective buyers are urged to fully inspect the property, its conditions and to rely on their own conclusions. All sketches, dimensions and acreage figures in this information are approximate or "more or less". Average CSR information was obtained from Surety/Agri Data. Midwest Land Management and Real Estate, Inc., affiliated licensees represent the Sellers exclusively.

675 N. River Road • Linn Grove, Iowa



For additional photos
visit our website,
midwestlandmanagement.com



Broker's Note: Attention acreage buyers and outdoor enthusiasts, this is an amazing opportunity to purchase a secluded acreage and timber property overlooking the Little Sioux River Valley. This custom built log cabin home offers a cozy & comfortable setting after a long day of hunting or a great retreat from the busy day-to-day hustle and bustle of the big city. The property also includes a smaller cabin nestled in the pine trees. The farm features mature oak, walnut and cedar trees which provide habitat for deer & turkeys. The farm is especially abundant with wild turkeys.

Chris Hare, Owner

For More Information, Contact Ben Hollesen 712-253-5779

Midwest Land Management and Real Estate, Inc.

2506 11th Avenue SW. • PO Box 909

Spencer, IA 51301

712-262-3110 • 800-952-2974

www.midwestlandmanagement.com

& REAL ESTATE, INC
MIDWEST LAND
MANAGEMENT

Property information provided was obtained from sources deemed reliable, but the Broker or Seller makes no guarantees as to its accuracy. All prospective buyers are urged to fully inspect the property, its conditions and to rely on their own conclusions. All sketches, dimensions and acreage figures in this information are approximate or "more or less".