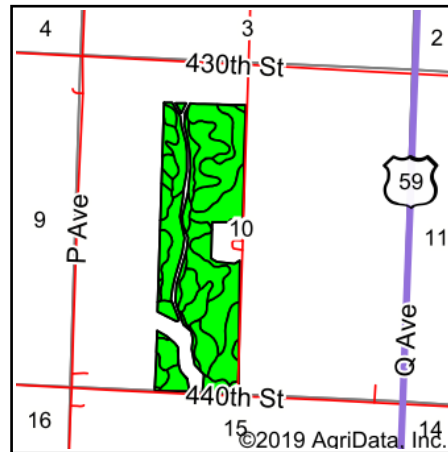


Soils Map



Soils data provided by USDA and NRCS.



State: **Iowa**
 County: **Cherokee**
 Location: **10-93N-40W**
 Township: **Cedar**
 Acres: **118.47**
 Date: **1/31/2020**

& REAL ESTATE, INC
MIDWEST LAND
 712-262-3110 MANAGEMENT
 Maps Provided By:

 CUSTOMIZED ONLINE MAPPING
 © AgriData, Inc. 2019 www.AgriDataInc.com



Area Symbol: IA035. Soil Area Version: 29		Acres	Percent of field	CSR2 Legend	Non-Irr Class *c	CSR2**	CSR
310B	Galva silty clay loam, 2 to 5 percent slopes	37.67	31.8%		Ile	95	71
91B	Primghar silty clay loam, 2 to 5 percent slopes	20.43	17.2%		Ile	95	79
92	Marcus silty clay loam, 0 to 2 percent slopes	19.11	16.1%		IIW	94	76
77B2	Sac silty clay loam, loam substratum, 2 to 5 percent slopes, eroded	14.64	12.4%		Ile	92	67
31	Afton silty clay loam, 0 to 2 percent slopes, occasionally flooded	10.90	9.2%		IIW	80	73
133	Colo silty clay loam, deep loess, 0 to 2 percent slopes, occasionally flooded	5.33	4.5%		IIW	78	74
310	Galva silty clay loam, 0 to 2 percent slopes	4.77	4.0%		I	100	76
77C2	Sac silty clay loam, loam substratum, 5 to 9 percent slopes, eroded	2.75	2.3%		IIIe	88	52
77B	Sac silty clay loam, loam substratum, 2 to 5 percent slopes	1.60	1.4%		Ile	95	69
310C	Galva silty clay loam, 5 to 9 percent slopes	1.27	1.1%		IIIe	87	56
Weighted Average						92.3	72.6

**IA has updated the CSR values for each county to CSR2.

*c: Using Capabilities Class Dominant Condition Aggregation Method

Soils data provided by USDA and NRCS.