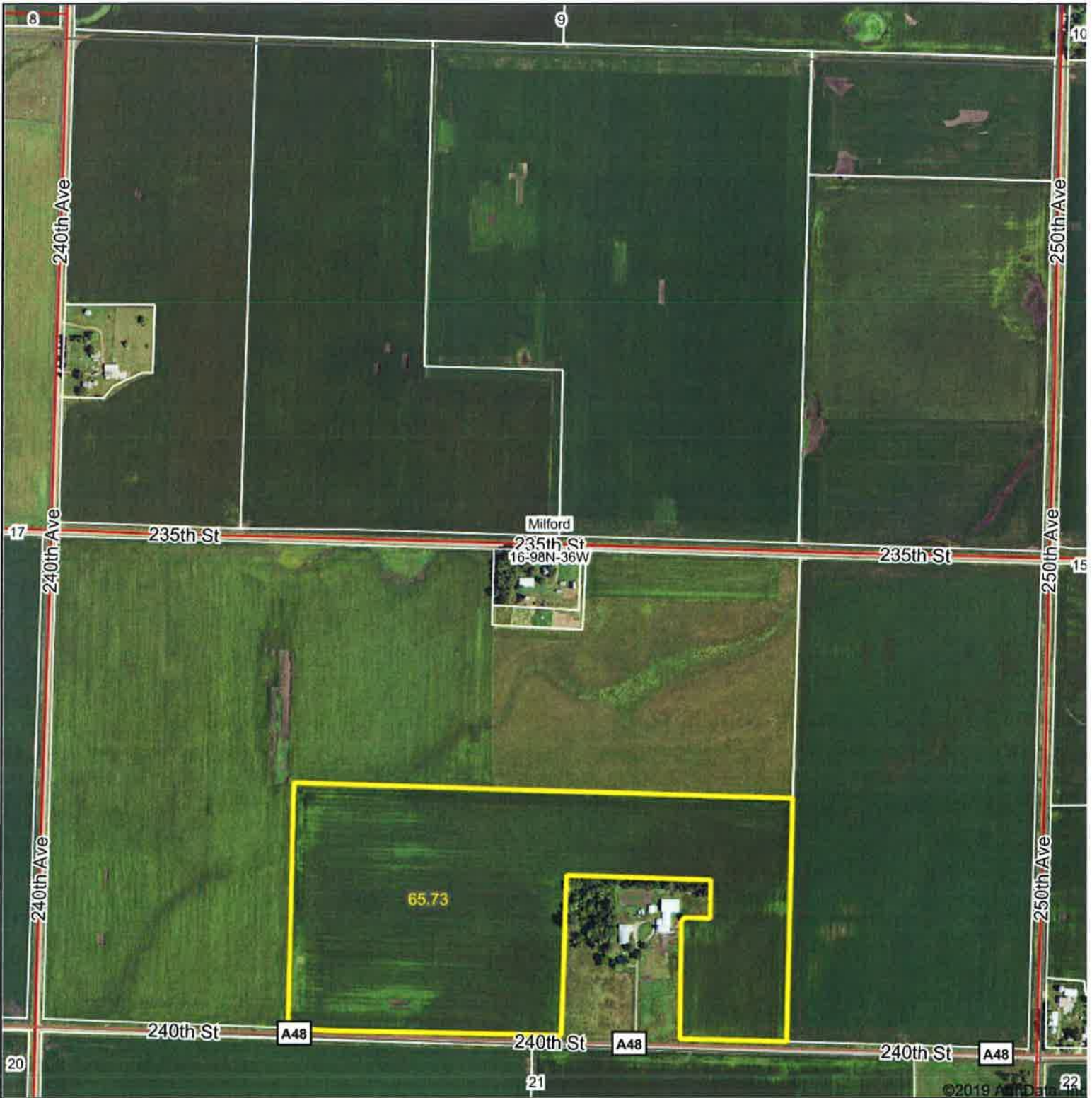


Aerial Map



MIDWEST LAND & REAL ESTATE, INC
712-262-3110 MANAGEMENT

Map Center: 43° 18' 22.06, -95° 6' 8.5

0ft 830ft 1660ft

16-98N-36W
Dickinson County
Iowa

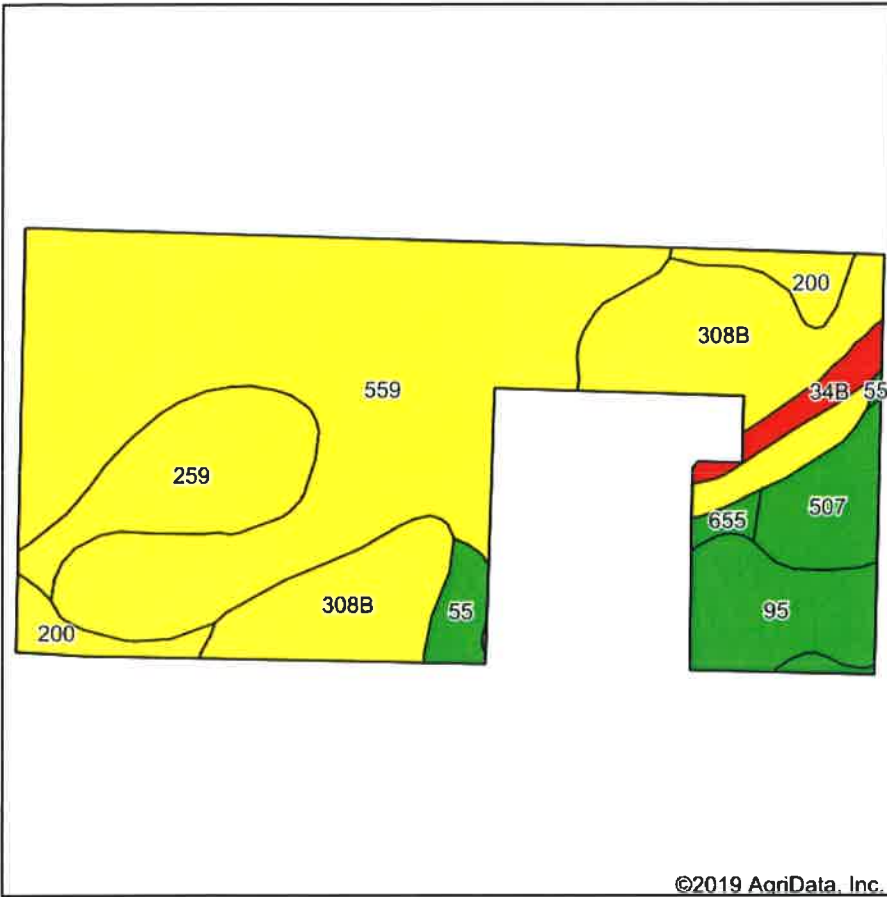


2/13/2020

Maps Provided By
 **surety**
CUSTOMIZED ONLINE MAPPING
© AgriData, Inc 2019 www.AgrDataInc.com

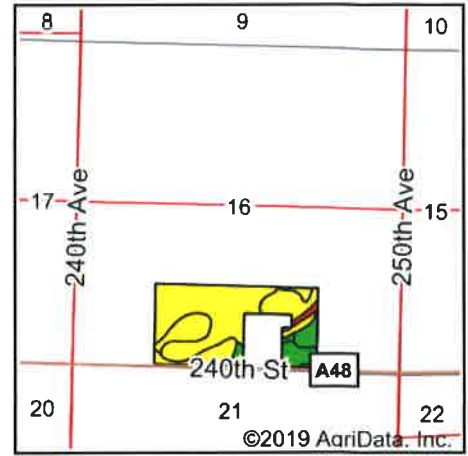
Field borders provided by Farm Service Agency as of 5/21/2008.

Soils Map



Soils data provided by USDA and NRCS.

©2019 AgriData, Inc.












State: **Iowa**
 County: **Dickinson**
 Location: **16-98N-36W**
 Township: **Milford**
 Acres: **65.73**
 Date: **2/13/2020**

& REAL ESTATE, INC
MIDWEST LAND
 712-262-3110 MANAGEMENT
 Maps Provided By

 CUSTOMIZED ONLINE MAPPING
 © AgriData, Inc 2019 www.AgriDataInc.com



Area Symbol: IA059, Soil Area Version: 29

Code	Soil Description	Acres	Percent of field	CSR2 Legend	Non-Irr Class *c	CSR2**	CSR
559	Talcot silty clay loam, 0 to 2 percent slopes	33.01	50.2%		IIw	54	40
308B	Wadena loam, 2 to 6 percent slopes	13.16	20.0%		Ile	52	36
259	Biscay clay loam, 0 to 2 percent slopes	6.35	9.7%		IIw	52	41
95	Harps clay loam, 0 to 2 percent slopes	4.38	6.7%		IIw	72	57
507	Canisteo clay loam, 0 to 2 percent slopes	2.94	4.5%		IIw	84	71
200	Cylinder complex, 0 to 2 percent slopes	2.59	3.9%		Ils	59	45
55	Nicollet clay loam, 1 to 3 percent slopes	1.29	2.0%		Iw	89	73
34B	Estherville sandy loam, 2 to 6 percent slopes	1.28	1.9%		IIIls	27	15
655	Crippin loam, 1 to 3 percent slopes	0.73	1.1%		Ie	91	71
Weighted Average						56.7	42.5

**IA has updated the CSR values for each county to CSR2.

*c: Using Capabilities Class Dominant Condition Aggregation Method

Soils data provided by USDA and NRCS.