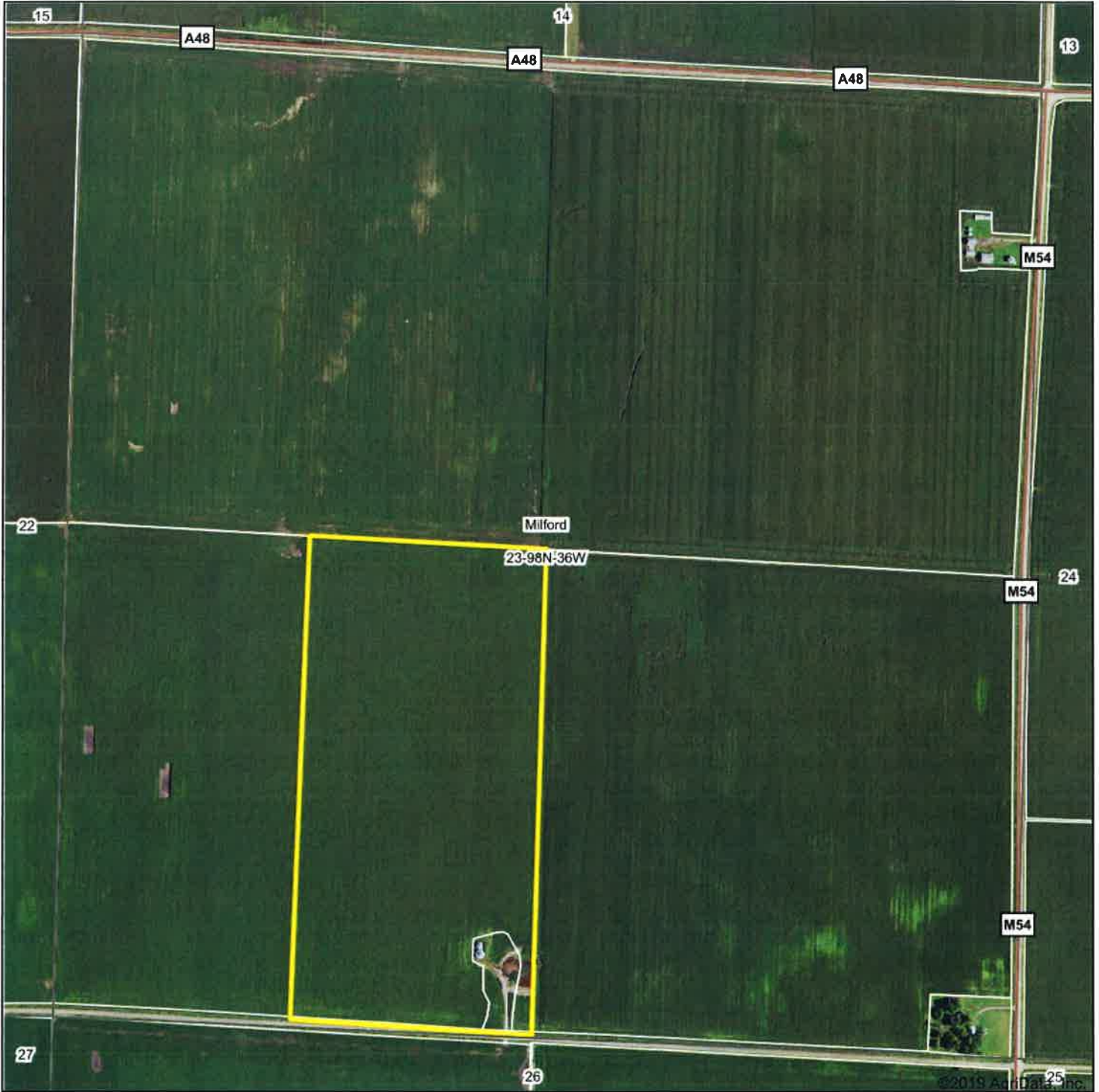


Aerial Map



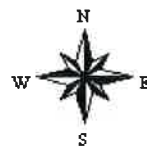
MIDWEST LAND
712-262-3110 MANAGEMENT

Map Center: 43° 17' 30.72, -95° 3' 45.62

0ft 850ft 1699ft

Maps Provided By:
surety
CUSTOMIZED ONLINE MAPPING
© AgriData, Inc. 2019 www.AgrDataInc.com

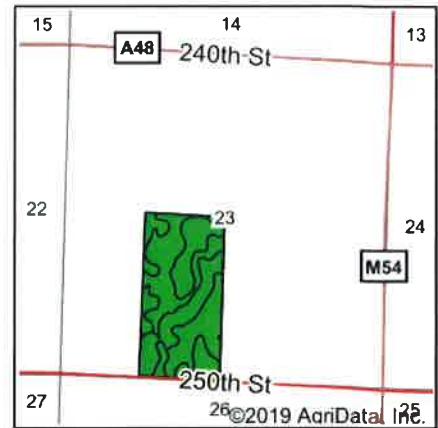
23-98N-36W
Dickinson County
Iowa



2/28/2020

Field borders provided by Farm Service Agency as of 5/21/2008.

Soils Map



State: **Iowa**
 County: **Dickinson**
 Location: **23-98N-36W**
 Township: **Milford**
 Acres: **79.4**
 Date: **2/28/2020**

REAL ESTATE, INC
MIDWEST LAND
 MANAGEMENT
 712-262-3110
 Maps Provided By

 CUSTOMIZED ONLINE MAPPING
 © AgriData, Inc 2019 www.AgriDataInc.com



Soils data provided by USDA and NRCS.

Area Symbol: IA059, Soil Area Version: 29

| Code | Soil Description | Acres | Percent of field | CSR2 Legend | Non-Irr Class *c | CSR2** | CSR |
|-------------------------|--|-------|------------------|-------------|------------------|-------------|-------------|
| 55 | Nicollet clay loam, 1 to 3 percent slopes | 37.33 | 47.0% | | lw | 89 | 73 |
| 138B | Clarion loam, 2 to 6 percent slopes | 23.05 | 29.0% | | lle | 89 | 73 |
| 655 | Crippin loam, 1 to 3 percent slopes | 15.98 | 20.1% | | le | 91 | 71 |
| 507 | Canisteo clay loam, 0 to 2 percent slopes | 1.88 | 2.4% | | llw | 84 | 71 |
| 107 | Webster clay loam, 0 to 2 percent slopes | 1.08 | 1.4% | | llw | 86 | 70 |
| 390 | Waldorf silty clay loam, 0 to 2 percent slopes | 0.08 | 0.1% | | llw | 69 | 59 |
| Weighted Average | | | | | | 89.2 | 72.5 |

**IA has updated the CSR values for each county to CSR2.
 *c: Using Capabilities Class Dominant Condition Aggregation Method
 Soils data provided by USDA and NRCS.