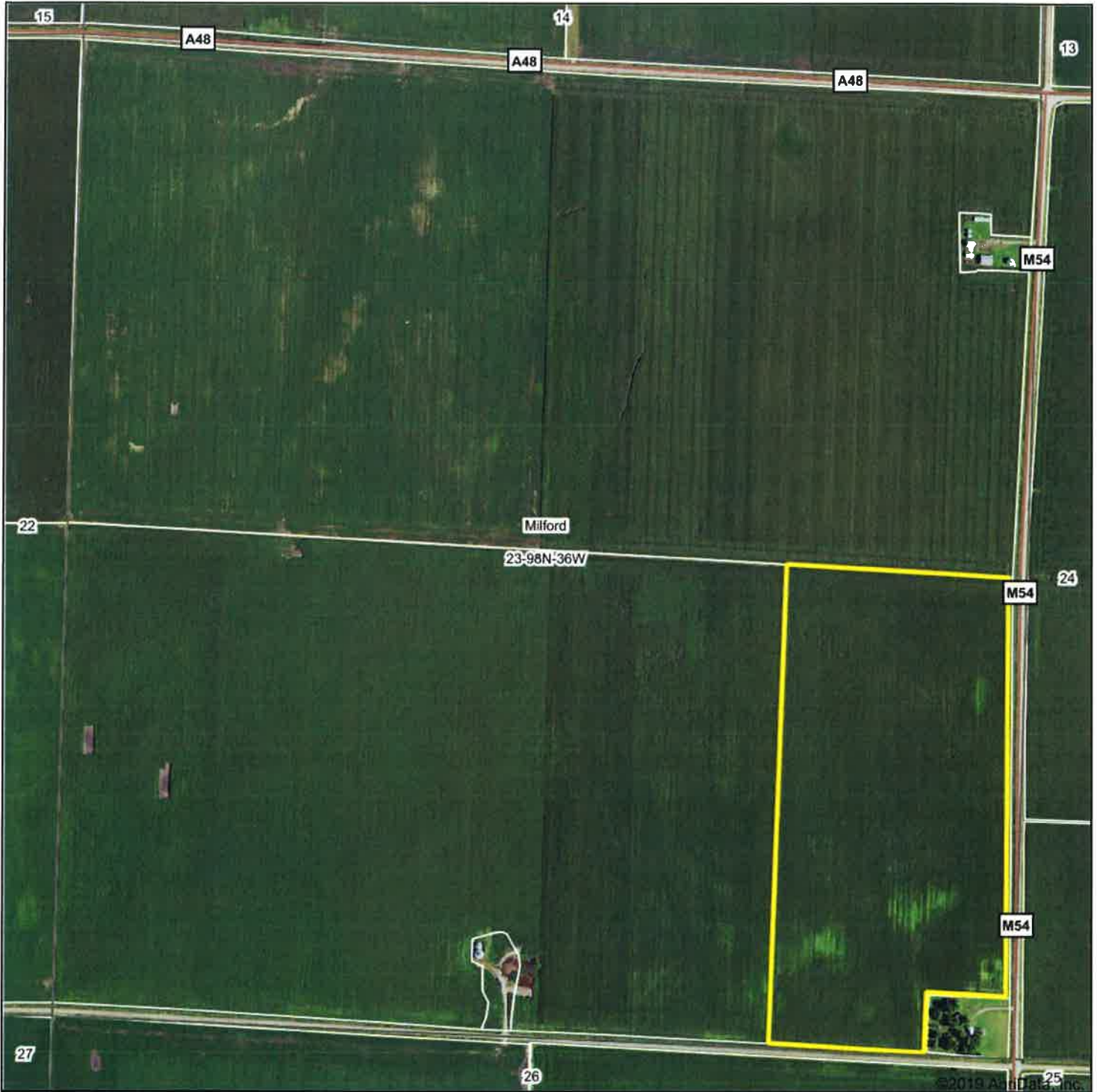


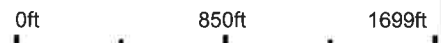
Aerial Map



©2019 AgriData, Inc.

MIDWEST LAND
MANAGEMENT
712-262-3110

Map Center: 43° 17' 30.72, -95° 3' 45.62



23-98N-36W
Dickinson County
Iowa



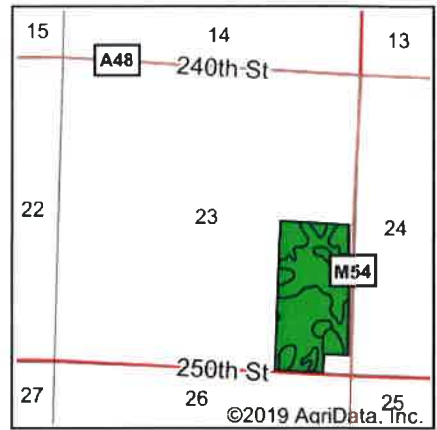
2/28/2020

Maps Provided By
surety
CUSTOMIZED ONLINE MAPPING

© AgriData, Inc. 2019 www.AgrDataInc.com

Field borders provided by Farm Service Agency as of 5/21/2008

Soils Map



State: **Iowa**
 County: **Dickinson**
 Location: **23-98N-36W**
 Township: **Milford**
 Acres: **71.99**
 Date: **2/28/2020**

MIDWEST LAND & REAL ESTATE, INC.
 712-262-3110 MANAGEMENT
 Maps Provided By
surety
 CUSTOMIZED ONLINE MAPPING
 © AgriData, Inc. 2019 www.AgriDataInc.com

Soils data provided by USDA and NRCS.

Area Symbol: IA059, Soil Area Version: 29

Code	Soil Description	Acres	Percent of field	CSR2 Legend	Non-Irr Class *c	CSR2**	CSR
55	Nicollet clay loam, 1 to 3 percent slopes	39.54	54.9%		lw	89	73
107	Webster clay loam, 0 to 2 percent slopes	25.37	35.2%		llw	86	70
138B	Clarion loam, 2 to 6 percent slopes	5.52	7.7%		lle	89	73
390	Waldorf silty clay loam, 0 to 2 percent slopes	1.42	2.0%		llw	69	59
374B	Okabena silty clay loam, 1 to 5 percent slopes	0.14	0.2%		lw	91	73
Weighted Average						87.6	71.7

**IA has updated the CSR values for each county to CSR2.
 *c: Using Capabilities Class Dominant Condition Aggregation Method
 Soils data provided by USDA and NRCS.