

# Aerial Map



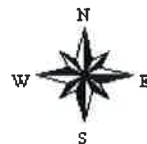
©2019 AgriData, Inc.

**MIDWEST LAND**  
MANAGEMENT  
712-262-3110

Map Center: 43° 17' 30.06, -95° 6' 8.49

0ft 830ft 1660ft

**21-98N-36W**  
**Dickinson County**  
**Iowa**

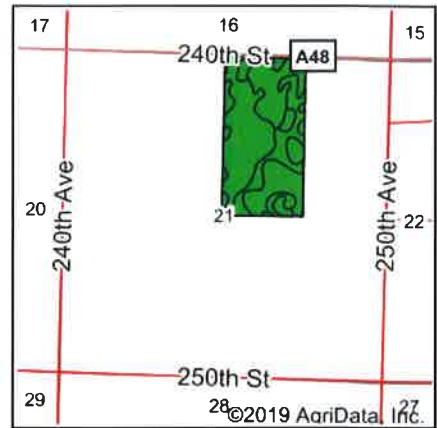


2/28/2020

Maps Provided By  
**surety**  
CUSTOMIZED ONLINE MAPPING  
© AgriData, Inc. 2019 www.AgriDataInc.com

Field borders provided by Farm Service Agency as of 5/21/2008.

# Soils Map



State: **Iowa**  
 County: **Dickinson**  
 Location: **21-98N-36W**  
 Township: **Milford**  
 Acres: **79.25**  
 Date: **2/28/2020**

& REAL ESTATE, INC  
**MIDWEST LAND**  
 MANAGEMENT  
 712-262-3110  
 Maps Provided By  
  
 © AgriData, Inc 2019 www.AgrDataInc.com

Soils data provided by USDA and NRCS.

Area Symbol: IA059, Soil Area Version: 29							
Code	Soil Description	Acres	Percent of field	CSR2 Legend	Non-Irr Class *c	CSR2**	CSR
55	Nicollet clay loam, 1 to 3 percent slopes	26.90	33.9%		Iw	89	73
655	Crippin loam, 1 to 3 percent slopes	15.07	19.0%		Ie	91	71
374B	Okabena silty clay loam, 1 to 5 percent slopes	13.60	17.2%		Iw	91	73
107	Webster clay loam, 0 to 2 percent slopes	13.37	16.9%		Ilw	86	70
138B	Clarion loam, 2 to 6 percent slopes	5.50	6.9%		Ile	89	73
390	Waldorf silty clay loam, 0 to 2 percent slopes	2.01	2.5%		Ilw	69	59
507	Canisteo clay loam, 0 to 2 percent slopes	1.40	1.8%		Ilw	84	71
95	Harps clay loam, 0 to 2 percent slopes	0.75	0.9%		Ilw	72	57
1032	Spicer silty clay loam, 0 to 2 percent slopes	0.51	0.6%		Ilw	91	74
308B	Wadena loam, 2 to 6 percent slopes	0.14	0.2%		Ile	52	36
<b>Weighted Average</b>						<b>88.4</b>	<b>71.5</b>

\*\*IA has updated the CSR values for each county to CSR2.  
 \*c: Using Capabilities Class Dominant Condition Aggregation Method  
 Soils data provided by USDA and NRCS.