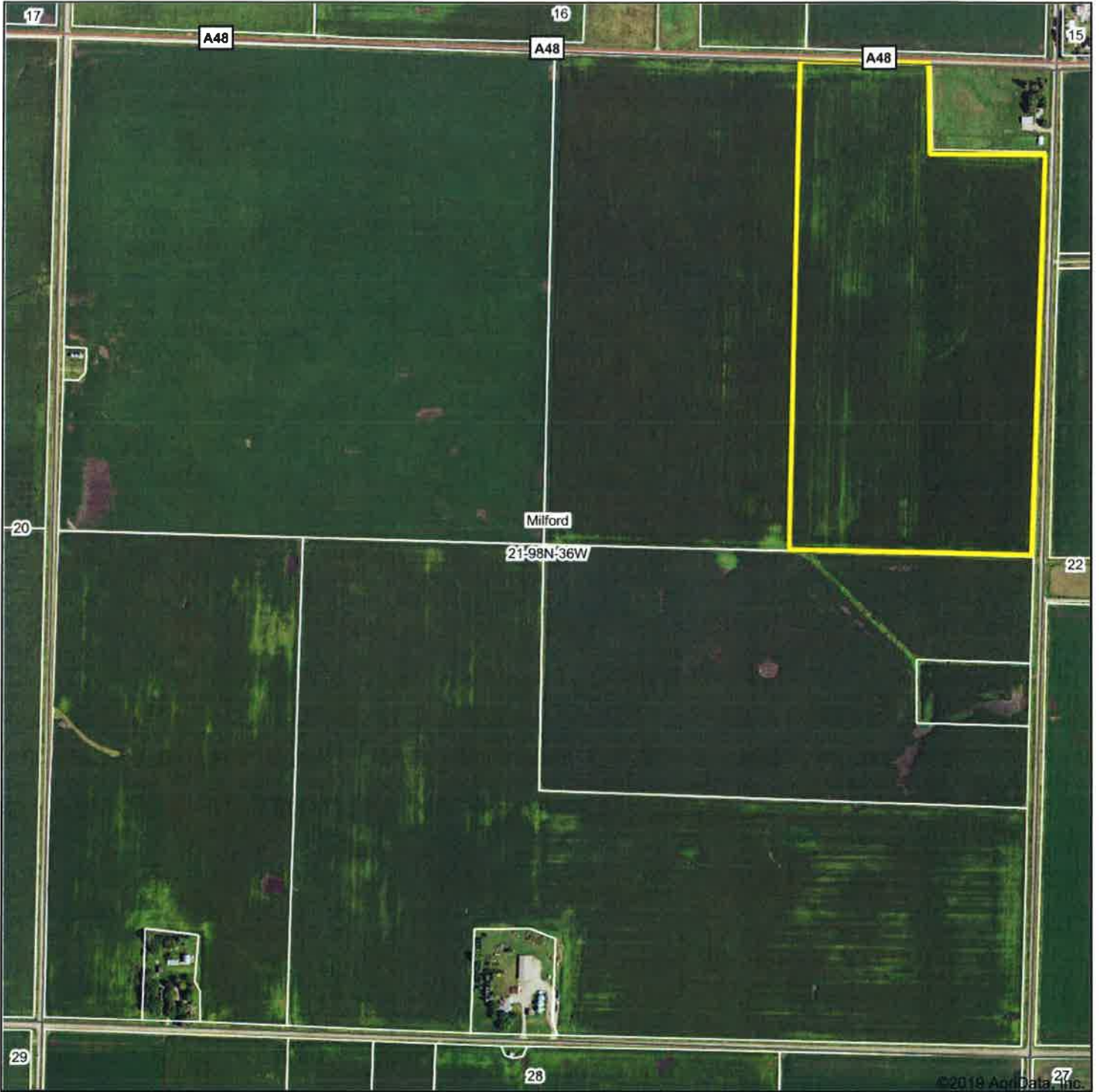


Aerial Map



& REAL ESTATE, INC
MIDWEST LAND
712-262-3110 MANAGEMENT

Map Center: 43° 17' 30.06, -95° 6' 8.49

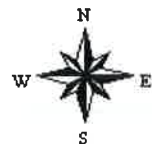
0ft 830ft 1660ft

21-98N-36W
Dickinson County
Iowa

Maps Provided By:

CUSTOMIZED ONLINE MAPPING

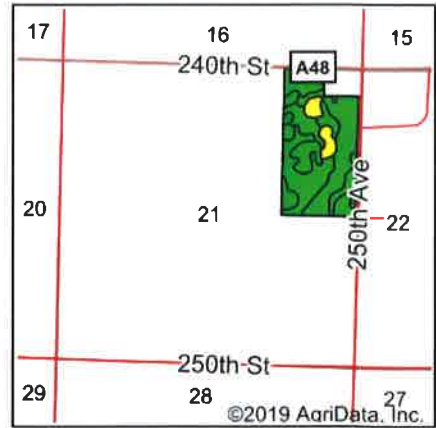
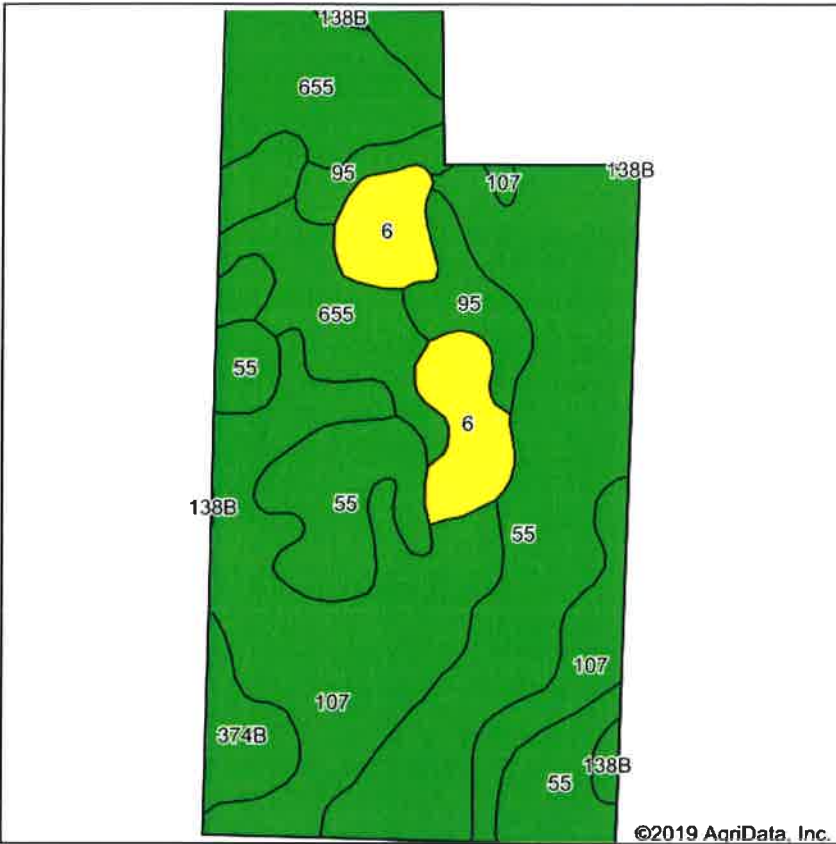
© AgriData, Inc. 2019 www.AgrDataInc.com



2/28/2020

Field borders provided by Farm Service Agency as of 5/21/2008

Soils Map



State: **Iowa**
 County: **Dickinson**
 Location: **21-98N-36W**
 Township: **Milford**
 Acres: **71.67**
 Date: **2/28/2020**

& REAL ESTATE, INC
MIDWEST LAND
 MANAGEMENT
 712-262-3110
 Maps Provided By

 CUSTOMIZED ONLINE MAPPING
 © AgriData, Inc. 2019 www.AgrDataInc.com

Soils data provided by USDA and NRCS.

Area Symbol: IA059, Soil Area Version: 29							
Code	Soil Description	Acres	Percent of field	CSR2 Legend	Non-Irr Class *c	CSR2**	CSR
55	Nicollet clay loam, 1 to 3 percent slopes	28.09	39.2%		Iw	89	73
107	Webster clay loam, 0 to 2 percent slopes	20.74	28.9%		IIw	86	70
655	Crippin loam, 1 to 3 percent slopes	10.68	14.9%		Ie	91	71
6	Okoboji silty clay loam, 0 to 1 percent slopes	5.27	7.4%		IIIw	59	43
95	Harps clay loam, 0 to 2 percent slopes	3.88	5.4%		IIw	72	57
374B	Okabena silty clay loam, 1 to 5 percent slopes	2.40	3.3%		Iw	91	73
138B	Clarion loam, 2 to 6 percent slopes	0.61	0.9%		Ile	89	73
Weighted Average						85.4	68.8

**IA has updated the CSR values for each county to CSR2.
 *c: Using Capabilities Class Dominant Condition Aggregation Method
 Soils data provided by USDA and NRCS.