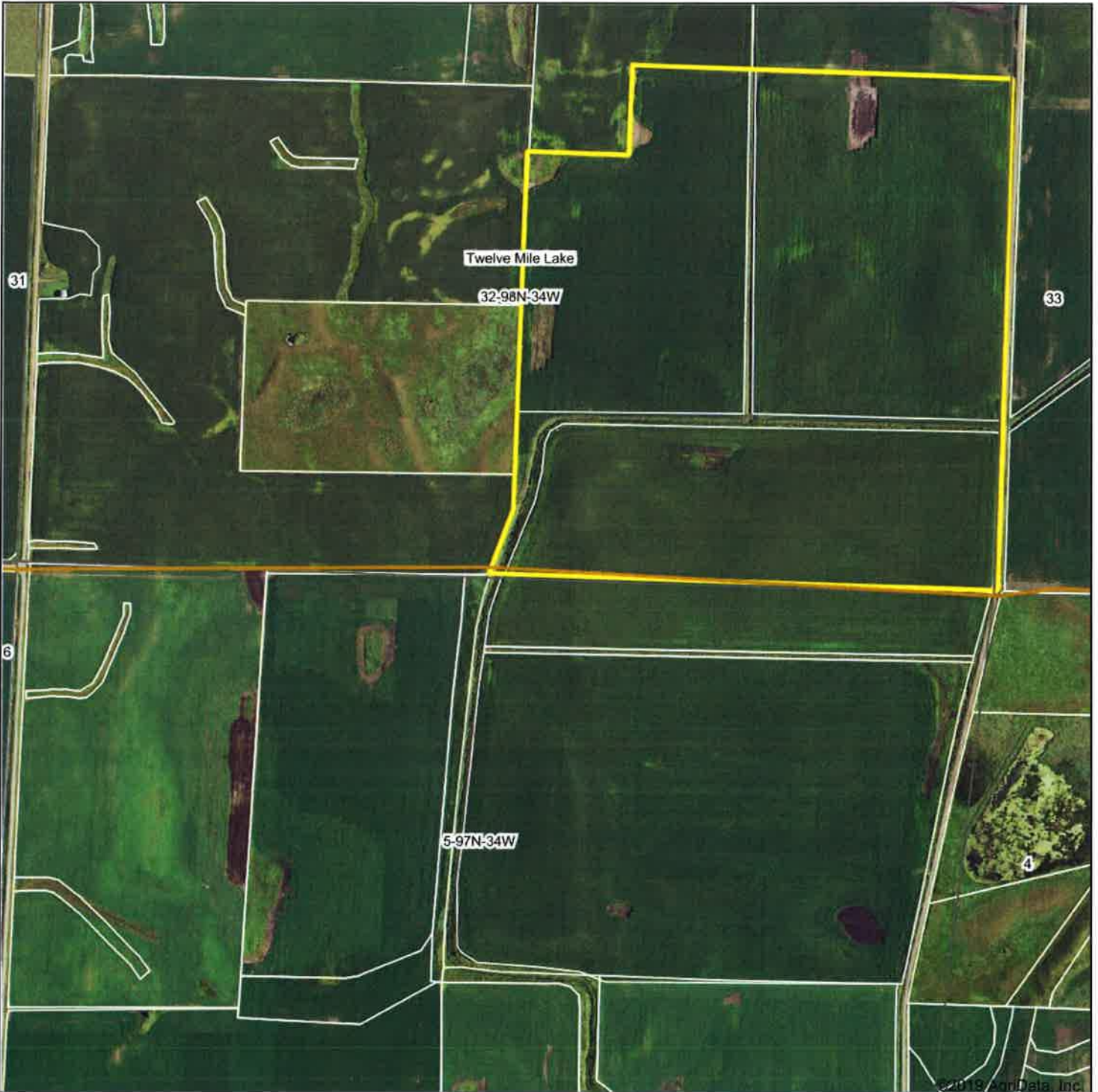


# Aerial Map



©2019 AgriData, Inc.

**MIDWEST LAND**  
MANAGEMENT  
712-262-3110

Map Center: 43° 15' 19.94, -94° 53' 8.1



**32-98N-34W**  
Emmet County  
Iowa

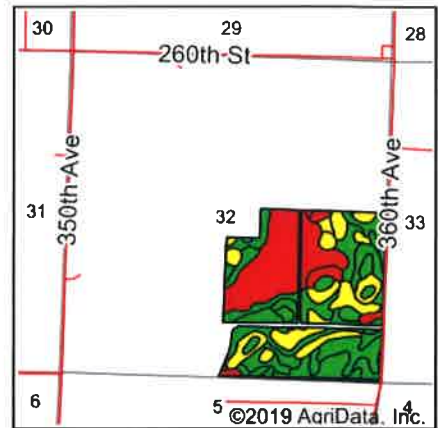
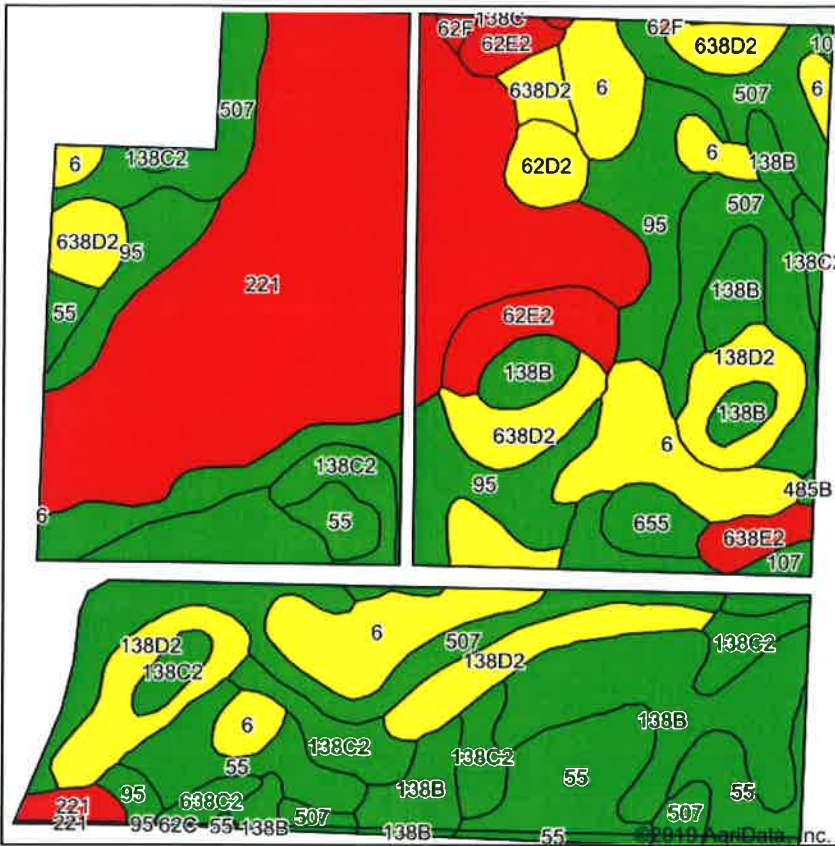


2/28/2020

Maps Provided By  
**surety**  
CUSTOMER ONLINE MAPPING  
© AgriData, Inc. 2019 www.AgrDataInc.com

Field borders provided by Farm Service Agency as of 5/21/2008.

# Soils Map



State: Iowa  
 County: Emmet  
 Location: 32-98N-34W  
 Township: Twelve Mile Lake  
 Acres: 150.26  
 Date: 2/13/2020

& REAL ESTATE, INC  
**MIDWEST LAND**  
 MANAGEMENT  
 712-262-3110  
 Maps Provided By  
**surety**  
 CUSTOMIZED ONLINE MAPPING  
 © AgriData, Inc 2019 www.AgrDataInc.com

Soils data provided by USDA and NRCS.

Area Symbol: IA063, Soil Area Version: 29  
 Area Symbol: IA147, Soil Area Version: 26

Code	Soil Description	Acres	Percent of field	CSR2 Legend	Non-Irr Class *c	CSR2**	CSR
221	Klossner muck, 0 to 1 percent slopes	37.87	25.2%		Illw	32	45
507	Canisteo clay loam, 0 to 2 percent slopes	22.64	15.1%		Ilw	84	73
95	Harps clay loam, 0 to 2 percent slopes	14.59	9.7%		Ilw	72	57
138B	Clarion loam, 2 to 6 percent slopes	14.50	9.6%		Ile	89	74
6	Okoboji silty clay loam, 0 to 1 percent slopes	14.48	9.6%		Illw	59	53
55	Nicollet clay loam, 1 to 3 percent slopes	11.34	7.5%		Iw	89	82
138D2	Clarion loam, 9 to 14 percent slopes, moderately eroded	9.19	6.1%		Ille	51	50
138C2	Clarion loam, 6 to 10 percent slopes, moderately eroded	8.28	5.5%		Ille	83	59
638D2	Omsrud-Storden complex, 10 to 16 percent slopes, moderately eroded	5.98	4.0%		Ive	53	44
62E2	Storden loam, 10 to 22 percent slopes, moderately eroded	3.71	2.5%		Ive	32	29
655	Crippin loam, 1 to 3 percent slopes	1.53	1.0%		Ie	91	77
62D2	Storden loam, 10 to 16 percent slopes, moderately eroded	1.49	1.0%		Ive	41	38
638E2	Omsrud-Storden complex, 10 to 22 percent slopes, moderately eroded	1.24	0.8%		Ive	36	34
107	Webster clay loam, 0 to 2 percent slopes	0.88	0.6%		Ilw	86	77
55	Nicollet clay loam, 1 to 3 percent slopes	0.79	0.5%		Iw	89	84
638C2	Clarion-Storden complex, 6 to 10 percent slopes, moderately eroded	0.71	0.5%		Ille	75	53
62F	Belview loam, 16 to 30 percent slopes	0.36	0.2%		Vle	17	11
507	Canisteo clay loam, 0 to 2 percent slopes	0.25	0.2%		Ilw	84	74
138B	Clarion loam, 2 to 6 percent slopes	0.22	0.1%		Ile	89	76
485B	Spillville loam, 2 to 5 percent slopes	0.13	0.1%		Ile	88	79
221	Klossner muck, 0 to 1 percent slopes	0.08	0.1%		Illw	32	47
<b>Weighted Average</b>						<b>62.7</b>	<b>58</b>

\*\*IA has updated the CSR values for each county to CSR2.  
 \*c: Using Capabilities Class Dominant Condition Aggregation Method  
 Soils data provided by USDA and NRCS.