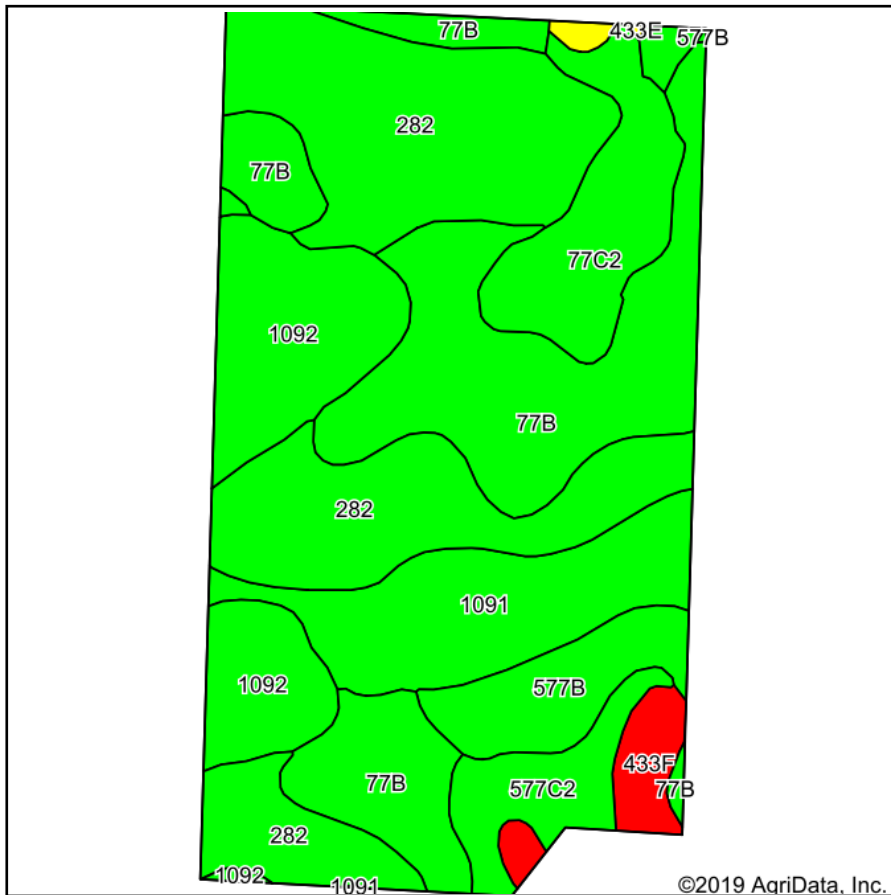
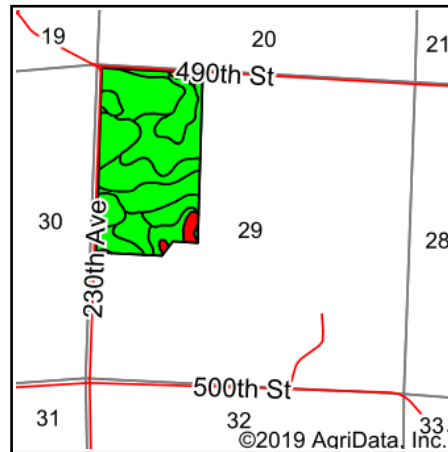


Soils Map



Soils data provided by USDA and NRCS.



State: **Iowa**
 County: **Clay**
 Location: **29-94N-36W**
 Township: **Herdland**
 Acres: **122.55**
 Date: **5/13/2020**

& REAL ESTATE, INC
MIDWEST LAND
 712-262-3110 MANAGEMENT
 Maps Provided By:

 CUSTOMIZED ONLINE MAPPING
 © AgriData, Inc. 2019 www.AgriDataInc.com



Area Symbol: IA041. Soil Area Version: 29							
Code	Soil Description	Acres	Percent of field	CSR2 Legend	Non-Irr Class *c	CSR2**	CSR
282	Ransom silty clay loam, 1 to 3 percent slopes	37.77	30.8%		lw	95	81
77B	Sac silty clay loam, loam substratum, 2 to 5 percent slopes	30.86	25.2%		lle	95	71
1092	Gillett Grove silty clay loam, 0 to 2 percent slopes	15.43	12.6%		llw	94	78
1091	McCreath silty clay loam, 0 to 2 percent slopes	13.15	10.7%		lw	98	83
77C2	Sac silty clay loam, loam substratum, 5 to 9 percent slopes, eroded	9.52	7.8%		llle	88	53
577B	Everly clay loam, 2 to 5 percent slopes	6.21	5.1%		lle	88	68
577C2	Everly clay loam, 5 to 9 percent slopes, moderately eroded	6.10	5.0%		llle	83	51
433F	Moneta loam, 18 to 25 percent slopes	3.08	2.5%		vle	30	5
637D2	Everly-Moneta complex, 9 to 14 percent slopes, moderately eroded	0.43	0.4%		llle	56	37
Weighted Average						91.9	71.9

**IA has updated the CSR values for each county to CSR2.
 *c: Using Capabilities Class Dominant Condition Aggregation Method
 Soils data provided by USDA and NRCS.