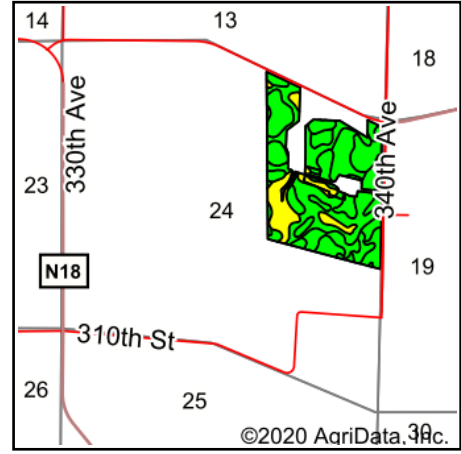


# Soils Map










Soils data provided by USDA and NRCS.



State: **Iowa**  
 County: **Clay**  
 Location: **24-97N-35W**  
 Township: **Lake**  
 Acres: **115.26**  
 Date: **9/22/2020**

& REAL ESTATE, INC  
**MIDWEST LAND**  
 712-262-3110 MANAGEMENT  
 Maps Provided By:  
  
 CUSTOMIZED ONLINE MAPPING  
 © AgriData, Inc. 2020 www.AgriDataInc.com



Area Symbol: IA041. Soil Area Version: 30							
Code	Soil Description	Acres	Percent of field	CSR2 Legend	Non-Irr Class *c	CSR2**	CSR
107	Webster clay loam, 0 to 2 percent slopes	37.19	32.3%		IIw	86	77
138B	Clarion loam, 2 to 6 percent slopes	36.19	31.4%		Ile	89	74
55	Nicollet clay loam, 1 to 3 percent slopes	18.12	15.7%		Iw	89	82
6	Okoboji silty clay loam, 0 to 1 percent slopes	12.71	11.0%		IIIw	59	55
138C2	Clarion loam, 6 to 10 percent slopes, moderately eroded	7.70	6.7%		IIIe	83	59
835D2	Omsrud-Storden complex, 10 to 16 percent slopes, moderately eroded	2.43	2.1%		IVe	53	46
95	Harps clay loam, 0 to 2 percent slopes	0.92	0.8%		IIw	72	57
<b>Weighted Average</b>						<b>83.4</b>	<b>72.4</b>

\*\*IA has updated the CSR values for each county to CSR2.  
 \*c: Using Capabilities Class Dominant Condition Aggregation Method  
 Soils data provided by USDA and NRCS.