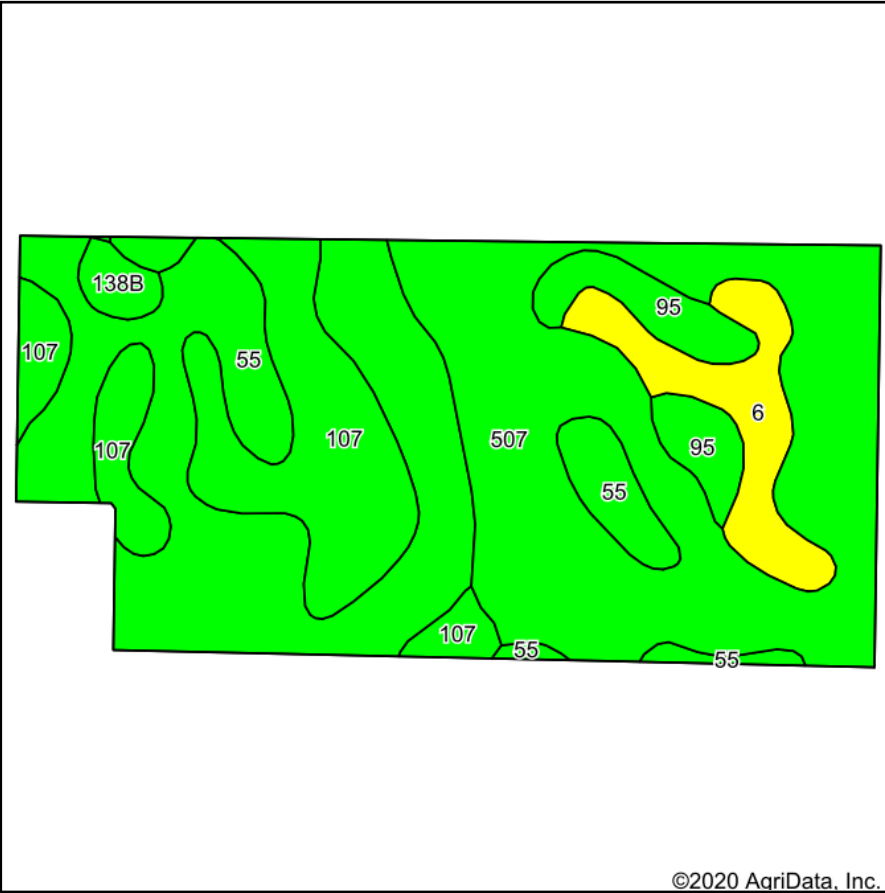
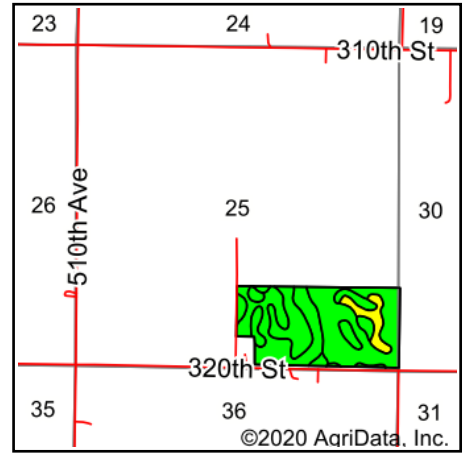


# Soils Map



Soils data provided by USDA and NRCS.



State: **Iowa**  
 County: **Palo Alto**  
 Location: **25-97N-32W**  
 Township: **Vernon**  
 Acres: **76.1**  
 Date: **11/19/2020**

**MIDWEST LAND** & REAL ESTATE, INC  
 712-262-3110 MANAGEMENT  
 Maps Provided By: **surety**  
 CUSTOMIZED ONLINE MAPPING  
 © AgriData, Inc. 2020 www.AgriDataInc.com

Area Symbol: IA147. Soil Area Version: 27								
Code	Soil Description	Acres	Percent of field	CSR2 Legend	Non-Irr Class *c	CSR2**	CSR	
507	Canisteo clay loam, 0 to 2 percent slopes	27.31	35.9%		llw	84	74	
55	Nicollet clay loam, 1 to 3 percent slopes	24.41	32.1%		lw	89	84	
107	Webster clay loam, 0 to 2 percent slopes	13.96	18.3%		llw	86	79	
6	Okoboji silty clay loam, 0 to 1 percent slopes	5.38	7.1%		lllw	59	54	
95	Harps clay loam, 0 to 2 percent slopes	4.01	5.3%		llw	72	59	
138B	Clarion loam, 2 to 6 percent slopes	1.03	1.4%		lle	89	76	
<b>Weighted Average</b>						<b>83.6</b>	<b>75.9</b>	

\*\*IA has updated the CSR values for each county to CSR2.  
 \*c: Using Capabilities Class Dominant Condition Aggregation Method  
 Soils data provided by USDA and NRCS.