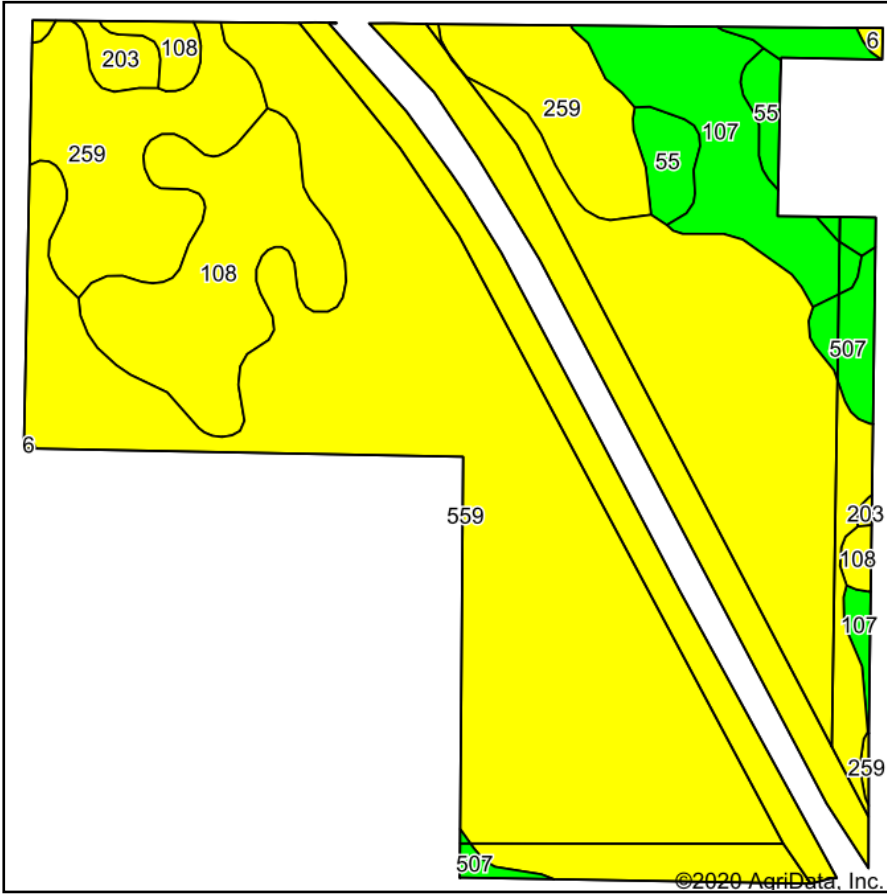
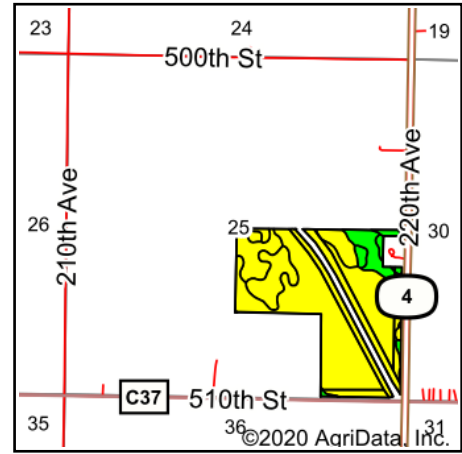


Soils Map



Soils data provided by USDA and NRCS.



State: **Iowa**
 County: **Pocahontas**
 Location: **25-92N-33W**
 Township: **Sherman**
 Acres: **103.11**
 Date: **12/10/2020**

MIDWEST LAND & REAL ESTATE, INC
 MANAGEMENT
 712-262-3110

Maps Provided By:

 CUSTOMIZED ONLINE MAPPING
 © AgriData, Inc. 2020 www.AgriDataInc.com



Code	Soil Description	Acres	Percent of field	CSR2 Legend	Non-Irr Class *c	CSR2**	CSR
559	Talcot clay loam, 32 to 40 inches to sand and gravel, 0 to 2 percent slopes	69.79	67.7%	Yellow	Ilw	54	69
259	Biscay clay loam, 0 to 2 percent slopes	11.96	11.6%	Yellow	Ilw	52	73
108	Wadena loam, 0 to 2 percent slopes	9.64	9.3%	Yellow	Ils	56	52
107	Webster clay loam, 0 to 2 percent slopes	6.09	5.9%	Green	Ilw	86	81
507	Canisteo clay loam, 0 to 2 percent slopes	2.40	2.3%	Green	Ilw	84	76
55	Nicollet clay loam, 1 to 3 percent slopes	2.18	2.1%	Green	lw	89	86
203	Cylinder loam, 0 to 2 percent slopes	0.92	0.9%	Yellow	Ils	58	74
6	Okoboji silty clay loam, 0 to 1 percent slopes	0.13	0.1%	Yellow	Illw	59	55
Weighted Average						57.3	69.1

**IA has updated the CSR values for each county to CSR2.
 *c: Using Capabilities Class Dominant Condition Aggregation Method
 Soils data provided by USDA and NRCS.