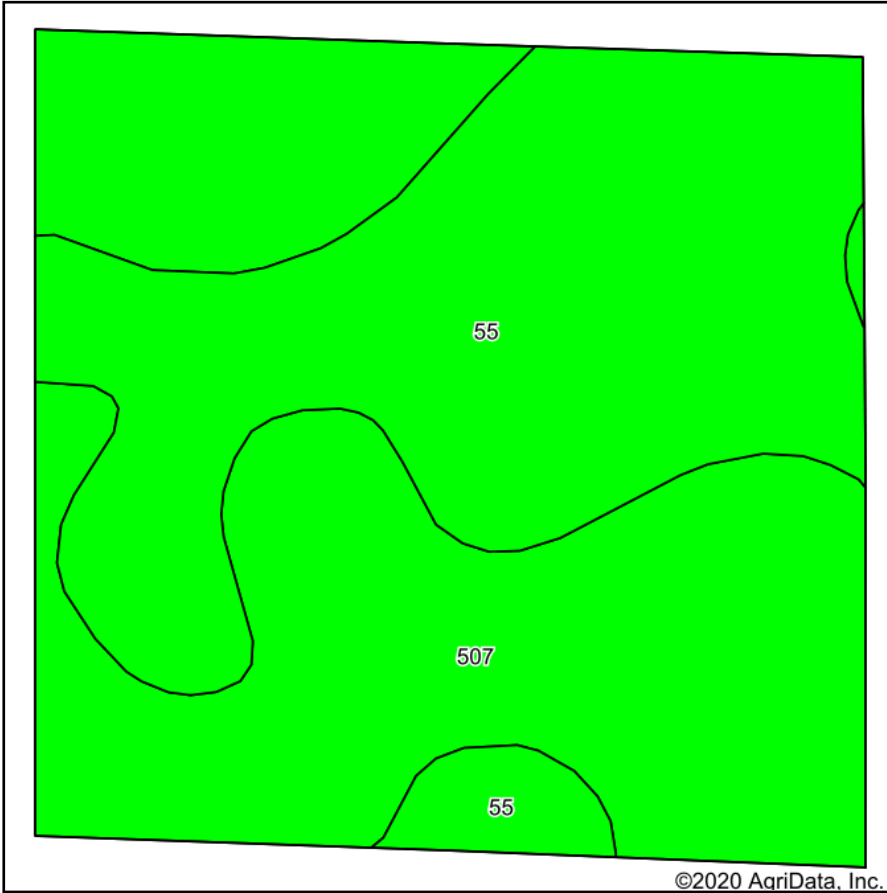
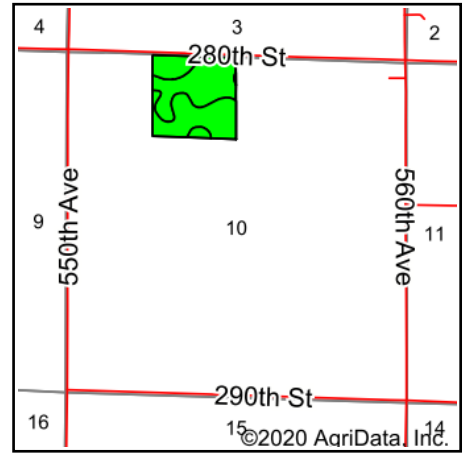


Soils Map



Soils data provided by USDA and NRCS.



State: **Iowa**
 County: **Palo Alto**
 Location: **10-97N-31W**
 Township: **Independence**
 Acres: **37.17**
 Date: **12/16/2020**

MIDWEST LAND & REAL ESTATE, INC
 712-262-3110 **MANAGEMENT**

Maps Provided By:

 CUSTOMIZED ONLINE MAPPING
 © AgriData, Inc. 2020 www.AgriDataInc.com



Code	Soil Description	Acres	Percent of field	CSR2 Legend	Non-Irr Class *c	CSR2**	CSR
507	Canisteo clay loam, 0 to 2 percent slopes	19.69	53.0%		llw	84	74
55	Nicollet clay loam, 1 to 3 percent slopes	17.48	47.0%		lw	89	84
Weighted Average						86.4	78.7

**IA has updated the CSR values for each county to CSR2.
 *c: Using Capabilities Class Dominant Condition Aggregation Method
 Soils data provided by USDA and NRCS.