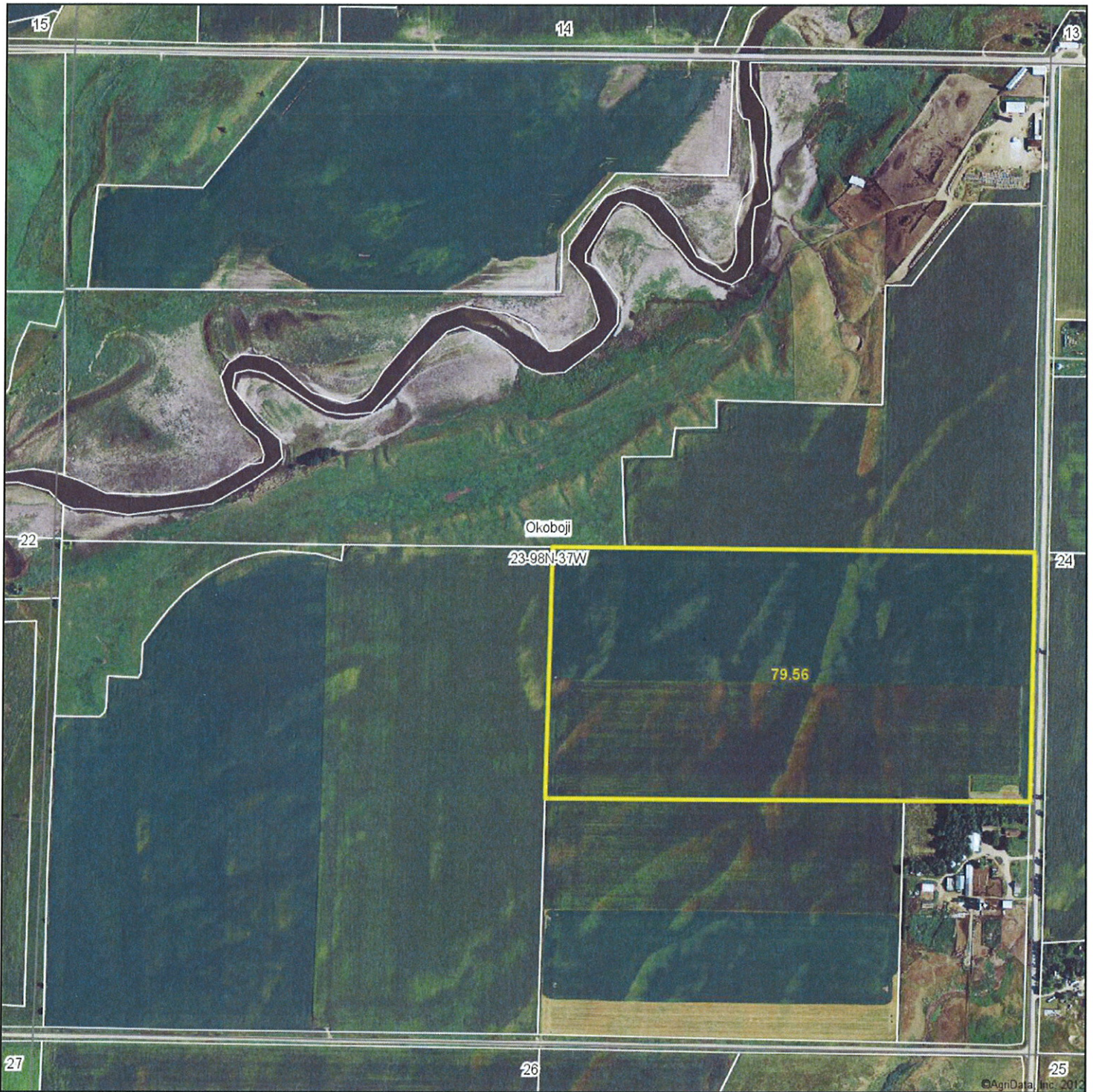


Parcel A
Aerial Map



MIDWEST LAND
712-262-3110 MANAGEMENT

Maps provided by:



©AgriData, Inc. 2012
www.AgriDataInc.com

23-98N-37W
Dickinson County
Iowa

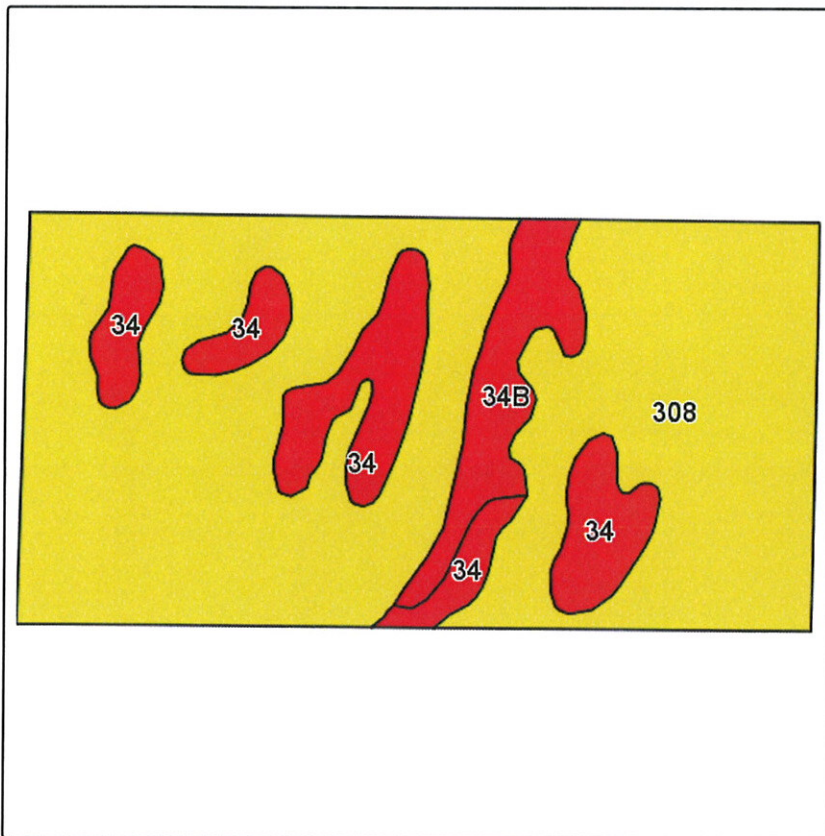
map center: 43° 17' 29.83, 95° 10' 47.56
scale: 8765



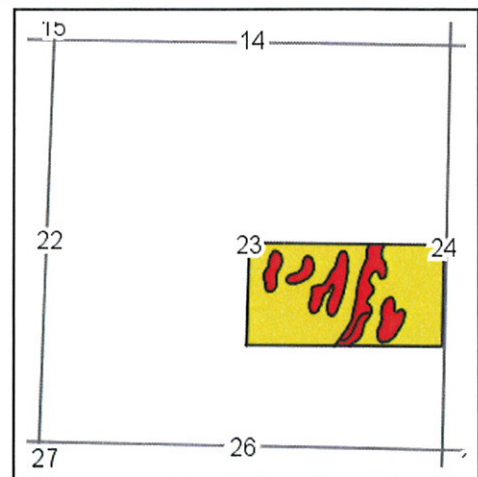
2/7/2013

Field borders provided by Farm Service Agency as of 5/21/2008. Aerial photography provided by Aerial Photography Field Office.

Parcel A
Soils Map-CSR(as of 1/21/12)



Field borders provided by Farm Service Agency as of 5/21/2008.
Soils data provided by USDA and NRCS.



State: Iowa
County: Dickinson
Location: 23-98N-37W
Township: Okoboji
Acres: 79.6
Date: 2/7/2013

& REAL ESTATE, INC
MIDWEST LAND
712-262-3110 MANAGEMENT



Maps provided by:



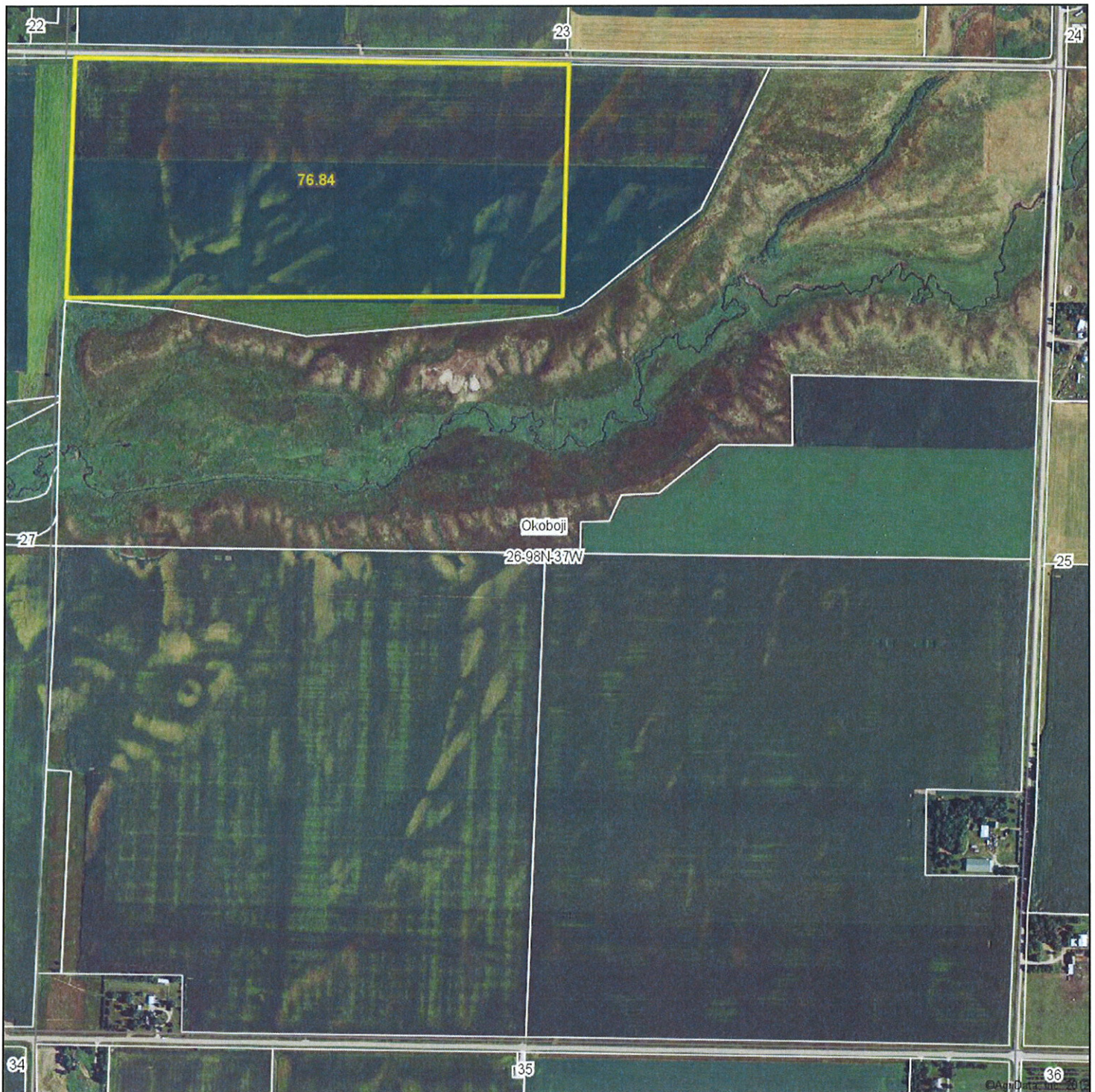
©AgriData, Inc 2012
www.AgriDataInc.com

| Code | Soil Description | Acres | Percent of field | CSR Legend | Non-Irr Class | CSR* | Corn | Soybeans |
|------------------|---|-------|------------------|------------|---------------|------|------|----------|
| 308 | Wadena loam, 0 to 2 percent slopes | 62.7 | 78.8% | | IIs | 43 | 143 | 46 |
| 34 | Estherville sandy loam, 0 to 2 percent slopes | 11.7 | 14.8% | | IIIs | 15 | 105 | 34 |
| 34B | Estherville sandy loam, 2 to 5 percent slopes | 5.2 | 6.5% | | IIIs | 15 | 105 | 34 |
| Weighted Average | | | | | | 37.1 | 135 | 43.5 |

Note: ALL soils information on this page is dated 1/21/2012

*CSR ratings will be available for a limited time to aid in the transition to CSR2.

Parcel B
Aerial Map



MIDWEST LAND
712-262-3110 MANAGEMENT

Maps provided by:



©AgriData, Inc. 2012
www.AgriDataInc.com

26-98N-37W
Dickinson County
Iowa

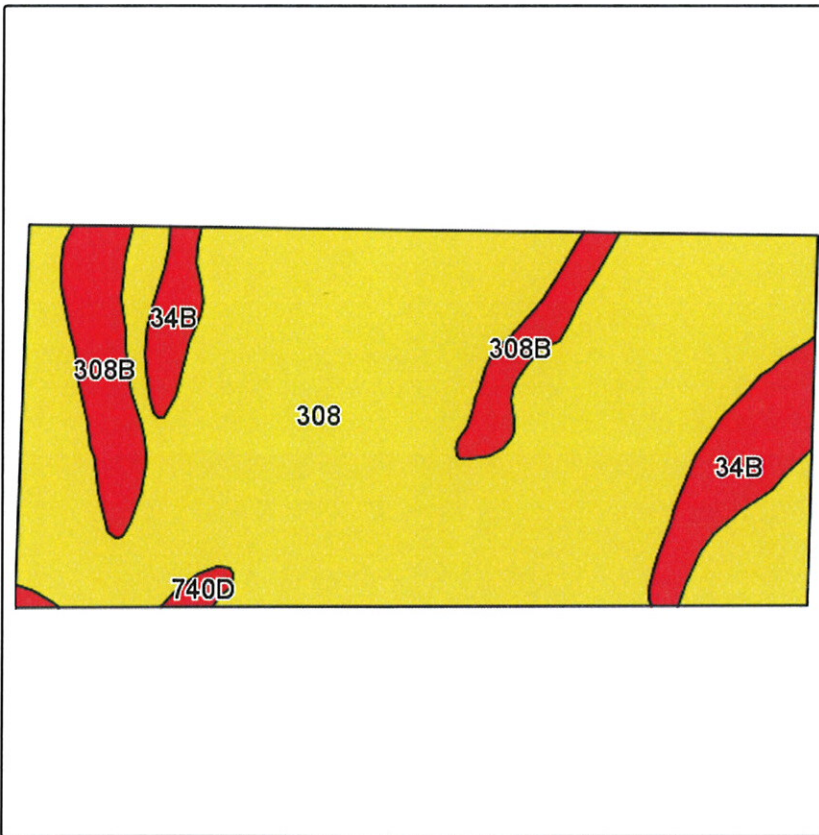
map center: 43° 16' 37.87, 95° 10' 47.64
scale: 8782



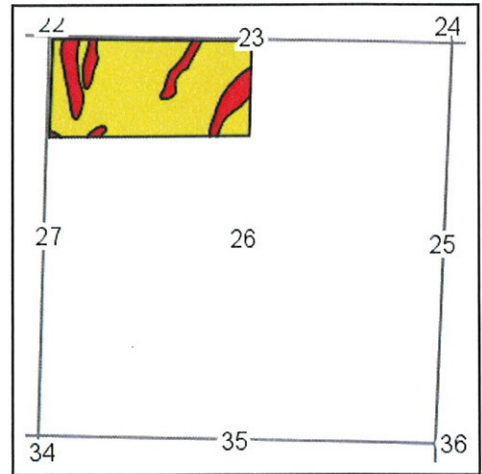
2/7/2013

Field borders provided by Farm Service Agency as of 5/21/2008. Aerial photography provided by Aerial Photography Field Office.

Parcel B
Soils Map-CSR(as of 1/21/12)



Field borders provided by Farm Service Agency as of 5/21/2008.
Soils data provided by USDA and NRCS.



State: Iowa
County: Dickinson
Location: 26-98N-37W
Township: Okoboji
Acres: 76.8
Date: 2/7/2013

& REAL ESTATE, INC
Midwest Land
712-262-3110 MANAGEMENT



Maps provided by:



©AgriData, Inc 2012
www.AgriDataInc.com

| Code | Soil Description | Acres | Percent of field | CSR Legend | Non-Irr Class | CSR* | Corn | Soybeans |
|------------------|--|-------|------------------|------------|---------------|------|-------|----------|
| 308 | Wadena loam, 0 to 2 percent slopes | 63.5 | 82.7% | | Ils | 43 | 143 | 46 |
| 308B | Wadena loam, 2 to 5 percent slopes | 6.6 | 8.5% | | Ile | 36 | 134 | 43 |
| 34B | Estherville sandy loam, 2 to 5 percent slopes | 6.1 | 8.0% | | IIIs | 15 | 105 | 34 |
| 740D | Hawick gravelly sandy loam, 9 to 14 percent slopes | 0.6 | 0.8% | | IVs | 11 | 100 | 32 |
| Weighted Average | | | | | | 39.9 | 138.9 | 44.7 |

Note: ALL soils information on this page is dated 1/21/2012

*CSR ratings will be available for a limited time to aid in the transition to CSR2.