

**Buena Vista County, IA**  
**7.5 A M/L**

# **Wean to Finish Facility For Sale**



# Wean to Finish Facility For Sale

## Facility Overview

	Building 1—2	Updates	Buildings 3	Updates
<b>Building Type:</b>	Wean Finish	2016-WF upgrade	Wean Finish	2016-WF upgrade
<b>Year Built:</b>	1992	2019-Complete Building Structure	1994	2016-New Roof Steel & Chimneys
<b>Pig Spaces:</b>	2,200		1,100	
<b>Building Dimensions:</b>	47' 6" x 200' ID		47' 6" x 200' ID	
<b>Number of Rooms:</b>	1		1	
<b>Pens per Room:</b>	22 - 16' x 21'8" Pens 6 - 8' x 21' 8"Pens	2016-Aisle Panels	22 - 16' x 21'8" Pens 6 - 8' x 21'8" Pens	2016-Aisle Panels
<b>Pit Depth:</b>	Shallow w/Scraper		Shallow w/Scraper	
<b>Ventilation:</b>	Natural - Chimney		Natural - Chimney	
<b>Ventilation Controller:</b>	EXPERT N	2016-New Controllers	EXPERT N	2016-New Controllers
<b>Ceiling:</b>	Open Rafter		Open Rafter	
<b>Flooring:</b>	Concrete with 8' Concrete Slat		Concrete with 8' Concrete Slat	
<b>Feed System:</b>	TO/TT Flex		TO/TT Flex	
<b>Feeders:</b>	(24)SS 36"x50" Double (2)SS 36"x50" Single		(24)SS 36"x50" Double (2)SS 36"x50" Single	
<b>Waterers:</b>	SS Cups	2016-New	SS Cups	2016-New
<b>Load Out:</b>	Portable		Portable	
<b>Office:</b>	20'x24' Site Office w/Shower and Laundry Facilities			
<b>Taxes:</b>	\$2,592.00			
<b>Price:</b>				

**Buena Vista County, IA**  
**7.5 A M/L**

# **Wean to Finish Facility For Sale**

## **Photos**



**WF Buildings**



**Building Entrance/Loadout**



**Exterior Sidewall**



**Feed Bins**



**Site Driveway**



**South Building**

**Buena Vista County, IA**  
**7.5 A M/L**

# **Wean to Finish Facility For Sale**

## **Photos**



**North Building Endwall**



**North Building Interior**



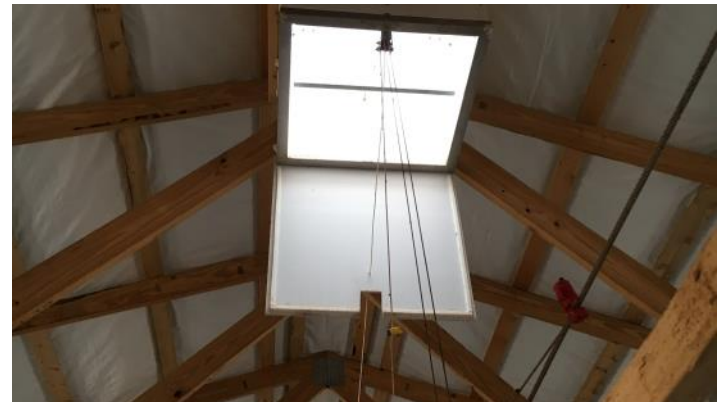
**SS Feeder**



**South Buildings Endwall**



**South Buildings Interior**



**Chimney Vent**

**Photos**



**Room Interior**



**Building Controller**



**Office Laundry**



**Office Interior**



**Driveway**



**Lagoon**

**Buena Vista County, IA**  
**7.5 A M/L**

# **Wean to Finish Facility For Sale**

---

**Notes**