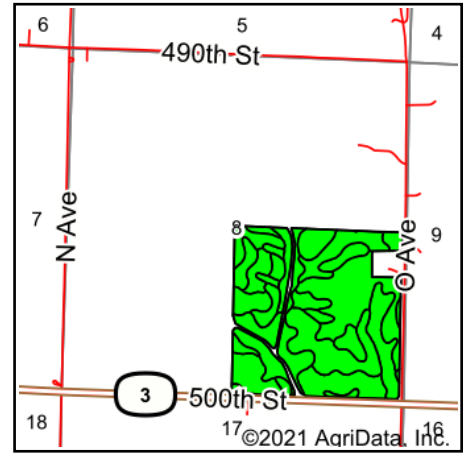
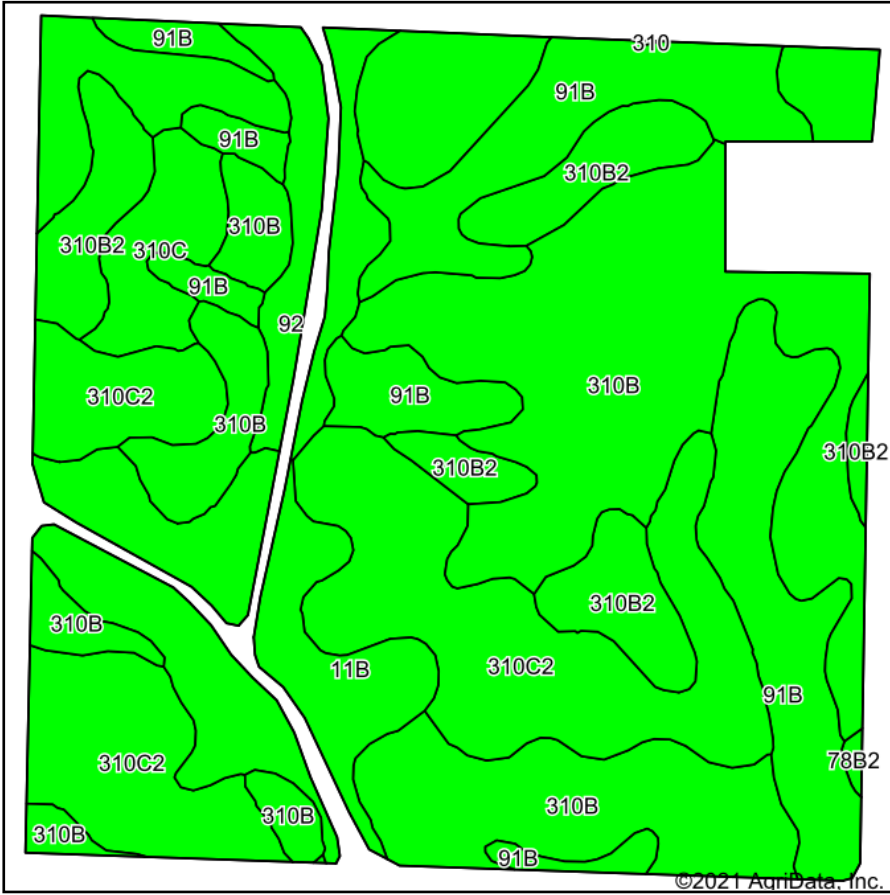


Soils Map



State: **Iowa**
 County: **Cherokee**
 Location: **8-92N-40W**
 Township: **Cherokee**
 Acres: **145.98**
 Date: **5/19/2021**

& REAL ESTATE, INC
MIDWEST LAND
 712-262-3110 MANAGEMENT
 Maps Provided By:

 CUSTOMIZED ONLINE MAPPING
 © AgriData, Inc. 2021 www.AgriDataInc.com



Area Symbol: IA035, Soil Area Version: 30

| Code | Soil Description | Acres | Percent of field | CSR2 Legend | Non-Irr Class *c | CSR2** | CSR |
|-------------------------|---|-------|------------------|-------------|------------------|-------------|-------------|
| 310B | Galva silty clay loam, 2 to 5 percent slopes | 54.59 | 37.4% | | Ile | 95 | 71 |
| 310C2 | Galva silty clay loam, 5 to 9 percent slopes, eroded | 29.14 | 20.0% | | IIle | 84 | 54 |
| 91B | Primghar silty clay loam, 2 to 5 percent slopes | 24.65 | 16.9% | | Ile | 95 | 79 |
| 11B | Colo-Judson silty clay loams, 0 to 5 percent slopes, occasionally flooded | 15.06 | 10.3% | | IIw | 80 | 59 |
| 310B2 | Galva silty clay loam, 2 to 5 percent slopes, eroded | 11.91 | 8.2% | | Ile | 90 | 69 |
| 92 | Marcus silty clay loam, 0 to 2 percent slopes | 6.34 | 4.3% | | IIw | 94 | 76 |
| 310C | Galva silty clay loam, 5 to 9 percent slopes | 4.08 | 2.8% | | IIle | 87 | 56 |
| 78B2 | Sac silty clay loam, 2 to 5 percent slopes, eroded | 0.21 | 0.1% | | Ile | 86 | 65 |
| Weighted Average | | | | | | 90.6 | 67.3 |

**IA has updated the CSR values for each county to CSR2.

*c: Using Capabilities Class Dominant Condition Aggregation Method
 Soils data provided by USDA and NRCS.