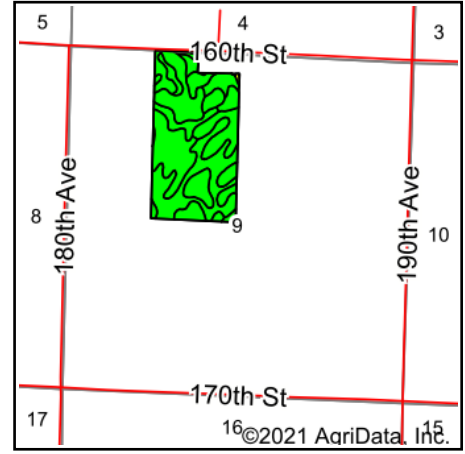
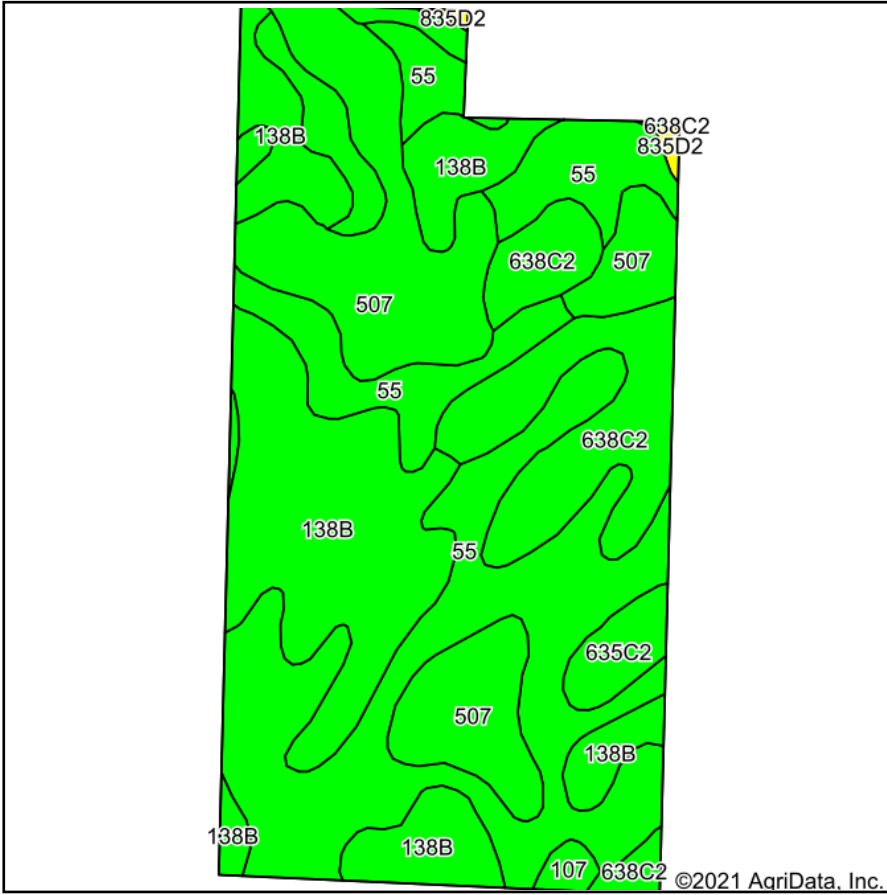


# Soils Map



State: **Iowa**  
 County: **Dickinson**  
 Location: **9-99N-37W**  
 Township: **Lakeville**  
 Acres: **72.6**  
 Date: **6/1/2021**

& REAL ESTATE, INC  
**MIDWEST LAND**  
 712-262-3110 MANAGEMENT  
 Maps Provided By:  
  
 CUSTOMIZED ONLINE MAPPING  
 © AgriData, Inc. 2021 www.AgriDataInc.com

Soils data provided by USDA and NRCS.

Area Symbol: IA059, Soil Area Version: 30

| Code                    | Soil Description   | Acres | Percent of field | CSR2 Legend | Non-Irr Class *c | CSR2**      | CSR         |
|-------------------------|--|-------|------------------|-------------|------------------|-------------|-------------|
| 55                      | Nicollet clay loam, 1 to 3 percent slopes                          | 25.75 | 35.5%            | 80+         | Iw               | 89          | 73          |
| 138B                    | Clarion loam, 2 to 6 percent slopes                                | 19.51 | 26.9%            | 80+         | Ile              | 89          | 73          |
| 507                     | Canisteo clay loam, 0 to 2 percent slopes                          | 13.99 | 19.3%            | 80+         | IIw              | 84          | 71          |
| 638C2                   | Clarion-Storden complex, 6 to 10 percent slopes, moderately eroded | 11.11 | 15.3%            | 80+         | IIIe             | 75          | 52          |
| 635C2                   | Belview-Storden complex, 5 to 9 percent slopes, moderately eroded  | 1.51  | 2.1%             | 80+         | IIIe             | 66          | 18          |
| 107                     | Webster clay loam, 0 to 2 percent slopes                           | 0.46  | 0.6%             | 80+         | IIw              | 86          | 70          |
| 835D2                   | Omsrud-Storden complex, 10 to 16 percent slopes, moderately eroded | 0.27  | 0.4%             | 70-79       | IVe              | 53          | 35          |
| <b>Weighted Average</b> |  |       |                  |             |                  | <b>85.3</b> | <b>68.1</b> |

\*\*IA has updated the CSR values for each county to CSR2.

\*c: Using Capabilities Class Dominant Condition Aggregation Method  
 Soils data provided by USDA and NRCS.