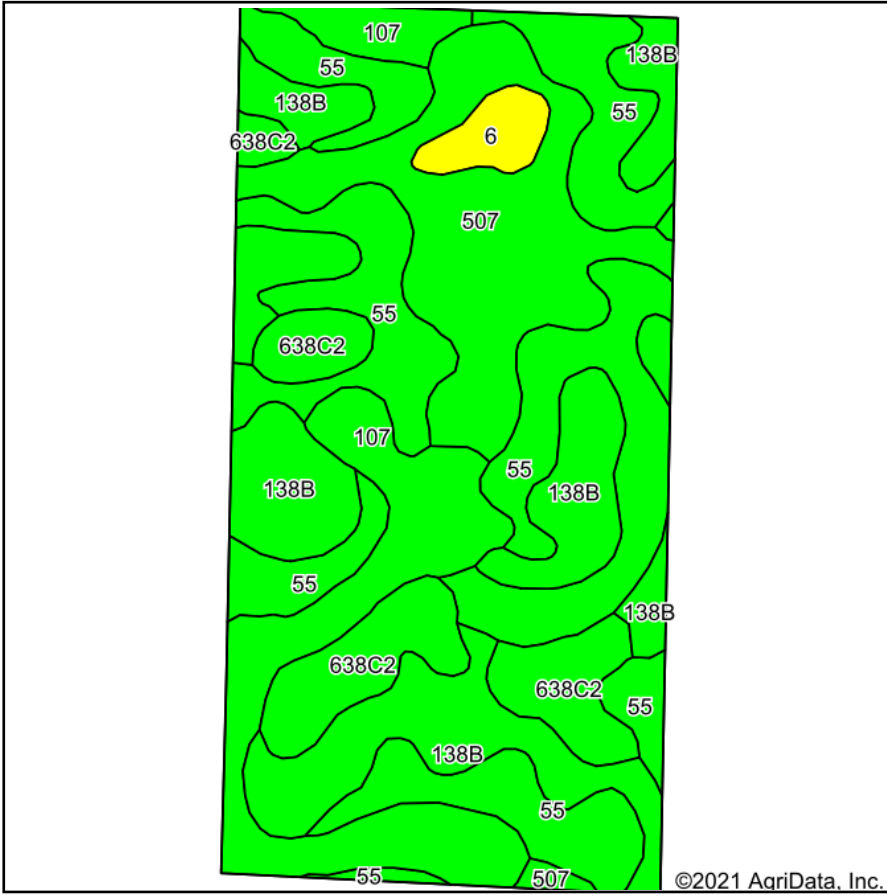
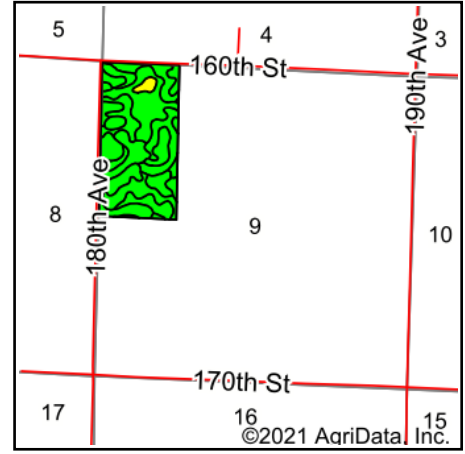


Soils Map



Soils data provided by USDA and NRCS.



State: **Iowa**
 County: **Dickinson**
 Location: **9-99N-37W**
 Township: **Lakeville**
 Acres: **76.33**
 Date: **6/11/2021**

& REAL ESTATE, INC
MIDWEST LAND
 712-262-3110 MANAGEMENT
 Maps Provided By:

 CUSTOMIZED ONLINE MAPPING
 © AgriData, Inc. 2021 www.AgriDataInc.com



Area Symbol: IA059, Soil Area Version: 30

Code	Soil Description	Acres	Percent of field	CSR2 Legend	Non-Irr Class *c	CSR2**	CSR
55	Nicollet clay loam, 1 to 3 percent slopes	24.86	32.6%		lw	89	73
138B	Clarion loam, 2 to 6 percent slopes	18.23	23.9%		lle	89	73
507	Canisteo clay loam, 0 to 2 percent slopes	12.42	16.3%		llw	84	71
107	Webster clay loam, 0 to 2 percent slopes	11.41	14.9%		llw	86	70
638C2	Clarion-Storden complex, 6 to 10 percent slopes, moderately eroded	7.88	10.3%		llle	75	52
6	Okoboji silty clay loam, 0 to 1 percent slopes	1.53	2.0%		lllw	59	43
Weighted Average						85.7	69.5

**IA has updated the CSR values for each county to CSR2.

*c: Using Capabilities Class Dominant Condition Aggregation Method
 Soils data provided by USDA and NRCS.