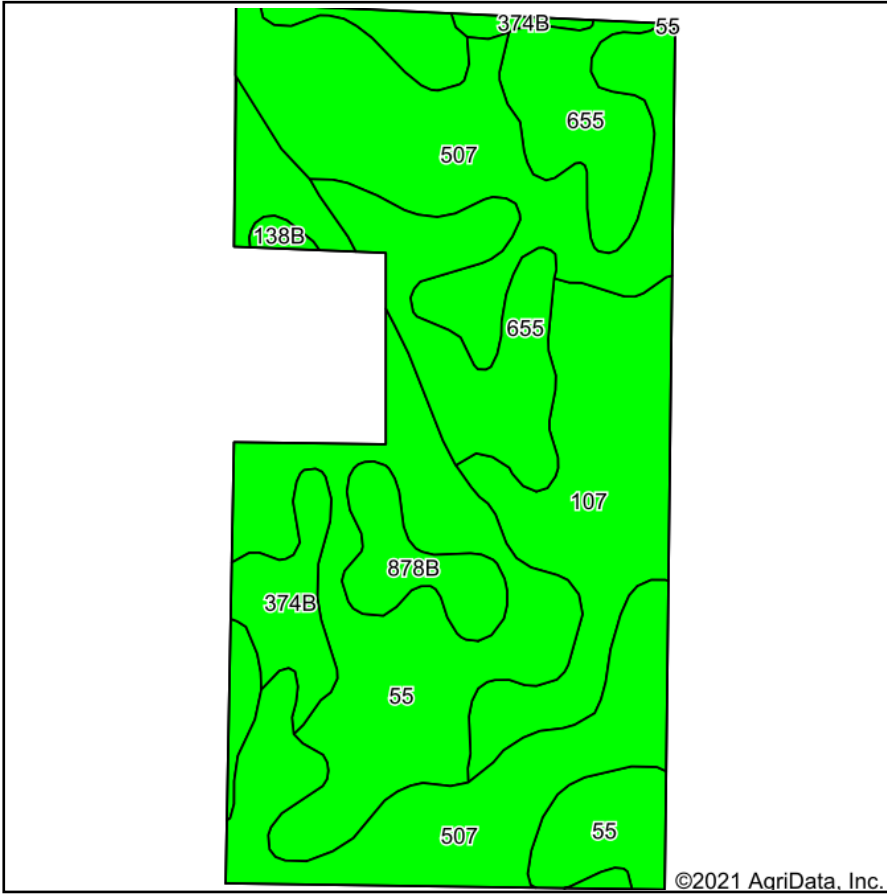
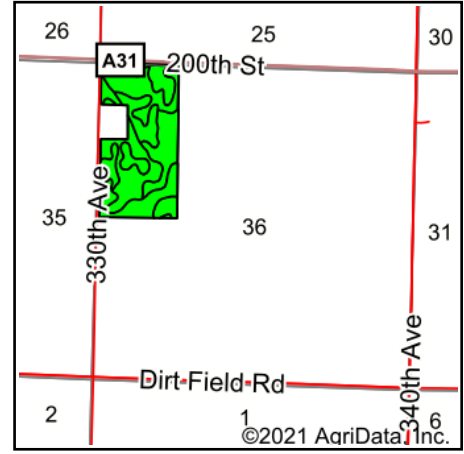


Soils Map



Soils data provided by USDA and NRCS.



State: **Iowa**
 County: **Dickinson**
 Location: **36-99N-35W**
 Township: **Richland**
 Acres: **70.89**
 Date: **6/22/2021**

MIDWEST LAND & REAL ESTATE, INC
 712-262-3110 MANAGEMENT

Maps Provided By:



© AgriData, Inc. 2021

www.AgriDataInc.com



Area Symbol: IA059, Soil Area Version: 30

Code	Soil Description	Acres	Percent of field	CSR2 Legend	Non-Irr Class *c	CSR2**	CSR
507	Canisteo clay loam, 0 to 2 percent slopes	22.91	32.3%		llw	84	71
55	Nicollet clay loam, 1 to 3 percent slopes	18.99	26.8%		lw	89	73
655	Crippin loam, 1 to 3 percent slopes	12.30	17.4%		le	91	71
107	Webster clay loam, 0 to 2 percent slopes	10.47	14.8%		llw	86	70
374B	Okabena silty clay loam, 1 to 5 percent slopes	3.17	4.5%		lw	91	73
878B	Ocheyedan loam, 2 to 5 percent slopes	2.73	3.9%		lle	92	74
138B	Clarion loam, 2 to 6 percent slopes	0.32	0.5%		lle	89	73
Weighted Average						87.5	71.6

**IA has updated the CSR values for each county to CSR2.

*c: Using Capabilities Class Dominant Condition Aggregation Method
 Soils data provided by USDA and NRCS.