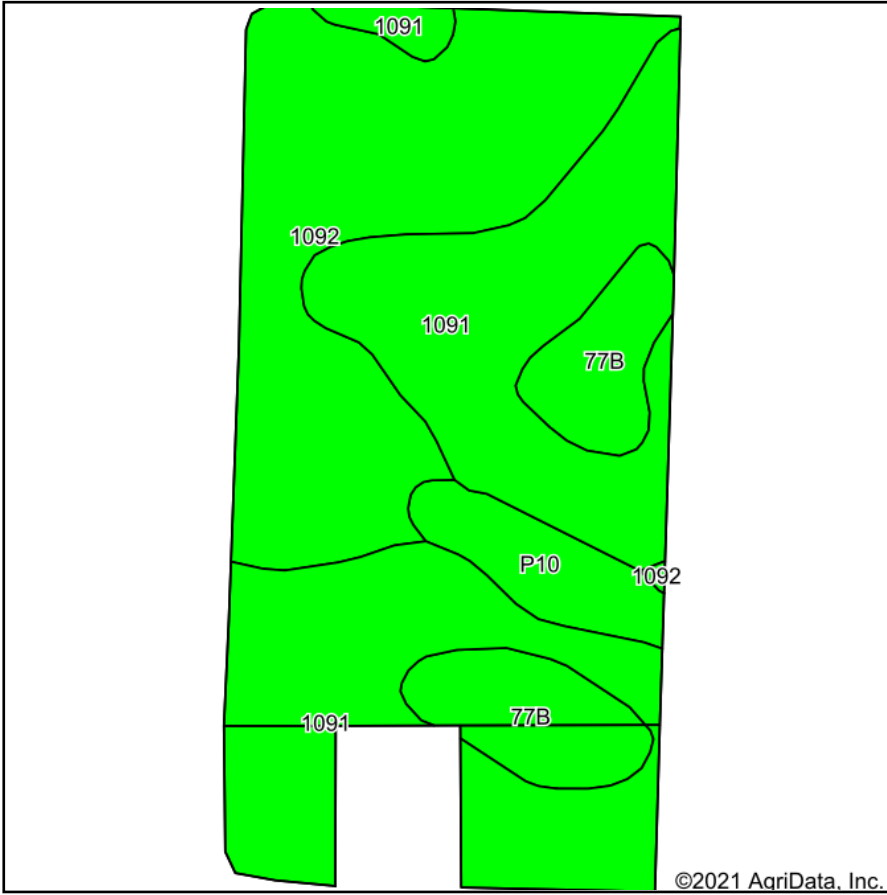
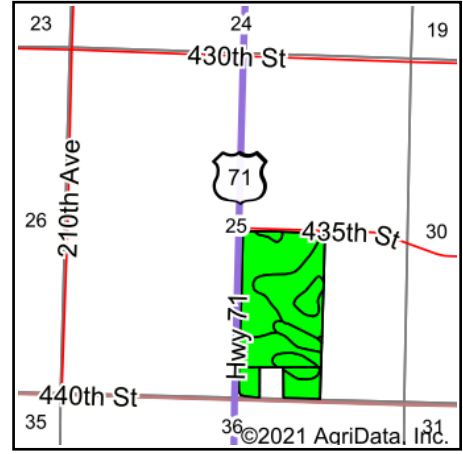


# Soils Map



Soils data provided by USDA and NRCS.

©2021 AgriData, Inc.



State: **Iowa**  
 County: **Clay**  
 Location: **25-95N-37W**  
 Township: **Lincoln**  
 Acres: **70.16**  
 Date: **8/12/2021**

& REAL ESTATE, INC  
**MIDWEST LAND**  
 712-262-3110 MANAGEMENT

Maps Provided By:

© AgriData, Inc. 2021 [www.AgriDataInc.com](http://www.AgriDataInc.com)

Area Symbol: IA041, Soil Area Version: 30

Code	Soil Description	Acres	Percent of field	CSR2 Legend	Non-Irr Class *c	CSR2**	CSR
1091	McCreath silty clay loam, 0 to 2 percent slopes	33.90	48.3%		lw	98	83
1092	Gillett Grove silty clay loam, 0 to 2 percent slopes	24.13	34.4%		llw	94	78
77B	Sac silty clay loam, loam substratum, 2 to 5 percent slopes	8.24	11.7%		lle	95	71
P10	Afton silty clay loam, Sheldon creek formation, 0 to 2 percent slopes, occasionally flooded	3.89	5.5%		llw	82	
<b>Weighted Average</b>						<b>95.4</b>	<b>*.</b>

\*\*IA has updated the CSR values for each county to CSR2.

\*- CSR weighted average cannot be calculated on the current soils data, use prior data version for csr values.

\*c: Using Capabilities Class Dominant Condition Aggregation Method

Soils data provided by USDA and NRCS.