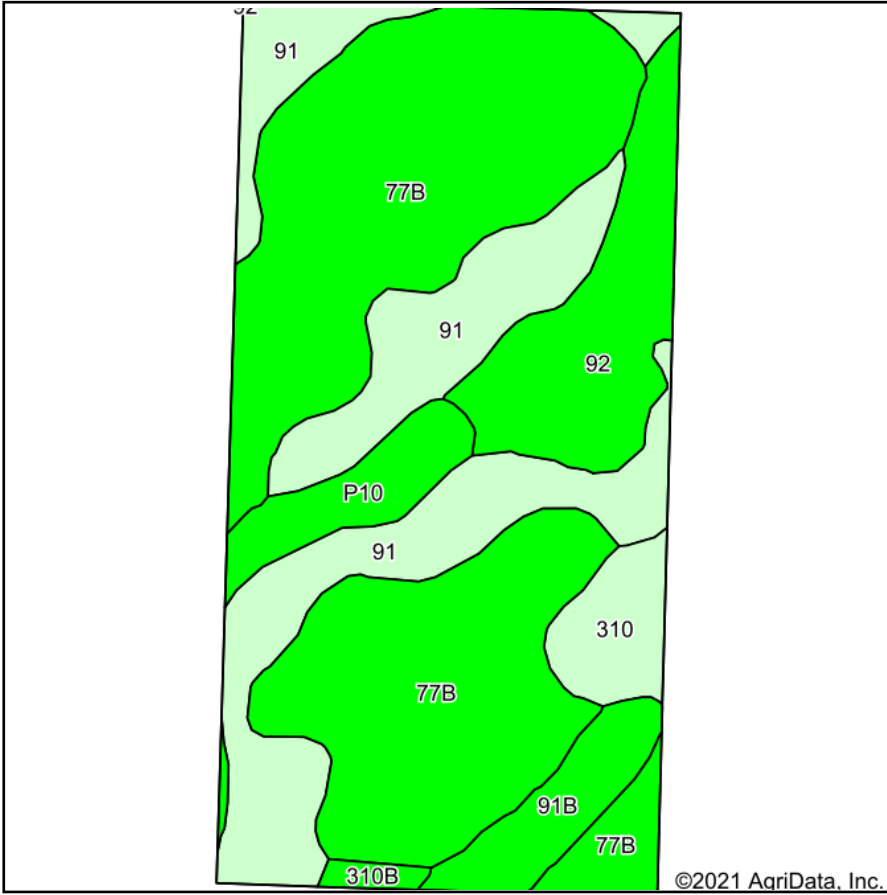
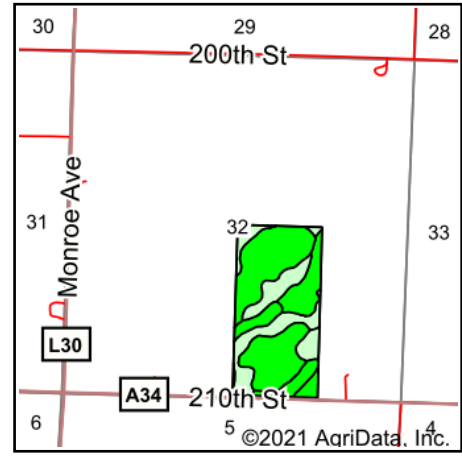


Soils Map



Soils data provided by USDA and NRCS.




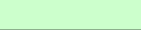





State: **Iowa**
 County: **Osceola**
 Location: **32-99N-42W**
 Township: **Holman**
 Acres: **80.73**
 Date: **9/20/2021**

& REAL ESTATE, INC
MIDWEST LAND
 712-262-3110 MANAGEMENT
 Maps Provided By:

 CUSTOMIZED ONLINE MAPPING
 © AgriData, Inc. 2021 www.AgriDataInc.com



Area Symbol: IA143, Soil Area Version: 31

Code	Soil Description	Acres	Percent of field	CSR2 Legend	Non-Irr Class *c	CSR2**	CSR
77B	Sac silty clay loam, loam substratum, 2 to 5 percent slopes	39.99	49.5%		Ile	95	77
91	Primghar silty clay loam, 0 to 2 percent slopes	20.83	25.8%		Iw	100	86
92	Marcus silty clay loam, 0 to 2 percent slopes	8.88	11.0%		Ilw	94	80
P10	Afton silty clay loam, Sheldon creek formation, 0 to 2 percent slopes, occasionally flooded	3.72	4.6%		Ilw	82	
91B	Primghar silty clay loam, 2 to 5 percent slopes	3.64	4.5%		Ile	95	81
310	Galva silty clay loam, 0 to 2 percent slopes	3.13	3.9%		I	100	86
310B	Galva silty clay loam, 2 to 5 percent slopes	0.54	0.7%		Ile	95	81
Weighted Average						95.8	*-

**IA has updated the CSR values for each county to CSR2.

*- CSR weighted average cannot be calculated on the current soils data, use prior data version for csr values.

*c: Using Capabilities Class Dominant Condition Aggregation Method

Soils data provided by USDA and NRCS.