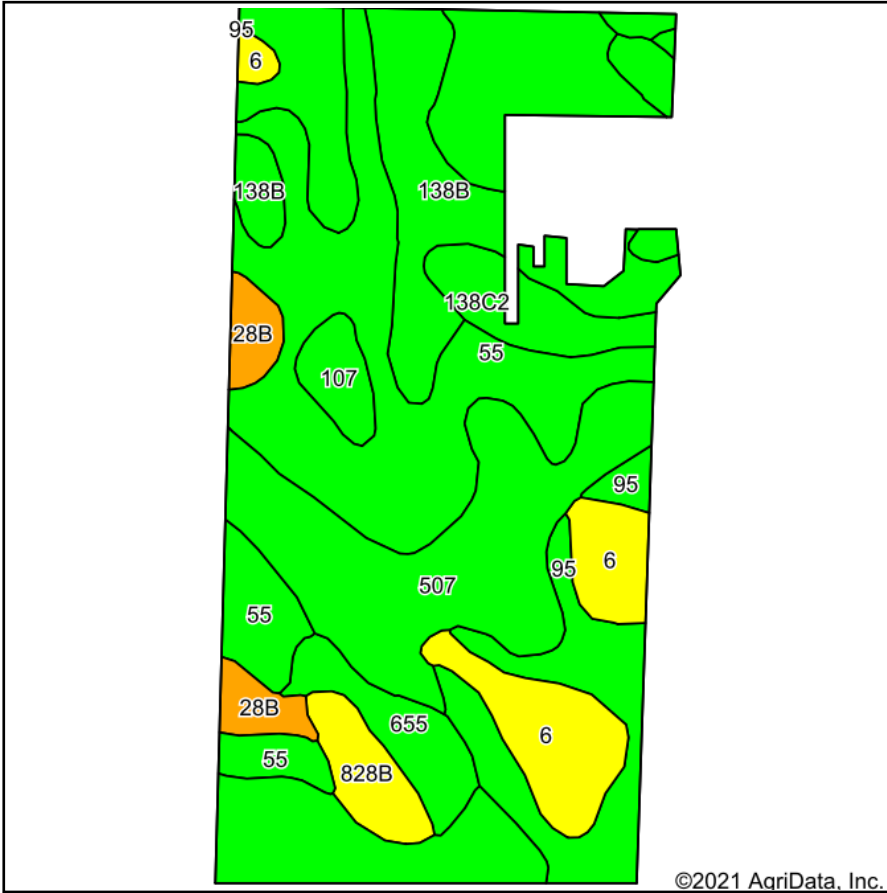
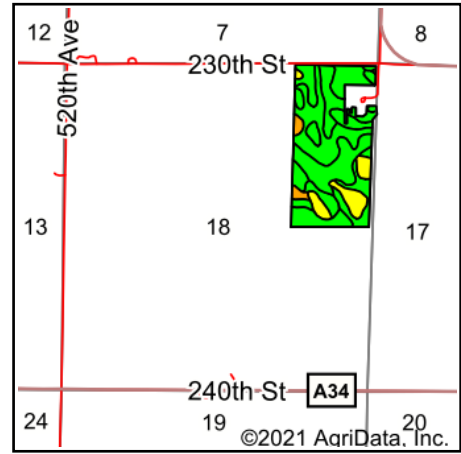


Soils Map



Soils data provided by USDA and NRCS.



State: **Iowa**
 County: **Emmet**
 Location: **18-98N-31W**
 Township: **Denmark**
 Acres: **71.15**
 Date: **9/21/2021**

& REAL ESTATE, INC
MIDWEST LAND
 712-262-3110 MANAGEMENT
 Maps Provided By:

 CUSTOMIZED ONLINE MAPPING
 © AgriData, Inc. 2021 www.AgriDataInc.com



Area Symbol: IA063, Soil Area Version: 30

| Code | Soil Description | Acres | Percent of field | CSR2 Legend | Non-Irr Class *c | CSR2** | CSR |
|-------------------------|---|-------|------------------|-------------|------------------|-------------|-------------|
| 55 | Nicollet clay loam, 1 to 3 percent slopes | 21.67 | 30.5% | | Iw | 89 | 82 |
| 507 | Canisteo clay loam, 0 to 2 percent slopes | 19.73 | 27.7% | | IIw | 84 | 73 |
| 138B | Clarion loam, 2 to 6 percent slopes | 8.11 | 11.4% | | Ile | 89 | 74 |
| 95 | Harps clay loam, 0 to 2 percent slopes | 5.79 | 8.1% | | IIw | 72 | 57 |
| 6 | Okoboji silty clay loam, 0 to 1 percent slopes | 5.55 | 7.8% | | IIIw | 59 | 53 |
| 655 | Crippin loam, 1 to 3 percent slopes | 2.53 | 3.6% | | Ie | 91 | 77 |
| 138C2 | Clarion loam, 6 to 10 percent slopes, moderately eroded | 2.50 | 3.5% | | IIIe | 83 | 59 |
| 828B | Zenor sandy loam, 2 to 5 percent slopes | 1.97 | 2.8% | | IIIe | 54 | 45 |
| 28B | Dickman sandy loam, 2 to 6 percent slopes | 1.94 | 2.7% | | IIIe | 20 | 33 |
| 107 | Webster clay loam, 0 to 2 percent slopes | 1.36 | 1.9% | | IIw | 86 | 77 |
| Weighted Average | | | | | | 80.8 | 70.9 |

**IA has updated the CSR values for each county to CSR2.

*c: Using Capabilities Class Dominant Condition Aggregation Method
 Soils data provided by USDA and NRCS.