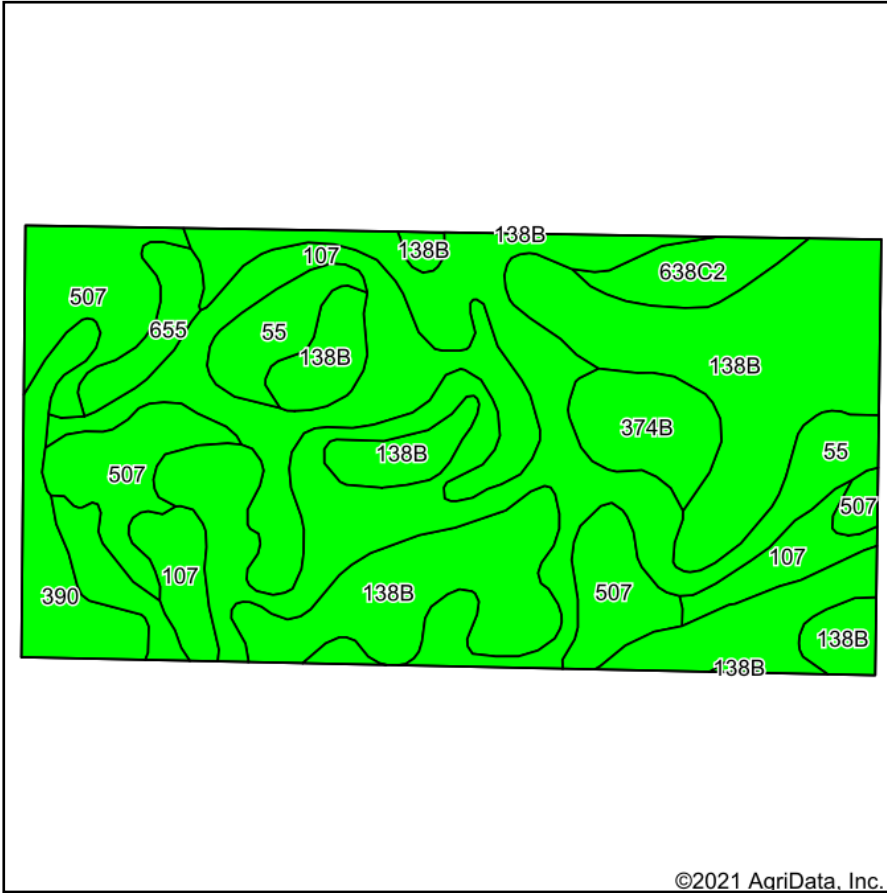
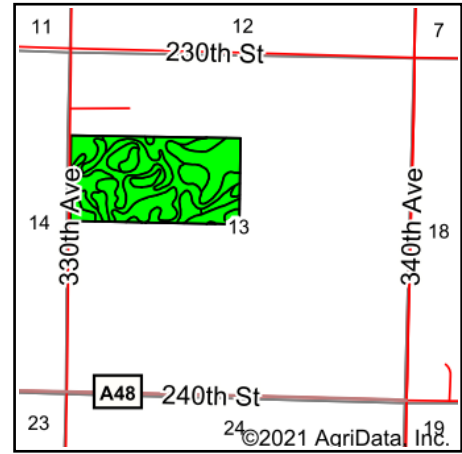


Soils Map



Soils data provided by USDA and NRCS.



State: **Iowa**
 County: **Dickinson**
 Location: **13-98N-35W**
 Township: **Lloyd**
 Acres: **79**
 Date: **9/28/2021**

MIDWEST LAND & REAL ESTATE, INC
 712-262-3110 MANAGEMENT

Maps Provided By:

 CUSTOMIZED ONLINE MAPPING
 © AgriData, Inc. 2021 www.AgriDataInc.com



Area Symbol: IA059, Soil Area Version: 30

Code	Soil Description	Acres	Percent of field	CSR2 Legend	Non-Irr Class *c	CSR2**	CSR
55	Nicollet clay loam, 1 to 3 percent slopes	25.44	32.2%		Iw	89	73
138B	Clarion loam, 2 to 6 percent slopes	21.89	27.7%		Ile	89	73
107	Webster clay loam, 0 to 2 percent slopes	11.84	15.0%		Ilw	86	70
507	Canisteo clay loam, 0 to 2 percent slopes	9.67	12.2%		Ilw	84	71
390	Waldorf silty clay loam, 0 to 2 percent slopes	3.46	4.4%		Ilw	69	59
374B	Okabena silty clay loam, 1 to 5 percent slopes	3.00	3.8%		Iw	91	73
638C2	Clarion-Storden complex, 6 to 10 percent slopes, moderately eroded	2.07	2.6%		IIIle	75	52
655	Crippin loam, 1 to 3 percent slopes	1.63	2.1%		Ile	91	71
Weighted Average						86.8	71.1

**IA has updated the CSR values for each county to CSR2.

*c: Using Capabilities Class Dominant Condition Aggregation Method

Soils data provided by USDA and NRCS.