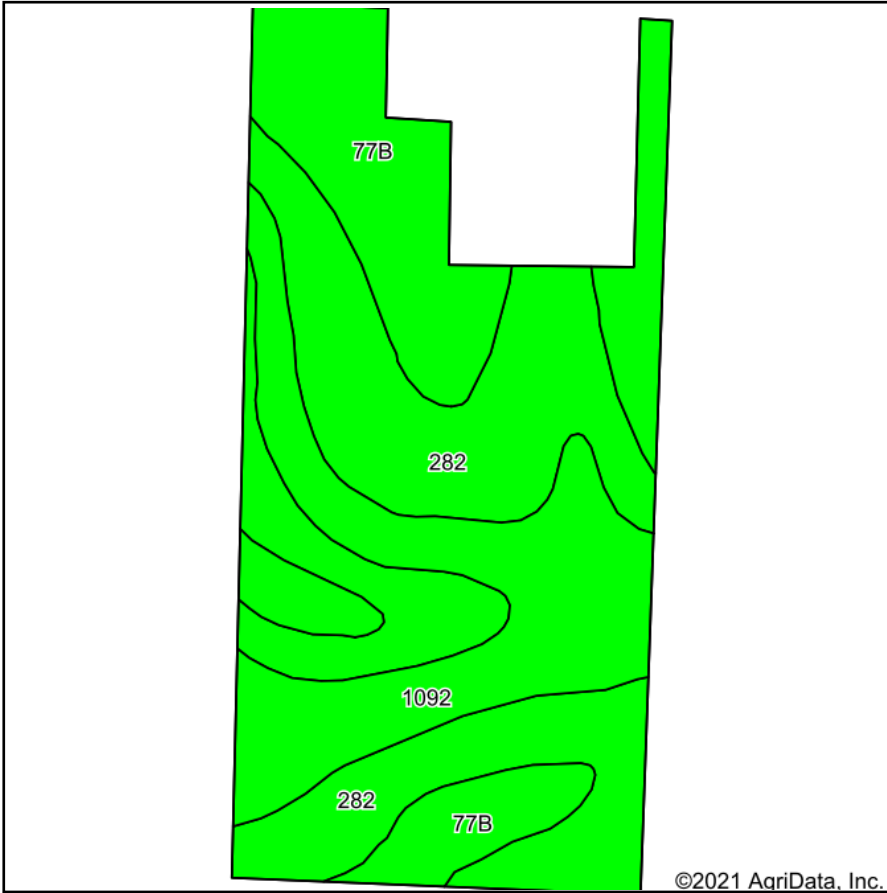
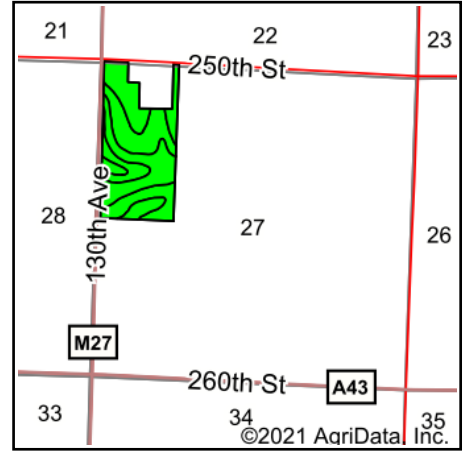


# Soils Map



Soils data provided by USDA and NRCS.



State: **Iowa**  
 County: **Dickinson**  
 Location: **27-98N-38W**  
 Township: **Westport**  
 Acres: **63.5**  
 Date: **9/30/2021**

**MIDWEST LAND** & REAL ESTATE, INC  
 712-262-3110 MANAGEMENT  
 Maps Provided By:  
  
 CUSTOMIZED ONLINE MAPPING  
 © AgriData, Inc. 2021 www.AgriDataInc.com



Area Symbol: IA059, Soil Area Version: 30

| Code                    | Soil Description  | Acres | Percent of field | CSR2 Legend | Non-Irr Class *c | CSR2**      | CSR         |
|-------------------------|---|-------|------------------|-------------|------------------|-------------|-------------|
| 282                     | Ransom silty clay loam, 1 to 3 percent slopes               | 29.03 | 45.7%            |             | lw               | 95          | 78          |
| 77B                     | Sac silty clay loam, loam substratum, 2 to 5 percent slopes | 18.57 | 29.2%            |             | Ile              | 95          | 76          |
| 1092                    | Gillett Grove silty clay loam, 0 to 2 percent slopes        | 15.90 | 25.0%            |             | IIw              | 94          | 79          |
| <b>Weighted Average</b> |   |       |                  |             |                  | <b>94.7</b> | <b>77.7</b> |

\*\*IA has updated the CSR values for each county to CSR2.  
 \*c: Using Capabilities Class Dominant Condition Aggregation Method  
 Soils data provided by USDA and NRCS.