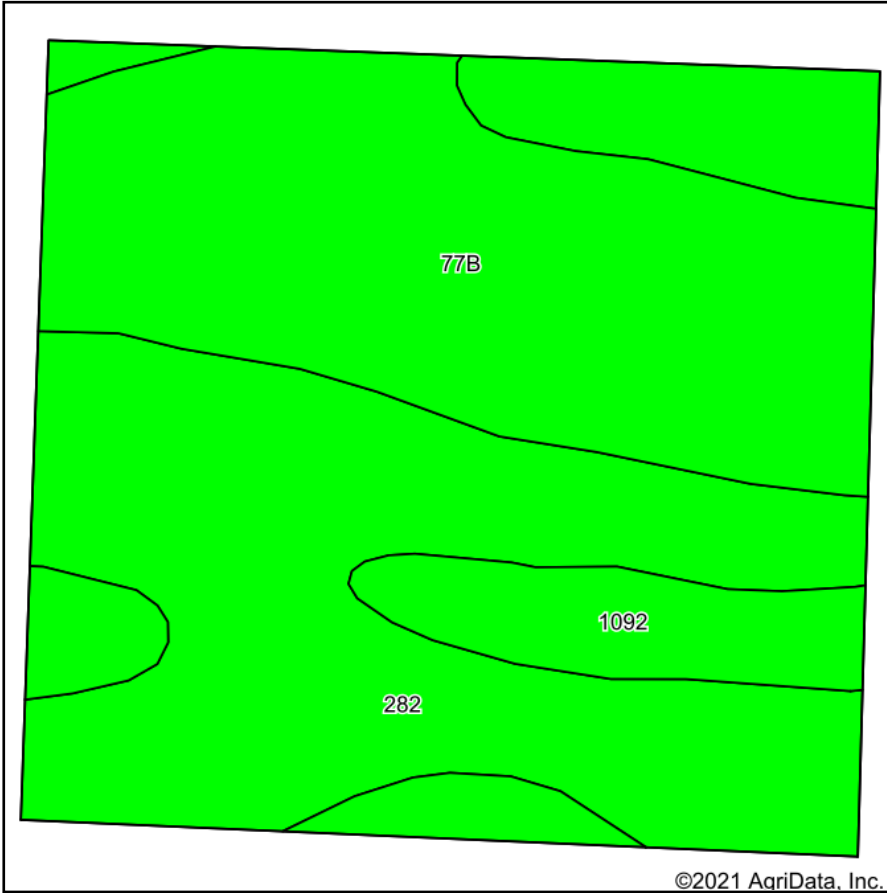
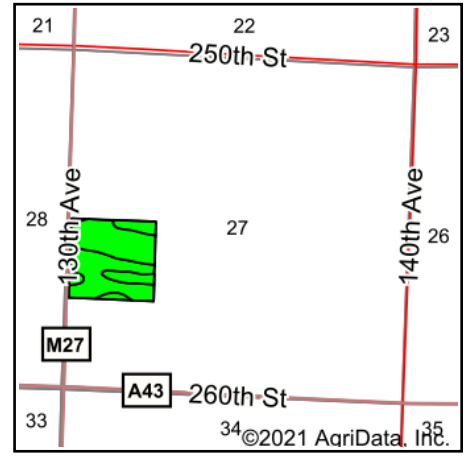


# Soils Map



Soils data provided by USDA and NRCS.






State: **Iowa**  
 County: **Dickinson**  
 Location: **27-98N-38W**  
 Township: **Westport**  
 Acres: **37.12**  
 Date: **9/29/2021**

**MIDWEST LAND** & REAL ESTATE, INC  
 712-262-3110 MANAGEMENT

Maps Provided By:  
  
 CUSTOMIZED ONLINE MAPPING  
 © AgriData, Inc. 2021 www.AgriDataInc.com



Area Symbol: IA059, Soil Area Version: 30

Code	Soil Description	Acres	Percent of field	CSR2 Legend	Non-Irr Class *c	CSR2**	CSR
282	Ransom silty clay loam, 1 to 3 percent slopes	18.44	49.7%		Iw	95	78
77B	Sac silty clay loam, loam substratum, 2 to 5 percent slopes	15.95	43.0%		Ile	95	76
1092	Gillett Grove silty clay loam, 0 to 2 percent slopes	2.73	7.4%		Ilw	94	79
<b>Weighted Average</b>						<b>94.9</b>	<b>77.2</b>

\*\*IA has updated the CSR values for each county to CSR2.  
 \*c: Using Capabilities Class Dominant Condition Aggregation Method  
 Soils data provided by USDA and NRCS.