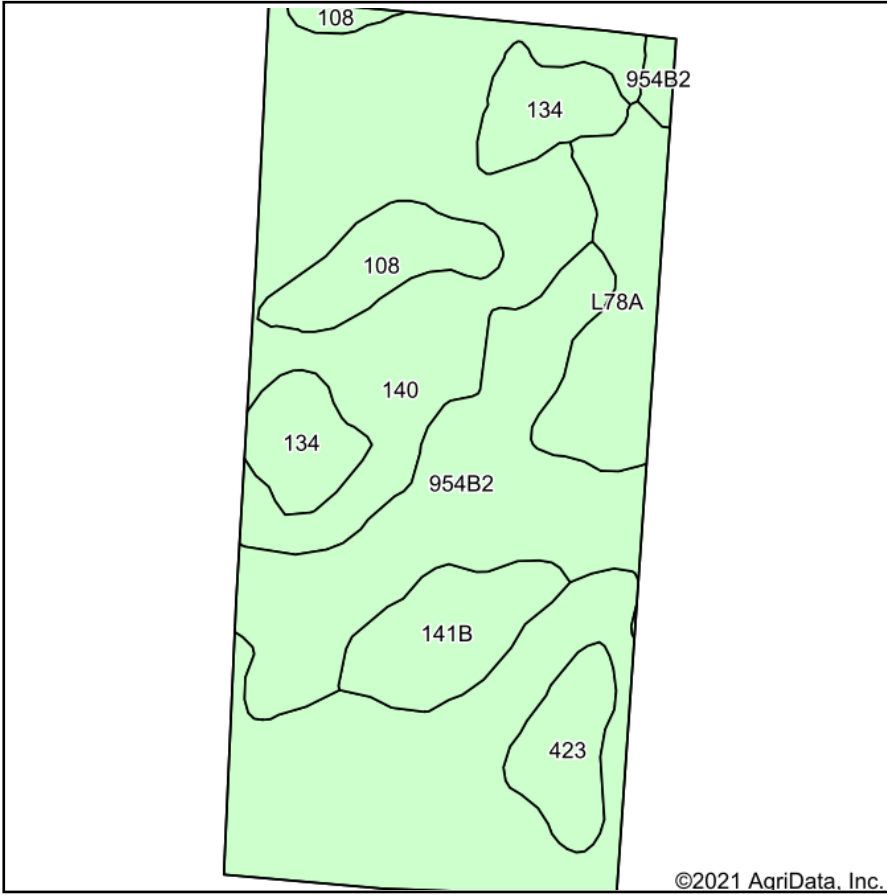
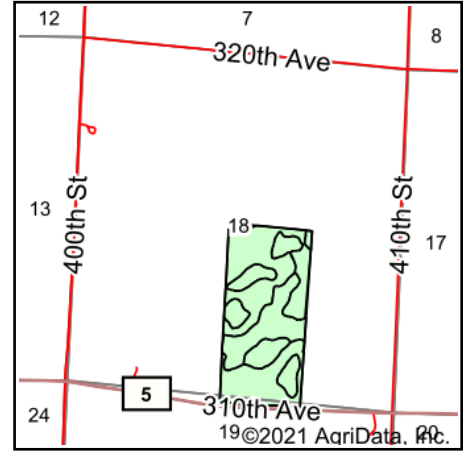


# Soils Map



Soils data provided by USDA and NRCS.



State: **Minnesota**  
 County: **Yellow Medicine**  
 Location: **18-116N-41W**  
 Township: **Lisbon**  
 Acres: **80.02**  
 Date: **10/11/2021**

**MIDWEST LAND** & REAL ESTATE, INC  
 712-262-3110 MANAGEMENT

Maps Provided By:  
  
 CUSTOMIZED ONLINE MAPPING  
 © AgriData, Inc. 2021 www.AgriDataInc.com



Area Symbol: MN173, Soil Area Version: 15

Code	Soil Description	Acres	Percent of field	Non-Irr Class *c	Productivity Index
140	Spicer silty clay loam, 0 to 2 percent slopes	40.42	50.5%	IIw	91
954B2	Amiret-Swanlake loams, 2 to 6 percent slopes	15.67	19.6%	IIe	92
L78A	Canisteo clay loam, 0 to 2 percent slopes	6.27	7.8%	IIw	93
134	Okoboji silty clay loam, 0 to 1 percent slopes	5.56	6.9%	IIIw	86
141B	Egeland loam, 2 to 6 percent slopes	4.70	5.9%	IIIe	68
108	McIntosh silt loam, 1 to 3 percent slopes	4.15	5.2%	IIs	90
423	Seaforth loam, 1 to 3 percent slopes	3.25	4.1%	IIs	95
<b>Weighted Average</b>				<b>2.13</b>	<b>89.8</b>

\*c: Using Capabilities Class Dominant Condition Aggregation Method  
 Soils data provided by USDA and NRCS.