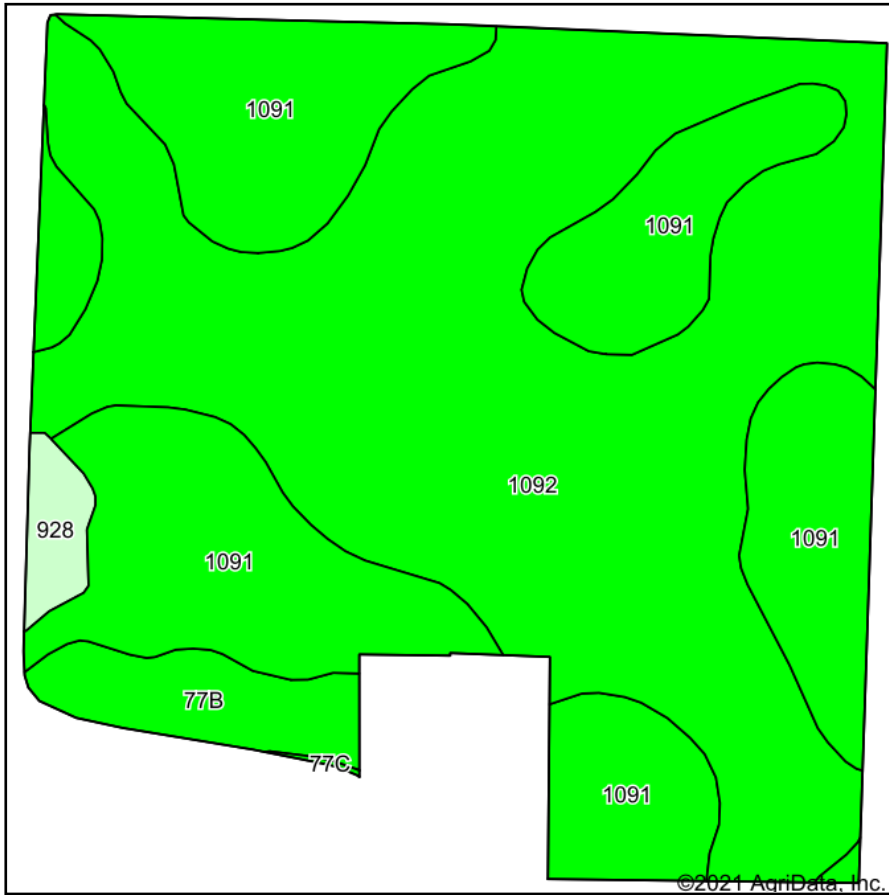
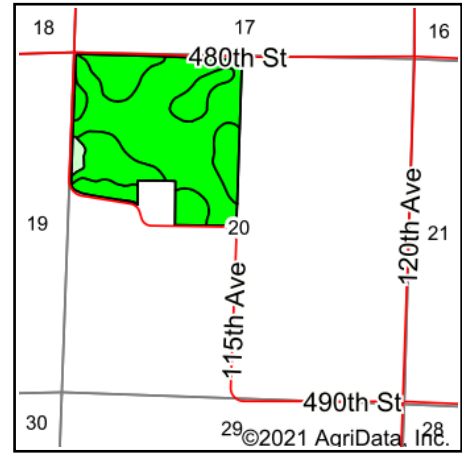


# Soils Map



Soils data provided by USDA and NRCS.



State: **Iowa**  
 County: **Clay**  
 Location: **20-94N-38W**  
 Township: **Peterson**  
 Acres: **133.05**  
 Date: **10/12/2021**

©2021 AgriData, Inc.

**MIDWEST LAND** & REAL ESTATE, INC  
 MANAGEMENT  
 712-262-3110  
 Maps Provided By: **surety**  
 CUSTOMIZED ONLINE MAPPING  
 © AgriData, Inc. 2021 www.AgriDataInc.com

Area Symbol: IA041, Soil Area Version: 30

Code	Soil Description	Acres	Percent of field	CSR2 Legend	Non-Irr Class *c	CSR2**	CSR	
1092	Gillett Grove silty clay loam, 0 to 2 percent slopes	74.40	55.9%		IIw	94	78	
1091	McCreath silty clay loam, 0 to 2 percent slopes	50.83	38.2%		Iw	98	83	
77B	Sac silty clay loam, loam substratum, 2 to 5 percent slopes	5.45	4.1%		Ile	95	71	
928	Annieville silty clay loam, 0 to 2 percent slopes	2.09	1.6%		Ie	100	78	
992	Gillett Grove silty clay loam, depressional, 0 to 1 percent slopes	0.20	0.2%		IIIw	77	58	
77C	Sac silty clay loam, loam substratum, 5 to 9 percent slopes	0.08	0.1%		IIIe	90	55	
<b>Weighted Average</b>						<b>1.60</b>	<b>95.6</b>	<b>79.6</b>

\*\*IA has updated the CSR values for each county to CSR2.

\*c: Using Capabilities Class Dominant Condition Aggregation Method

Soils data provided by USDA and NRCS.