

# Aerial Map



**MIDWEST LAND**  
712-262-3110 & REAL ESTATE, INC  
MANAGEMENT

Map Center: 42° 28' 54.98, -95° 16' 44.45



**36-89N-38W**  
Sac County  
Iowa

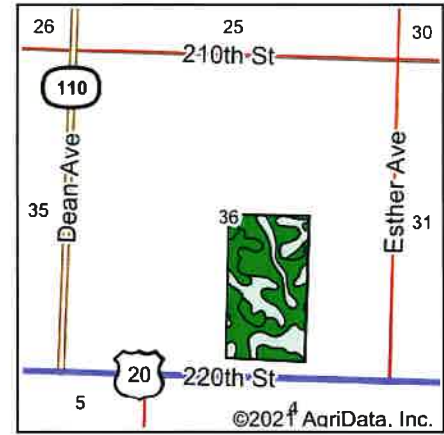


11/24/2021

Maps Provided By  
**surety**  
CUSTOMIZED ONLINE MAPPING  
© AgnData, Inc 2021 www.AgnDataInc.com

Field borders provided by Farm Service Agency as of 5/21/2008.

# Soils Map



State: Iowa  
 County: Sac  
 Location: 36-89N-38W  
 Township: Eureka  
 Acres: 70.69  
 Date: 11/24/2021

**MIDWEST LAND** & REAL ESTATE, INC  
 712-262-3110 MANAGEMENT

Maps Provided By **surety**  
 CUSTOMIZED ONLINE MAPPING  
 © AgriData, Inc. 2021 www.AgriDataInc.com

Soils data provided by USDA and NRCS.

Area Symbol: IA161, Soil Area Version: 29

Code	Soil Description	Acres	Percent of field	CSR2 Legend	Non-Irr Class *c	CSR2**	CSR	
310B	Galva silty clay loam, 2 to 5 percent slopes	36.09	51.1%		Ile	95	75	
91	Primghar silty clay loam, 0 to 2 percent slopes	13.87	19.6%		lw	100	84	
310	Galva silty clay loam, 0 to 2 percent slopes	11.00	15.6%		I	100	80	
31	Afton silty clay loam, 0 to 2 percent slopes, occasionally flooded	5.52	7.8%		llw	80	77	
310C2	Galva silty clay loam, 5 to 9 percent slopes, eroded	2.36	3.3%		llle	84	57	
78C2	Sac silty clay loam, 5 to 9 percent slopes, eroded	1.60	2.3%		llle	82	54	
92	Marcus silty clay loam, 0 to 2 percent slopes	0.25	0.4%		llw	94	80	
<b>Weighted Average</b>						<b>1.70</b>	<b>94.9</b>	<b>76.6</b>

\*\*IA has updated the CSR values for each county to CSR2.  
 \*c: Using Capabilities Class Dominant Condition Aggregation Method  
 Soils data provided by USDA and NRCS.