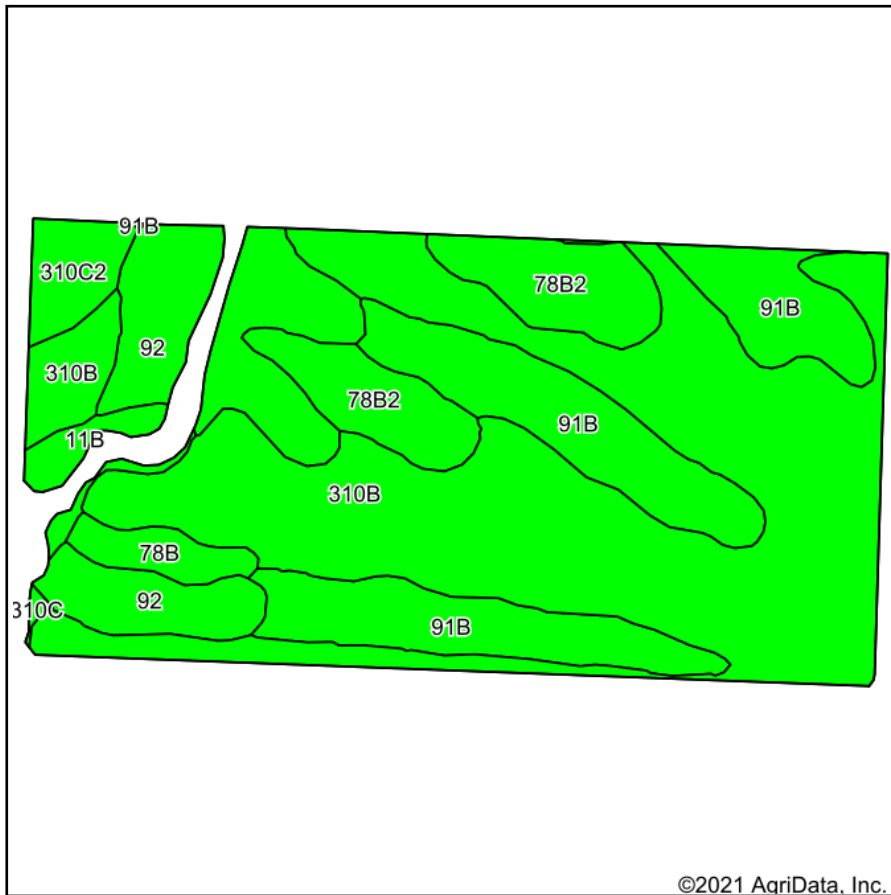
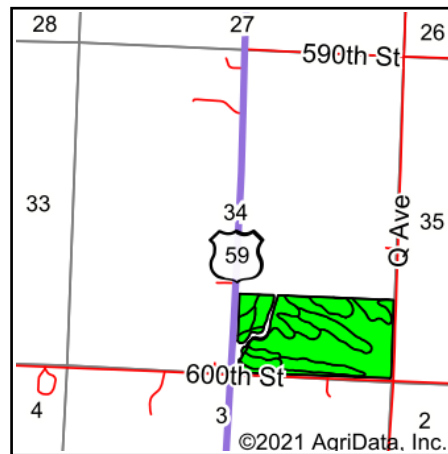


Soils Map



Soils data provided by USDA and NRCS.



State: **Iowa**
 County: **Cherokee**
 Location: **34-91N-40W**
 Township: **Pilot**
 Acres: **71.39**
 Date: **11/24/2021**

MIDWEST LAND & REAL ESTATE, INC
 712-262-3110 MANAGEMENT

Maps Provided By:

 CUSTOMIZED ONLINE MAPPING
 © AgriData, Inc. 2021 www.AgriDataInc.com



Area Symbol: IA035, Soil Area Version: 31

Code	Soil Description	Acres	Percent of field	CSR2 Legend	Non-Irr Class *c	CSR2**	CSR	
310B	Galva silty clay loam, 2 to 5 percent slopes	36.31	50.9%		Ile	95	71	
91B	Primghar silty clay loam, 2 to 5 percent slopes	14.24	19.9%		Ile	95	79	
92	Marcus silty clay loam, 0 to 2 percent slopes	9.73	13.6%		Ilw	94	76	
78B2	Sac silty clay loam, 2 to 5 percent slopes, eroded	6.34	8.9%		Ile	86	65	
310C2	Galva silty clay loam, 5 to 9 percent slopes, eroded	1.87	2.6%		IIIe	84	54	
78B	Sac silty clay loam, 2 to 5 percent slopes	1.44	2.0%		Ile	89	67	
11B	Colo-Judson silty clay loams, 0 to 5 percent slopes, occasionally flooded	1.34	1.9%		Ilw	80	59	
310C	Galva silty clay loam, 5 to 9 percent slopes	0.12	0.2%		IIIe	87	56	
Weighted Average						2.03	93.4	72

**IA has updated the CSR values for each county to CSR2.

*c: Using Capabilities Class Dominant Condition Aggregation Method

Soils data provided by USDA and NRCS.