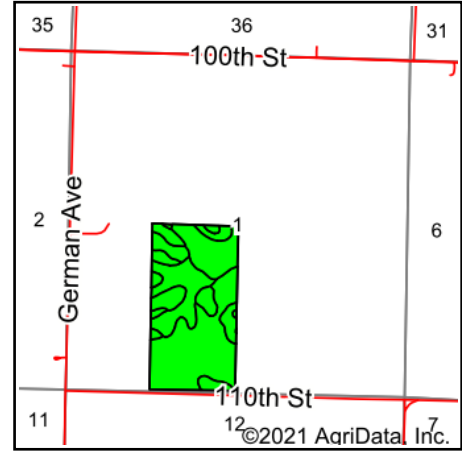
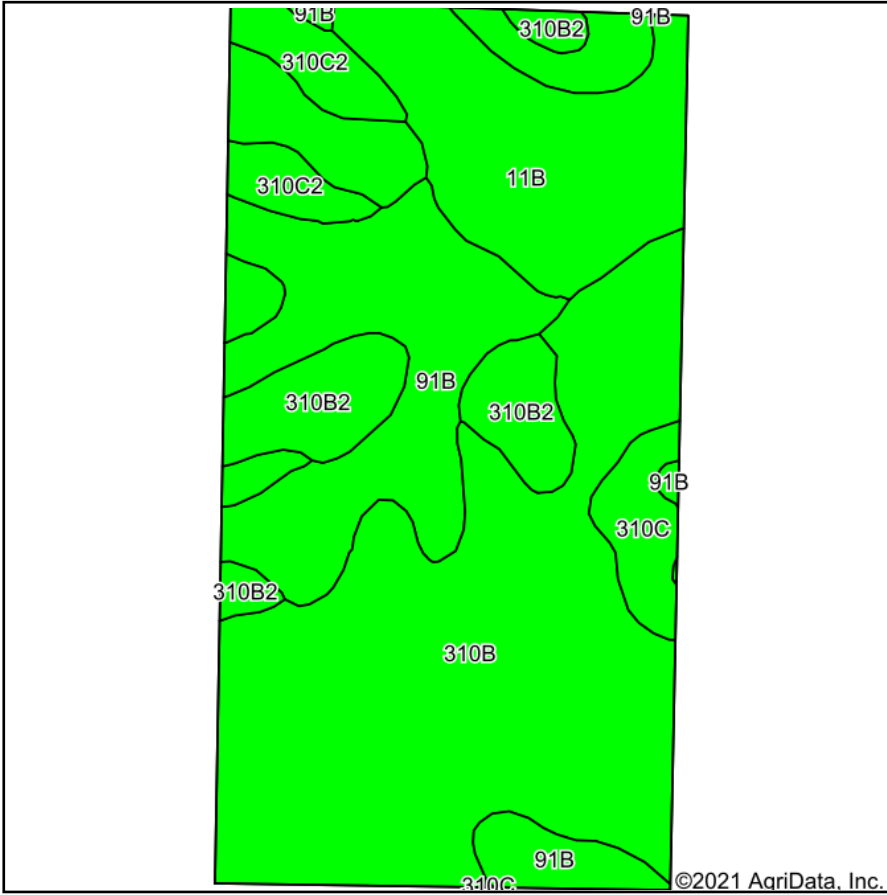


# Soils Map



State: **Iowa**  
 County: **Ida**  
 Location: **1-89N-40W**  
 Township: **Griggs**  
 Acres: **79.17**  
 Date: **11/24/2021**

& REAL ESTATE, INC  
**MIDWEST LAND**  
 712-262-3110 MANAGEMENT  
 Maps Provided By:  
  
 CUSTOMIZED ONLINE MAPPING  
 © AgriData, Inc. 2021 www.AgriDataInc.com



Area Symbol: IA093, Soil Area Version: 32

Code	Soil Description	Acres	Percent of field	CSR2 Legend	Non-Irr Class *c	CSR2**	CSR	
310B	Galva silty clay loam, 2 to 5 percent slopes	39.48	49.9%		Ile	95	73	
91B	Primghar silty clay loam, 2 to 5 percent slopes	15.63	19.7%		Ile	95	81	
11B	Colo-Judson silty clay loams, 0 to 5 percent slopes, occasionally flooded	11.67	14.7%		IIw	80	62	
310B2	Galva silty clay loam, 2 to 5 percent slopes, eroded	6.52	8.2%		Ile	90	71	
310C2	Galva silty clay loam, 5 to 9 percent slopes, eroded	3.48	4.4%		IIIe	84	55	
310C	Galva silty clay loam, 5 to 9 percent slopes	2.39	3.0%		IIIe	87	57	
<b>Weighted Average</b>						<b>2.07</b>	<b>91.7</b>	<b>71.5</b>

\*\*IA has updated the CSR values for each county to CSR2.

\*c: Using Capabilities Class Dominant Condition Aggregation Method  
 Soils data provided by USDA and NRCS.