

Form: FSA-156EZ

See Page 2 for non-discriminatory Statements.

Abbreviated 156 Farm Record

Operator Name :
Farms Associated with Operator :
CRP Contract Number(s) : None
Recon ID : None
Transferred From : None
ARCPLC G//F Eligibility : Eligible

Farm Land Data

Farmland	Cropland	DCP Cropland	WBP	WRP	CRP	GRP	Sugarcane	Farm Status	Number Of Tracts
156.06	138.83	138.83	0.00	0.00	0.00	0.00	0.00	Active	1
State Conservation	Other Conservation	Effective DCP Cropland	Double Cropped		MPL	Acre Election	EWP	DCP Ag.Rel. Activity	Broken From Native Sod
0.00	0.00	138.83	0.00		0.00		0.00	0.00	0.00

Crop Election Choice

ARC Individual	ARC County	Price Loss Coverage
None	CORN, SOYBN	None

DCP Crop Data

Crop Name	Base Acres	CCC-505 CRP Reduction Acres	PLC Yield	HIP
Corn	62.20	0.00	156	0
Soybeans	37.60	0.00	49	
TOTAL	99.80	0.00		

NOTES

--

Tract Number : 1717
Description : SE4 S15/T14
FSA Physical Location : MINNESOTA/YELLOW MEDICINE
ANSI Physical Location : MINNESOTA/YELLOW MEDICINE
BIA Unit Range Number :
HEL Status : NHEL: No agricultural commodity planted on undetermined fields
Wetland Status : Tract does not contain a wetland
WL Violations : None
Owners : JOYCE HEST, THOMAS MAERTENS, DEAN MAERTENS, BRIAN C MAERTENS, SHARON L JOHNSON, JANET RAE BENDIX
Other Producers : None
Recon ID : None

Tract Land Data

Farm Land	Cropland	DCP Cropland	WBP	WRP	CRP	GRP	Sugarcane
156.06	138.83	138.83	0.00	0.00	0.00	0.00	0.00
State Conservation	Other Conservation	Effective DCP Cropland	Double Cropped	MPL	EWP	DCP Ag. Rel Activity	Broken From Native Sod
0.00	0.00	138.83	0.00	0.00	0.00	0.00	0.00

Abbreviated 156 Farm Record

DCP Crop Data

Tract 1717 Continued ...

Crop Name	Base Acres	CCC-505 CRP Reduction Acres	PLC Yield
Corn	62.20	0.00	156
Soybeans	37.60	0.00	49
TOTAL	99.80	0.00	

NOTES

In accordance with Federal civil rights law and U.S. Department of Agriculture (USDA) civil rights regulations and policies, the USDA, its Agencies, offices, and employees, and institutions participating in or administering USDA programs are prohibited from discriminating based on race, color, national origin, religion, sex, gender identity (including gender expression), sexual orientation, disability, age, marital status, family/parental status, income derived from a public assistance program, political beliefs, or reprisal or retaliation for prior civil rights activity, in any program or activity conducted or funded by USDA (not all bases apply to all programs). Remedies and complaint filing deadlines vary by program or incident.

Persons with disabilities who require alternative means of communication for program information (e.g., Braille, large print, audiotape, American Sign Language, etc.) should contact the responsible Agency or USDA's TARGET Center at (202) 720-2600 (voice and TTY) or contact USDA through the Federal Relay Service at (800) 877-8339. Additionally, program information may be made available in languages other than English.

To file a program discrimination complaint, complete the USDA Program Discrimination Complaint Form, AD-3027, found online at http://www.ascr.usda.gov/complaint_filing_cust.html and at any USDA office or write a letter addressed to USDA and provide in the letter all of the information requested in the form. To request a copy of the complaint form, call (866) 632-9992. Submit your completed form or letter to USDA by: (1) mail: U.S. Department of Agriculture Office of the Assistant Secretary for Civil Rights 1400 Independence Avenue, SW Washington, D.C. 20250-9410; (2) fax: (202) 690-7442; or (3) e-mail: program.intake@usda.gov. USDA is an equal opportunity provider, employer, and lender.

2022 Program Year

Map Created April 04, 2022



Unless otherwise noted:
Shares are 100% operator
Crops are non-irrigated
Corn = yellow for grain

Soybeans = common soybeans for grain
Wheat = HRS, HRW = Grain
Sunflower = Oil, Non-Oil = Grain
Oats and Barley = Spring for grain
Rye = for grain
Peas = process
Alfalfa, Mixed Forage AGM, GMA, IGS = for forag
Beans = Dry Edible
NAG = for GZ
Canola = Spring for seed

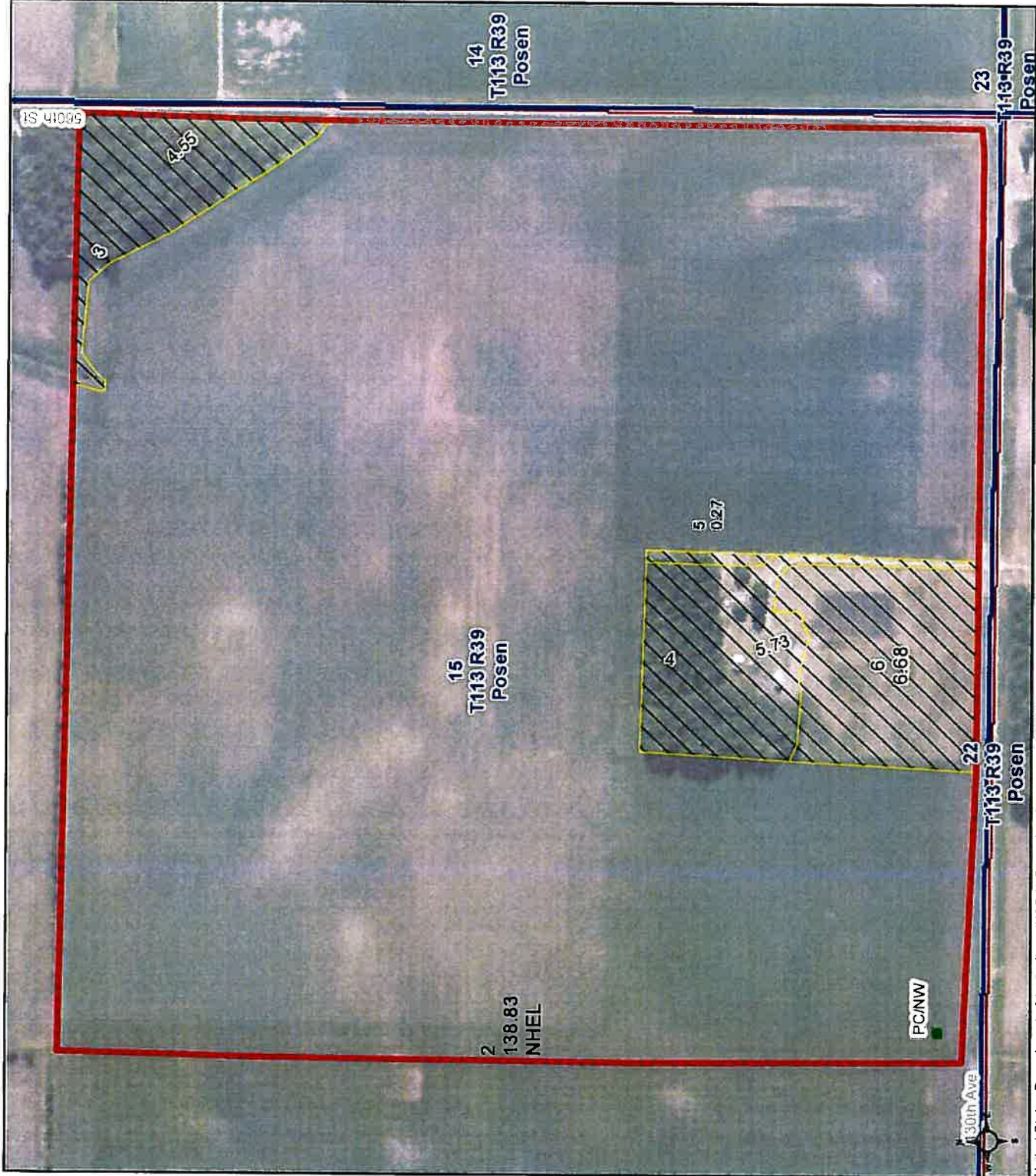
Common Land Unit

- Non-Cropland
- Cropland
- Tract Boundary

Wetland Determination Identifiers

- Restricted Use
- Limited Restrictions
- Exempt from Conservation
- Compliance Provisions

Tract Cropland Total: 138.83 acres



United States Department of Agriculture (USDA) Farm Service Agency (FSA) maps are for FSA Program administration only. This map does not represent a legal survey or reflect actual ownership. The producer accepts the data 'as is' and assumes all risks associated with its use. USDA-FSA assumes no responsibility for actual or consequential damage incurred as a result of any user's reliance on this data outside FSA Programs. Wetland identifiers do not represent the size, shape, or specific determination of the area. Refer to your original determination (CPA-026 and attached maps) for exact boundaries and determinations or contact USDA Natural Resources Conservation Service (NRCS). This map displays the 2021 NAIP imagery.



HIGHLY ERODIBLE LAND AND WETLAND CONSERVATION DETERMINATION

Request Date: 11/22/2011 County: Yellow Medicine

Agency or Person Requesting Determination: Operator Tract No: 1717 Farm No:

Section I - Highly Erodible Land

Is a soil survey now available for making a highly erodible land determination? Are there highly erodible soil map units on this farm?

Fields in this section have undergone a determination of whether they are highly erodible land (HEL) or not; fields for which an HEL Determination has not been completed are not listed. In order to be eligible for USDA benefits, a person must be using an approved conservation system on all HEL.

Table with 5 columns: Field(s), HEL(Y/N), Sodbust (Y/N), Acres, Determination Date. Content: Refer to the Previous HEL determination available on file from your FSA office

Section II - Wetlands

Are there hydric soils on this farm? Yes

Fields in this section have had wetland determinations completed. See the Definition of Wetland Label Codes for additional information regarding allowable activities under the wetland conservation provisions of the Food Security Act and/or when wetland determinations are necessary to determine USDA program eligibility.

Table with 6 columns: Field(s), Wetland Label, Occurrence Year, Acres, Determination Date, Certification Date. Row 1: 2, PC W, 138.7, 11/22/2011, 12/25/2011

The wetland determination was completed in the Office It was delivered by: Mail On: 11/22/2011

Remarks:

I certify that the above determinations are correct and were conducted in accordance with policies and procedures contained in the National Food Security Act Manual.

Signature Designated Conservationist: Cory Walker Date: 11/22/2011

Certified Wetland Determination

Tract: 1717
Date: 11/22/2011

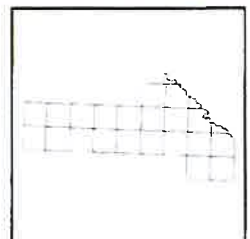
Agency: NRCS
Field Office: Yellow Medicine
District: Yellow Medicine SWCD



Missing Label	CME	MWM
PC/NW	CPD	NW
W	CW	NW/NAD
FW	CWTE	PC
FWP	MIW	TP
AW	MW	WX
	Townships	
	Sections	



1:8,750



Maps are for graphical purposes only. They do not represent a legal survey. While every effort has been made to ensure that these data are accurate and reliable within the limits of the current state of the art, NRCS cannot assume liability for any damages caused by any errors or omissions in the data, nor as a result of the failure of the data to function on a particular system. NRCS makes no warranty, expressed or implied, nor does the fact of distribution constitute such a warranty.

***DEFINITIONS OF WETLAND LABEL CODES**

AW	Artificial Wetland. An area that is artificial or irrigation induced wetland. These wetlands are not subject to the wetland conservation provision.
CME	An area that receives a Categorical Minimal Effect determination.
CPD	Corps Permit Decision. Corps of Engineers permit decisions regarding section 404 of the Clean Water Act will be relied upon to satisfy the wetland conservation provisions of the Food Security Act of 1985, as amended.
CW	Converted Wetlands. An area converted between December 23, 1985 and November 28, 1990. IN any year that an agricultural commodity is planted on these converted wetlands, you will ineligible for USDA benefits.
**CW+year	An area converted after November 28, 1990. You will be ineligible for USDA program benefits until this wetland is restored.
CWTE	Converted Wetland Technical Error. An area converted or commenced based on an incorrect NRCS determination or misinformation from a NRCS or FSA employee.
FW	Farmed Wetland. An area that is farmed wetland; was manipulated and planted before December 23, 1985, but still meets wetland criteria. These may be farmed and maintained in the same manner as long as they are not abandoned.
FWP	Farmed Wetlands Pasture. An area that is pasture or hayland, manipulated before December 23, 1985 but still meets wetland criteria. These may be farmed and maintained in the same manner as long as they are not abandoned.
MIW	Mitigation Wetlands. Wetlands on which a person is actively mitigating a frequently cropped area or a wetland converted between December 23, 1985 and November 28, 1990. A converted wetland, farmed wetland, or farmed wetland pasture on which functions and values were lost are compensated for through wetland restoration, enhancement or creation.
MW	Minimal effect Wetland. An area determined to be minimal effect. These wetlands are to be farmed according to the minimal-effect agreement signed at the time the minimal-effect determination was made,
MWM	An area determined to be minimal effect with mitigation.
NW	Non-Wetland. An area that does not contain a wetland.
NW/NAD	An area determined to be a non-wetland resulting from a decision from the National Appeals Division.
PC	Prior Converted cropland, which was drained filled, or manipulated before December 23, 1985; was cropped prior to December 23, 1985; was not abandoned; and does not meet FW criteria. These are not subject to the wetland conservation provision unless the area reverts to wetland as a result of abandonment.
PC/NW	An area that contains both PC and NW.
TP	Third Party Exemption.
W	Wetlands. An area meeting wetland criteria, including wetland farmed under natural conditions. If you plan to clear, drain, fill, level or manipulate these areas, contact NRCS and the Army Corp of Engineers prior to any such activity.
WX	A wetland area that has been manipulated after December 23, 1985, but was not, for the purpose of making production possible and production was not made possible. These include wetlands manipulated by drainage maintenance agreements.