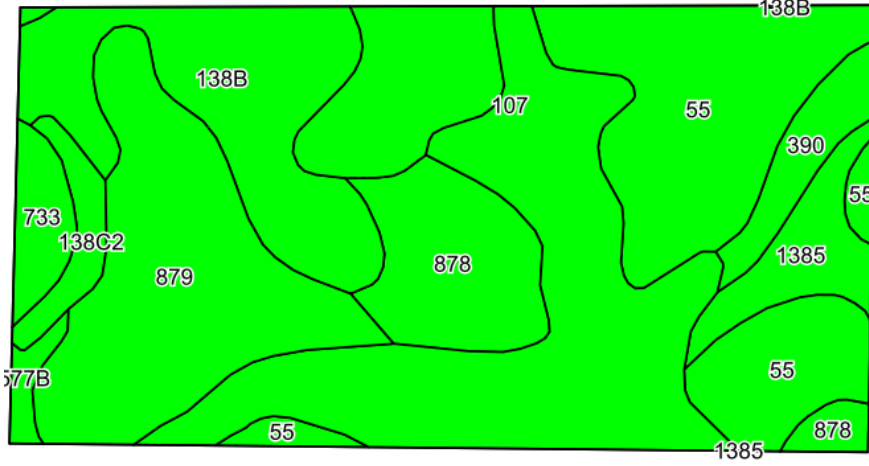
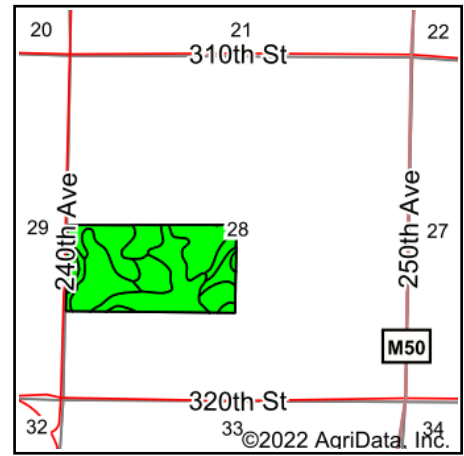


Soils Map



©2022 AgriData, Inc.

Soils data provided by USDA and NRCS.



State: **Iowa**
 County: **Clay**
 Location: **28-97N-36W**
 Township: **Meadow**
 Acres: **80**
 Date: **4/28/2022**

MIDWEST LAND & REAL ESTATE, INC.
 712-262-3110 MANAGEMENT
 Maps Provided By:
surety
 CUSTOMIZED ONLINE MAPPING
 © AgriData, Inc. 2021 www.AgriDataInc.com



Area Symbol: IA041, Soil Area Version: 31

Code	Soil Description	Acres	Percent of field	CSR2 Legend	CSR2**	CSR
55	Nicollet clay loam, 1 to 3 percent slopes	21.29	26.6%		89	82
107	Webster clay loam, 0 to 2 percent slopes	18.32	22.9%		86	77
879	Fostoria loam, 1 to 3 percent slopes	13.43	16.8%		91	72
138B	Clarion loam, 2 to 6 percent slopes	10.48	13.1%		89	74
878	Ocheyedan loam, 0 to 2 percent slopes	6.67	8.3%		94	69
1385	Ocheda silty clay loam, 1 to 3 percent slopes	3.15	3.9%		76	73
390	Waldorf silty clay loam, 0 to 2 percent slopes	2.40	3.0%		69	63
733	Calco silty clay loam, 0 to 2 percent slopes, occasionally flooded	1.95	2.4%		79	68
138C2	Clarion loam, 6 to 10 percent slopes, moderately eroded	1.61	2.0%		83	59
577B	Everly clay loam, 2 to 5 percent slopes	0.70	0.9%		88	68
Weighted Average					87.6	75.2

**IA has updated the CSR values for each county to CSR2.
 Soils data provided by USDA and NRCS.