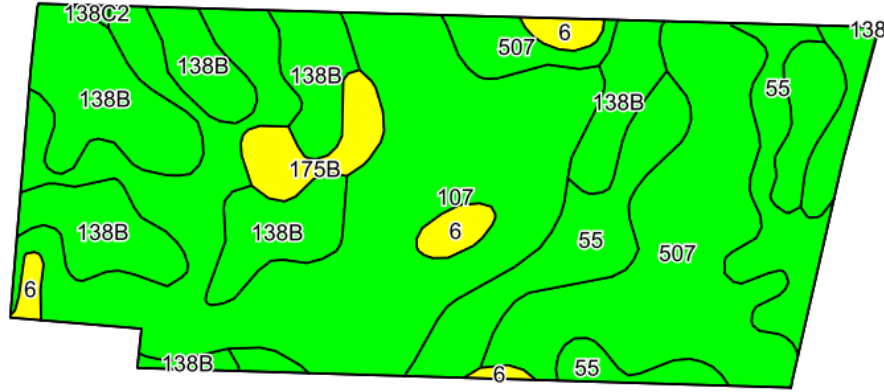
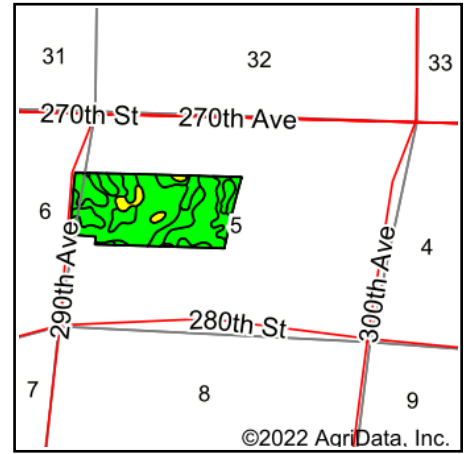


Soils Map



©2022 AgriData, Inc.

Soils data provided by USDA and NRCS.



©2022 AgriData, Inc.

State: **Iowa**
 County: **Clay**
 Location: **5-97N-35W**
 Township: **Lake**
 Acres: **70.75**
 Date: **8/10/2022**

MIDWEST LAND & REAL ESTATE, INC.
 712-262-3110 MANAGEMENT

Maps Provided By:



© AgriData, Inc. 2021

www.AgriDataInc.com



Area Symbol: IA041, Soil Area Version: 31

Code	Soil Description	Acres	Percent of field	CSR2 Legend	CSR2**	CSR
107	Webster clay loam, 0 to 2 percent slopes	25.43	35.9%		86	77
138B	Clarion loam, 2 to 6 percent slopes	15.52	21.9%		89	74
507	Canisteo clay loam, 0 to 2 percent slopes	14.92	21.1%		84	73
55	Nicollet clay loam, 1 to 3 percent slopes	9.40	13.3%		89	82
175B	Dickinson fine sandy loam, 2 to 5 percent slopes	1.97	2.8%		47	36
6	Okoboji silty clay loam, 0 to 1 percent slopes	1.72	2.4%		59	55
638C2	Clarion-Storden complex, 6 to 10 percent slopes, moderately eroded	1.69	2.4%		75	55
138C2	Clarion loam, 6 to 10 percent slopes, moderately eroded	0.10	0.1%		83	59
Weighted Average					84.6	73.9

**IA has updated the CSR values for each county to CSR2.
 Soils data provided by USDA and NRCS.