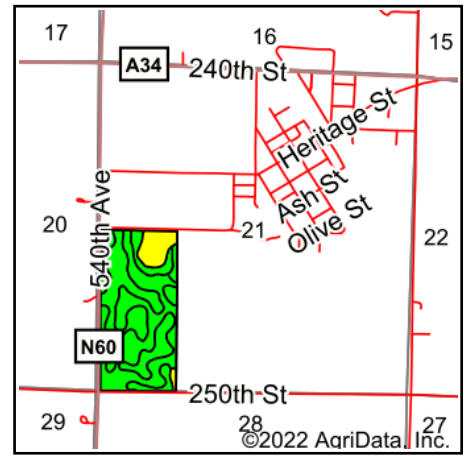
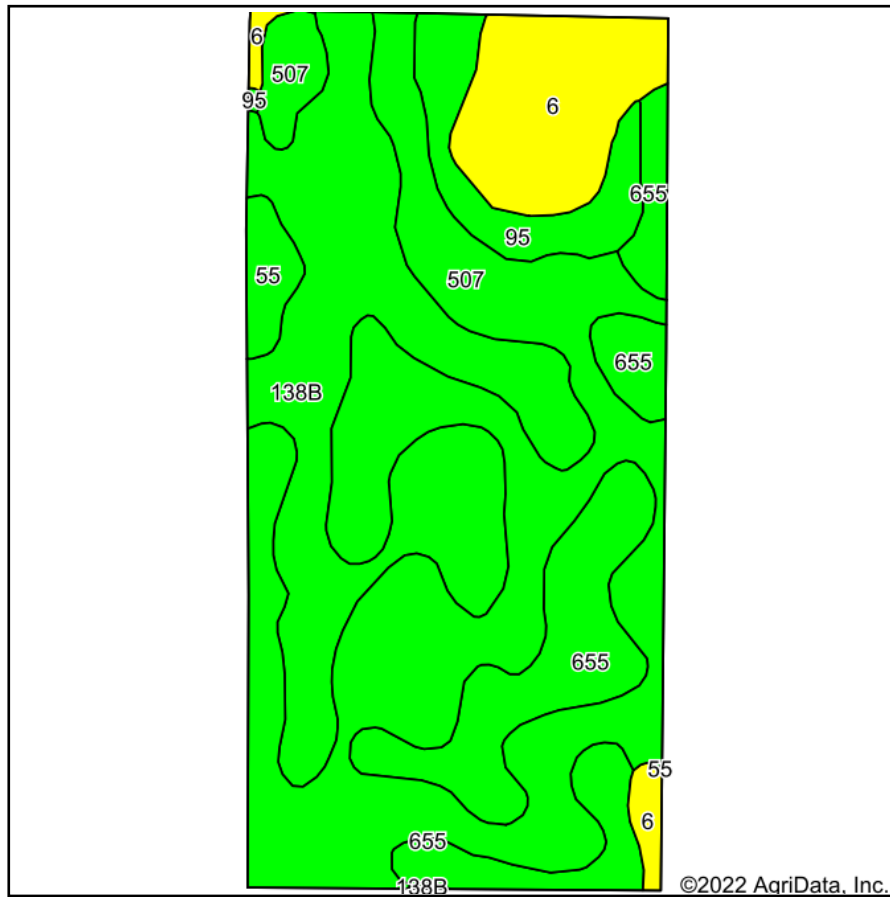


Soils Map



State: **Iowa**
 County: **Emmet**
 Location: **21-98N-31W**
 Township: **Denmark**
 Acres: **77.54**
 Date: **8/11/2022**

MIDWEST LAND & REAL ESTATE, INC.
 712-262-3110 MANAGEMENT
 Maps Provided By:
surety
 CUSTOMIZED ONLINE MAPPING
 © AgriData, Inc. 2021 www.AgriDataInc.com



Area Symbol: IA063, Soil Area Version: 31

Code	Soil Description	Acres	Percent of field	CSR2 Legend	CSR2**	CSR
507	Canisteo clay loam, 0 to 2 percent slopes	32.43	41.8%		84	73
138B	Clarion loam, 2 to 6 percent slopes	19.42	25.0%		89	74
655	Crippin loam, 1 to 3 percent slopes	12.35	15.9%		91	77
6	Okoboji silty clay loam, 0 to 1 percent slopes	7.79	10.0%		59	53
95	Harps clay loam, 0 to 2 percent slopes	4.17	5.4%		72	57
55	Nicollet clay loam, 1 to 3 percent slopes	1.38	1.8%		89	82
Weighted Average					83.3	71.2

**IA has updated the CSR values for each county to CSR2.
 Soils data provided by USDA and NRCS.