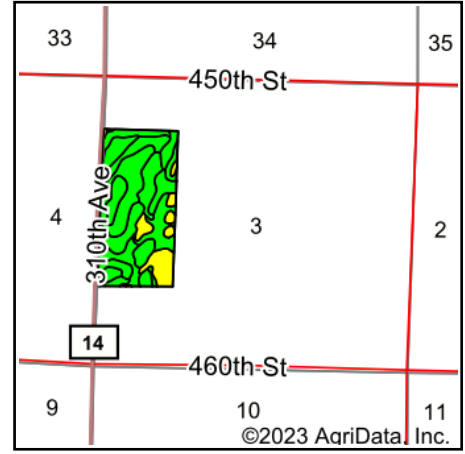
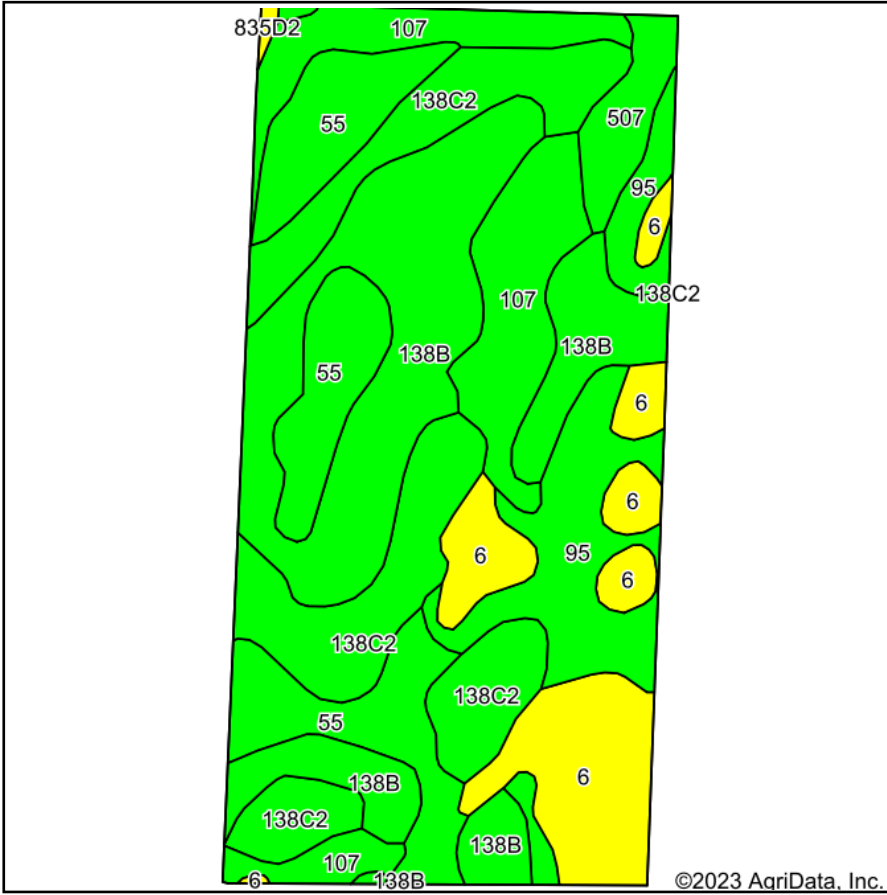


Soils Map



State: **Iowa**
 County: **Clay**
 Location: **3-94N-35W**
 Township: **Garfield**
 Acres: **76.8**
 Date: **8/9/2023**

& REAL ESTATE, INC
MIDWEST LAND
 712-262-3110 MANAGEMENT
 Maps Provided By:

 CUSTOMIZED ONLINE MAPPING
 © AgriData, Inc. 2023 www.AgriDataInc.com



Soils data provided by USDA and NRCS.

Area Symbol: IA041, Soil Area Version: 32

Code	Soil Description	Acres	Percent of field	CSR2 Legend	Non-Irr Class *c	CSR2**	CSR	
138B	Clarion loam, 2 to 6 percent slopes	19.81	25.8%		Ile	89	74	
138C2	Clarion loam, 6 to 10 percent slopes, moderately eroded	14.74	19.2%		IIIle	83	59	
55	Nicollet clay loam, 1 to 3 percent slopes	11.87	15.5%		Iw	89	82	
107	Webster clay loam, 0 to 2 percent slopes	10.08	13.1%		IIw	86	77	
6	Okoboji silty clay loam, 0 to 1 percent slopes	9.65	12.6%		IIIw	59	55	
95	Harps clay loam, 0 to 2 percent slopes	8.27	10.8%		IIw	72	57	
507	Canisteo clay loam, 0 to 2 percent slopes	2.23	2.9%		IIw	84	73	
835D2	Omsrud-Storden complex, 10 to 16 percent slopes, moderately eroded	0.15	0.2%		IVe	53	46	
Weighted Average						2.17	81.6	68.4

**IA has updated the CSR values for each county to CSR2.

*c: Using Capabilities Class Dominant Condition Aggregation Method

Soils data provided by USDA and NRCS.