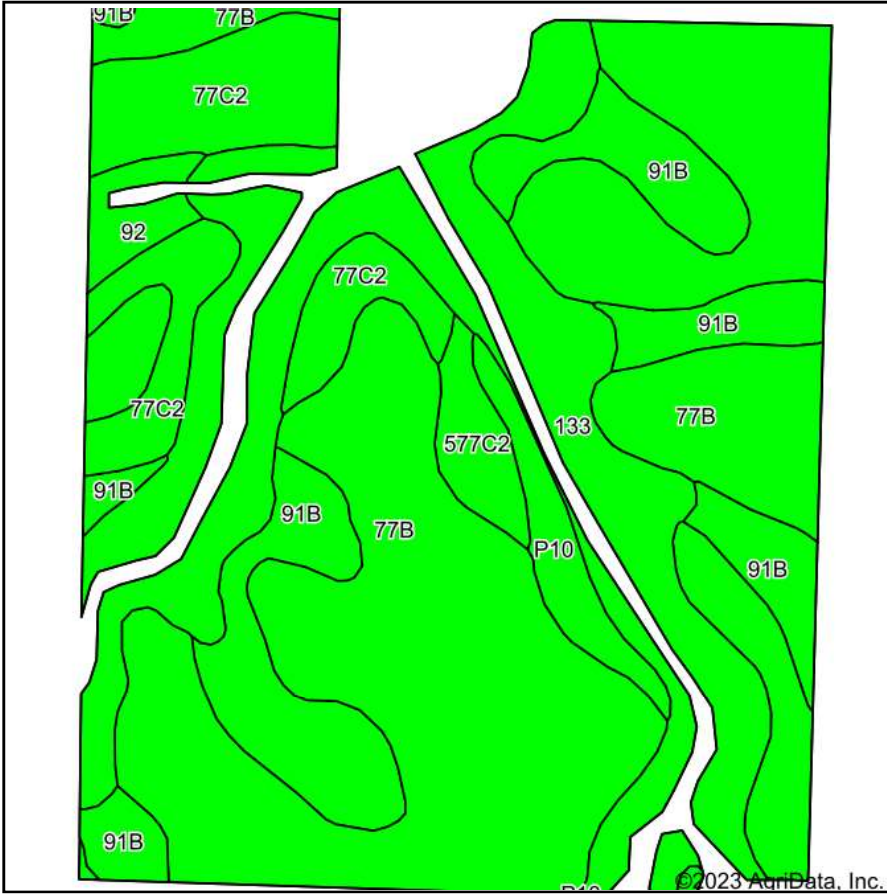
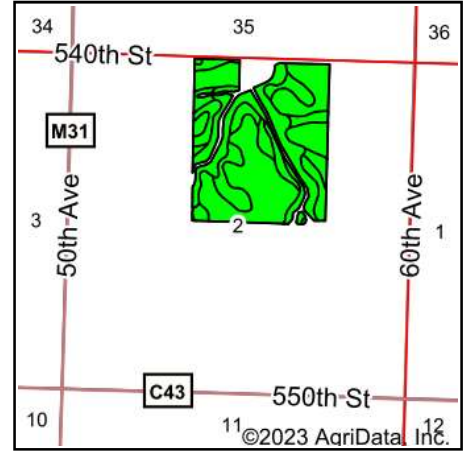


Soils Map



Soils data provided by USDA and NRCS.



State: **Iowa**
 County: **Buena Vista**
 Location: **2-91N-38W**
 Township: **Nokomis**
 Acres: **107.17**
 Date: **11/8/2023**

& REAL ESTATE, INC
MIDWEST LAND
 712-262-3110 MANAGEMENT
 Maps Provided By:

 CUSTOMIZED ONLINE MAPPING
 © AgriData, Inc. 2023 www.AgriDataInc.com



Area Symbol: IA021, Soil Area Version: 29

| Code | Soil Description | Acres | Percent of field | CSR2 Legend | CSR2** | CSR |
|-------------------------|---|-------|------------------|-------------|-----------|-----------|
| 77B | Sac silty clay loam, loam substratum, 2 to 5 percent slopes | 51.23 | 47.8% | | 95 | 72 |
| 133 | Colo silty clay loam, deep loess, 0 to 2 percent slopes, occasionally flooded | 23.62 | 22.0% | | 78 | 76 |
| 91B | Primghar silty clay loam, 2 to 5 percent slopes | 15.51 | 14.5% | | 95 | 81 |
| 77C2 | Sac silty clay loam, loam substratum, 5 to 9 percent slopes, eroded | 10.61 | 9.9% | | 88 | 54 |
| P10 | Afton silty clay loam, Sheldon creek formation, 0 to 2 percent slopes, occasionally flooded | 2.58 | 2.4% | | 82 | |
| 577C2 | Everly clay loam, 5 to 9 percent slopes, moderately eroded | 2.07 | 1.9% | | 82 | 51 |
| 92 | Marcus silty clay loam, 0 to 2 percent slopes | 1.55 | 1.4% | | 94 | 79 |
| Weighted Average | | | | | 90 | *- |

**IA has updated the CSR values for each county to CSR2.

*- CSR weighted average cannot be calculated on the current soils data, use prior data version for csr values.

Soils data provided by USDA and NRCS.