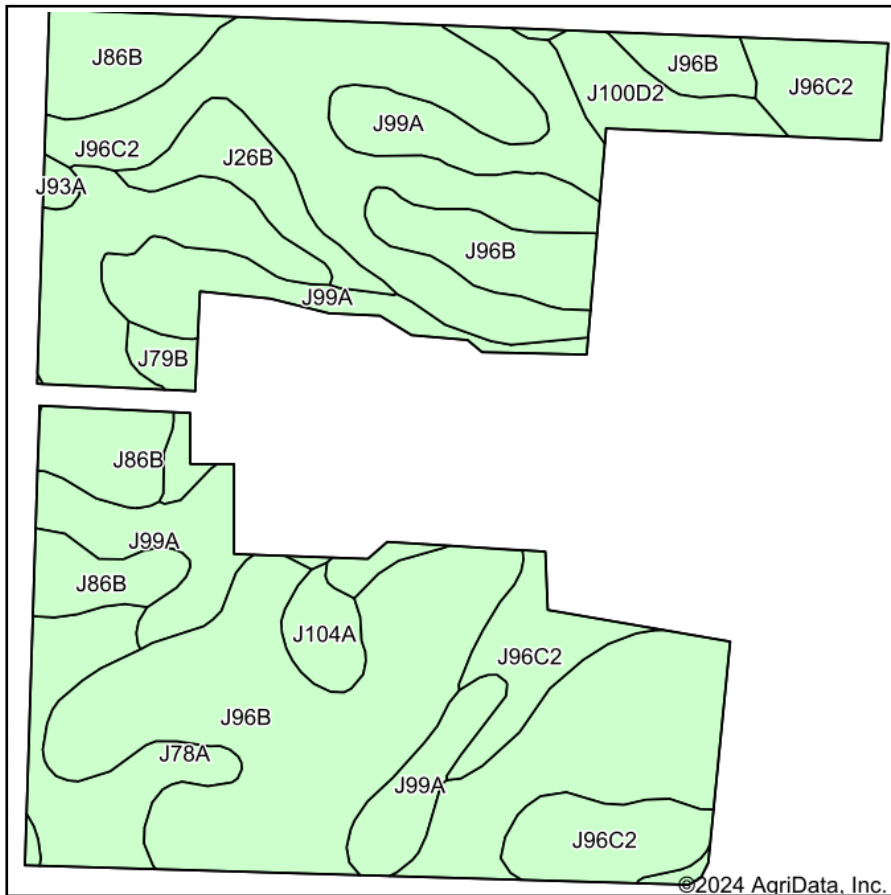
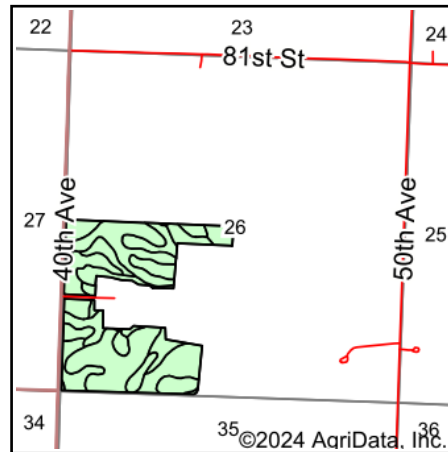


Soils Map



Soils data provided by USDA and NRCS.



State: **Minnesota**
 County: **Murray**
 Location: **26-106N-43W**
 Township: **Chanarambie**
 Acres: **97.86**
 Date: **7/15/2024**

MIDWEST LAND & REAL ESTATE, INC
 712-262-3110 MANAGEMENT

Maps Provided By:

 CUSTOMIZED ONLINE MAPPING
 © AgriData, Inc. 2023 www.AgriDataInc.com



Area Symbol: MN101, Soil Area Version: 23

Code	Soil Description	Acres	Percent of field	Productivity Index
J96B	Barnes, occasional saturation-Buse complex, 3 to 6 percent slopes	31.44	32.0%	88
J96C2	Barnes-Buse complex, 6 to 12 percent slopes, moderately eroded	24.15	24.7%	80
J99A	Lakepark clay loam, 0 to 3 percent slopes, overwash	14.34	14.7%	98
J86B	Vienna silty clay loam, 3 to 6 percent slopes	13.66	14.0%	90
J78A	Lismore silty clay loam, 1 to 3 percent slopes	5.25	5.4%	98
J26B	Darnen loam, 2 to 6 percent slopes	2.95	3.0%	99
J100D2	Buse, eroded-Wilno complex, 12 to 18 percent slopes	2.78	2.8%	64
J104A	Svea loam, 1 to 3 percent slopes	1.64	1.7%	99
J79B	Vienna-Brookings complex, 1 to 6 percent slopes	1.30	1.3%	94
J93A	Hidewood-Badger complex, 0 to 2 percent slopes	0.35	0.4%	92
Weighted Average				88.2

Soils data provided by USDA and NRCS.