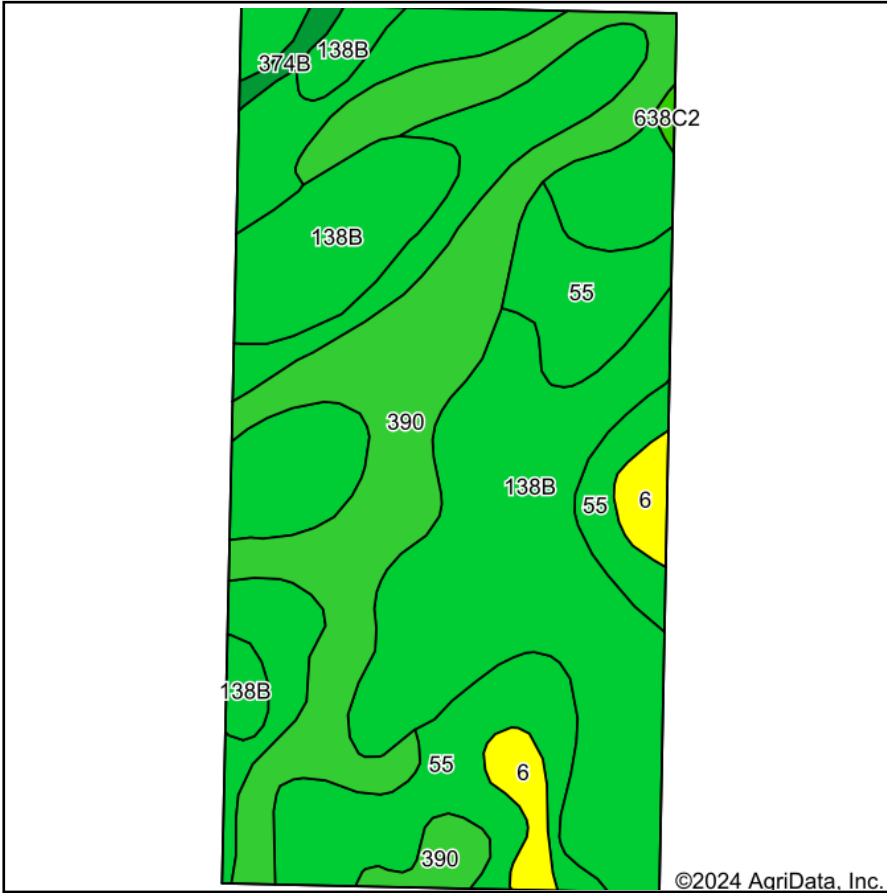
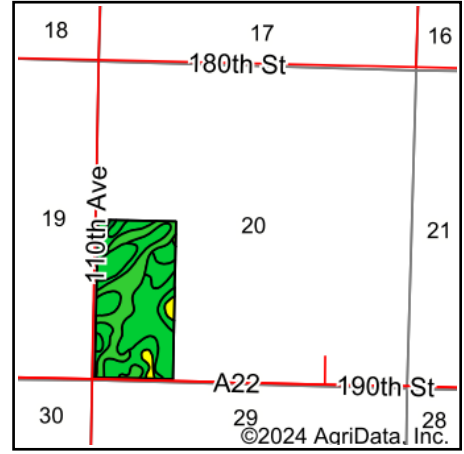


Soils Map



Soils data provided by USDA and NRCS.

©2024 AgriData, Inc.



State: **Iowa**
 County: **Dickinson**
 Location: **20-99N-38W**
 Township: **Excelsior**
 Acres: **78.39**
 Date: **9/3/2024**







MIDWEST LAND & REAL ESTATE, INC
 712-262-3110 MANAGEMENT

Maps Provided By:

 CUSTOMIZED ONLINE MAPPING
 © AgriData, Inc. 2023 www.AgriDataInc.com



Area Symbol: IA059, Soil Area Version: 33

Code	Soil Description	Acres	Percent of field	CSR2 Legend	Non-Irr Class *c	CSR2**	CSR	
138B	Clarion loam, 2 to 6 percent slopes	28.31	36.2%		Ile	89	73	
55	Nicollet clay loam, 1 to 3 percent slopes	27.86	35.5%		Iw	89	73	
390	Waldorf silty clay loam, 0 to 2 percent slopes	19.18	24.5%		IIw	69	59	
6	Okoboji silty clay loam, 0 to 1 percent slopes	2.31	2.9%		IIIw	59	43	
374B	Okabena silty clay loam, 1 to 5 percent slopes	0.57	0.7%		Iw	91	73	
638C2	Clarion-Storden complex, 6 to 10 percent slopes, moderately eroded	0.16	0.2%		IIIle	75	52	
Weighted Average						1.67	83.2	68.6

**IA has updated the CSR values for each county to CSR2.

*c: Using Capabilities Class Dominant Condition Aggregation Method

Soils data provided by USDA and NRCS.